



# Spare Parts Catalog

T 7334

Material number: 2094.011.003

Current date: 19.10.2020

ZF Friedrichshafen AG  
Hauptverwaltung  
80038 Friedrichshafen  
Deutschland

Telefon: +49 7541 77-0

Telefax: +49 7541 77-908000

[www.zf.com](http://www.zf.com)

zuständiges Werk:  
Passau

# Notes relating to the spare parts catalog

## Setup of the spare parts catalog

- Cover sheet
- Technical Cover (only in SDM print)
- Overview of figures
- Figure
- Associated parts list
- Next figure
- Associated parts list
- ...

## Figure and parts list



## Overview of figures

Bildtafel Figure	Sachnummer Product number	Benennung (Description)	Technische Info Technical info	Description (Benennung)	Menge Quantity	Einheit Unit
068.08.17	1316.170.001	AUSLEGER	WL	SHIFT TURRET	1	Stk
068.08.06	1316.170.031	DECKEL	WL*H-H *VM	COVER	1	Stk
068.08.14	1316.170.808	DECKEL	WL*AUSL+GEH*H-H*HF160N	COVER	1	Stk
08	1316.170.441	ANSCHLUSSTEILE	WL*NG-VORB*RG-SCHL*168N *BAJONETT	CONNECTING PARTS	1	Stk

The "gap" indicates that there is no separate graphics panel (poster) for this assembly  
The parts of this assembly are shown with the same mid-section number on the figure

### 1 Positions and subpositions

Pos.	Sachnummer Product number	Benennung (Description)	Technische Info Technical info	Description (Benennung)	Menge Quantity	Einheit Unit
0370	1315.201.054	RUECKLAUFBOLZEN	KPL.16S151*SG*L= 79	REV.IDLER SHAFT	1	Stk
/0120	0631.329.293	SPANNSTIFT		SLOT. PIN	1	Stk

Positions marked with "/" are the individual items of a completion  
For example: Position 0370 contains a centering pin with the position /0120

### 2 Combinations with standardized parts

Pos.	Sachnummer Product number	Benennung (Description)	Technische Info Technical info	Description (Benennung)	Menge Quantity	Einheit Unit
0630		VERSCHL.SCHR.		SCREW PLUG	1	Stk
	0636.302.067	VERSCHL.SCHR.		SCREW PLUG	1	Stk
	0634.801.249	DICHTRING	A 26 X 31	SEALING RING	1	Stk

The parts list shows the components included in the combination of standardized parts

### 3 Depiction of position/item number on the figure and in the parts list

01.620 - on the figure      01 relates to the assembly in which the position is included. Due to program-related reasons, it is shown on the figure.

0620 - in the parts list

Pos.	Sachnummer Product number	Benennung (Description)	Technische Info Technical info	Description (Benennung)	Menge Quantity	Einheit Unit
0620	0732.040.736	DRUCKFEDER		COMPRESSION SPRING	1	Stk

### 4 \*-Positions

Positions marked with an \* are optional i.e. inclusion in the parts list is not mandatory.  
The following note is shown on the figure

je nach Stücklistenausführung  
depending on spec. number  
\*  
suivant la nomenclature  
secondo la distinta base

### 5 Parts, dotted display

Parts with dotted display on the figure are only used for orientation of other parts

# Assembly group overview

Page 1 from 2

Material number: 2094.011.003



T 7334 /

Graphics	Pos.	Material number	Name	Quantity	Amend. no.	Techn. Info.
209708000400	500	2097.080.004	TRA 25	1		
209410102000	10	2094.101.020	TRANSMISSION HOUSING	1		
209412201700	230	2094.122.017	PUMP DRIVE	1		
209414702500	350	2094.147.025	OIL SUPPLY	1		
209416801201	470	2094.168.012	SPLITTER BOX	1		
	700	2094.198.037	REPAIR KIT	1		
209413600100	270	2094.136.001	OIL SUPPLY	1		
209415900901	450	2094.159.009	LASTSCHALTGR	1		
	900	2094.198.039	REPAIR KIT	1		
209414601000	330	2094.146.010	FRONT WH.DRIVE	1		
209414641600	340	2094.146.416	FRONT WH.DRIVE	1		
209411400600	190	2094.114.006	CRAWLER	1		
209410401400	50	2094.104.014	MAIN SHAFT	1		
209410301100	30	2094.103.011	COUNTERSHAFT	1		
209410340700	40	2094.103.407	COUNTERSHAFT	1		
209410601300	70	2094.106.013	SHIFT SYSTEM	1		
209415201200	410	2094.152.012	HYDR.CONTROL	1		

# Assembly group overview

Page 2 from 2

Material number: 2094.011.003



T 7334 /

Graphics	Pos.	Material number	Name	Quantity	Amend. no.	Techn. Info.
2094110019 00	80	2094.110.019	P.T.O. SHAFT	1		
2094171006 00	170	2094.171.006	MAIN CLUTCH	1		
2094124012 00	250	2094.124.012	CLOSING COMPONENTS	1		
	KIT	2094.298.031	REPAIR KIT	1		

# Plant

Page 1 from 1

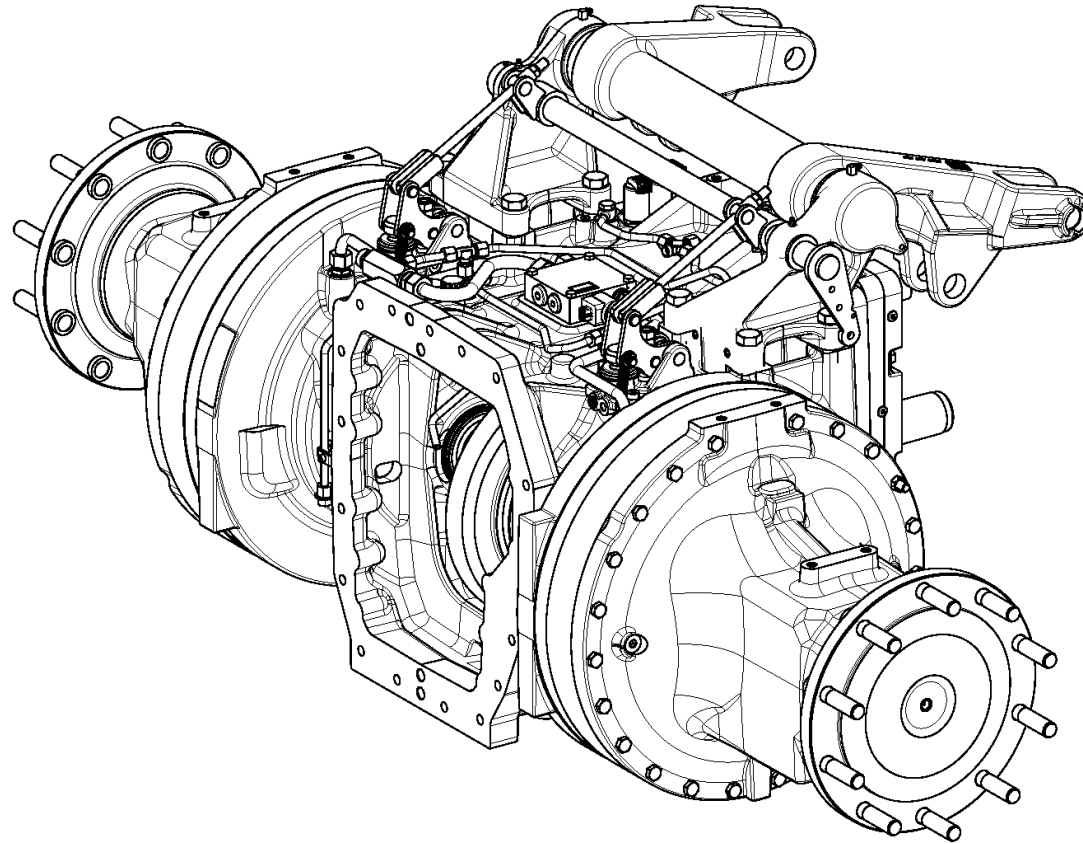
Material number: 2094.011.003

Plant: 209708000400

Material-assembly-group-no: 2097.080.004



T 7334 /  
TRA 25



# Plant

Page 1 from 2

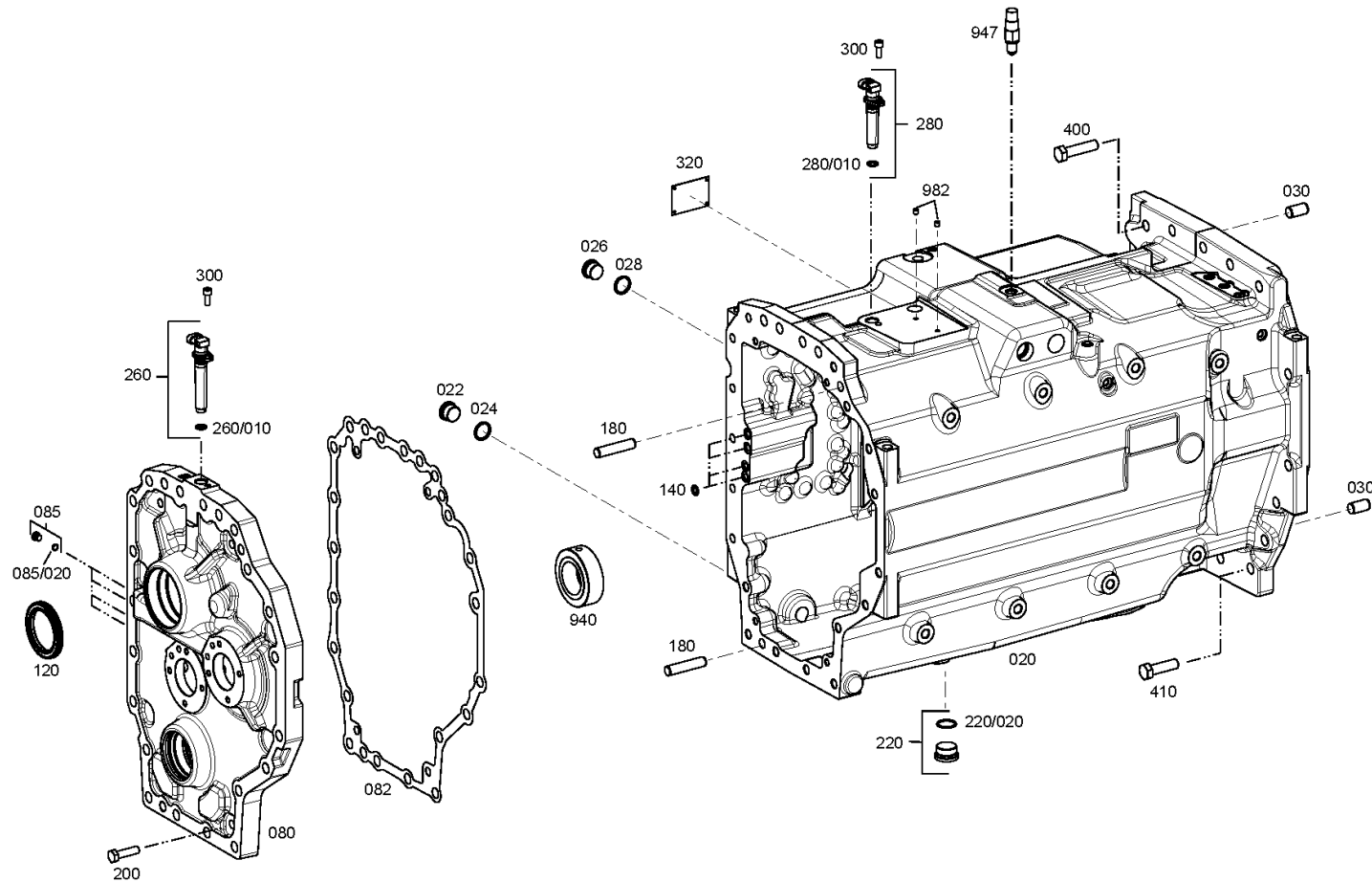
Material number: 2094.011.003

Plant: 209410102000

Material-assembly-group-no: 2094.101.020



T 7334 /  
TRANSMISSION HOUSING



# Plant

Page 2 from 2

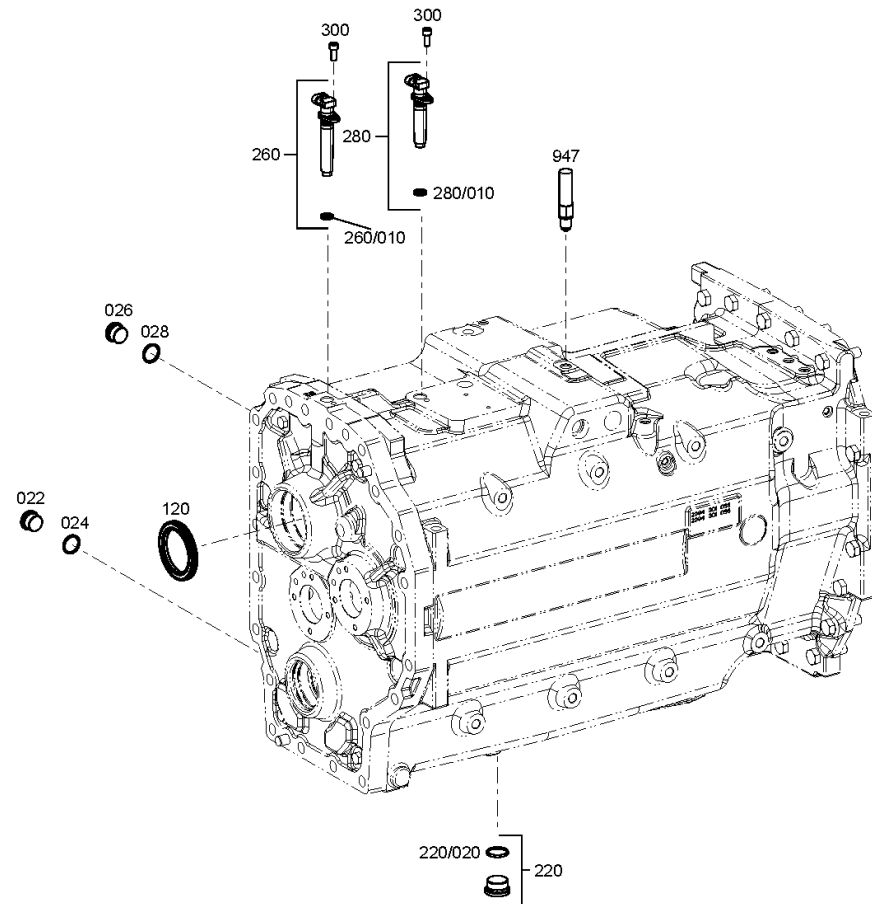
Material number: 2094.011.003

Plant: 209410102080

Material-assembly-group-no: 2094.101.020



T 7334 /  
TRANSMISSION HOUSING



# Parts list

Page 1 from 1



T 7334 /

Material number: 2094.011.003

Plant: 209410102000

Material-assembly-group-no: 2094.101.020

	Pos.	Material number	Customer material	Name	Quantity	ME	Amend. no.	Techn. Info.	Rep kit	Alternative material
	20	2094.301.068		HOUSING						2094.298.055
	22	0636.302.008		SCREW PLUG	1			M26X1,5		
	24	0634.801.165		SEALING RING	1			26X31		
	26	0636.302.008		SCREW PLUG	1			M26X1,5		
	28	0634.801.165		SEALING RING	1			26X31		
	30	0631.306.155		CYLINDRICAL PIN	2			16X30		
	80	2094.301.071		COVER	1					
	82	2094.301.030		GASKET	1					
	85	4475.280.197		SCREW PLUG	4			M10X1 KPL.MIT O-RING		
	/20	0634.303.280		O-RING	1			8X1,5		
	120	0750.111.371		SHAFT SEAL	1			70,0X95,0X10,0/11,0		
	140	0634.303.085		O-RING	4			12X3		
	180	0631.306.670		CYLINDRICAL PIN	2			16X70		
	200	0636.011.356		HEXAGON SCREW	4			M12X45		
	220	4475.280.066		SCREW PLUG	1					
	/20	0634.303.312		O-RING	1			30X2,5		
	260	0501.317.947		SPEED SENSOR	1					
	/10	0634.313.728		O-RING	1			15,54X2,62		
	280	0501.317.945		SPEED SENSOR	1					
	/10	0634.313.728		O-RING	1			15,54X2,62		
	300	0636.101.027		CAP SCREW	2			M8X20		
	320	0730.365.092		TYPE PLATE	1			ZF-Standard/Passau		
	400	0636.011.403		HEXAGON SCREW	5			M16X65		
	410	0636.011.355		HEXAGON SCREW	12			M16X55		
	940	2094.301.039		BUSH	1					
	947	0501.209.878		TAPPET SWITCH	1					
	950	0636.011.355		HEXAGON SCREW	4			M16X55		
	960	0630.001.020		WASHER	4					
	982	0631.610.020		SET SCREW	2			M8X8		
	20	2094.298.055		HOUSING	1					



# Plant

Page 1 from 2

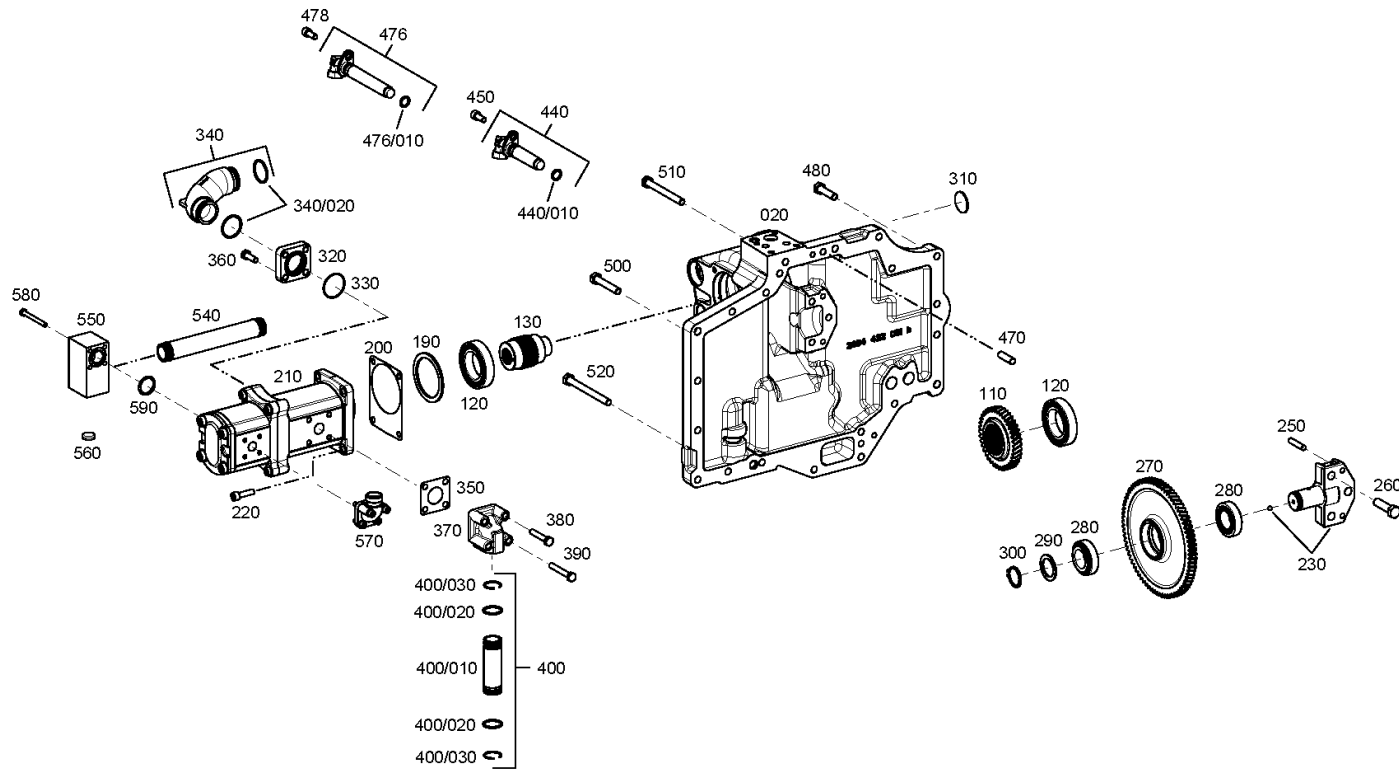
Material number: 2094.011.003

Plant: 209412201700

Material-assembly-group-no: 2094.122.017



T 7334 /  
PUMP DRIVE



# Plant

Page 2 from 2

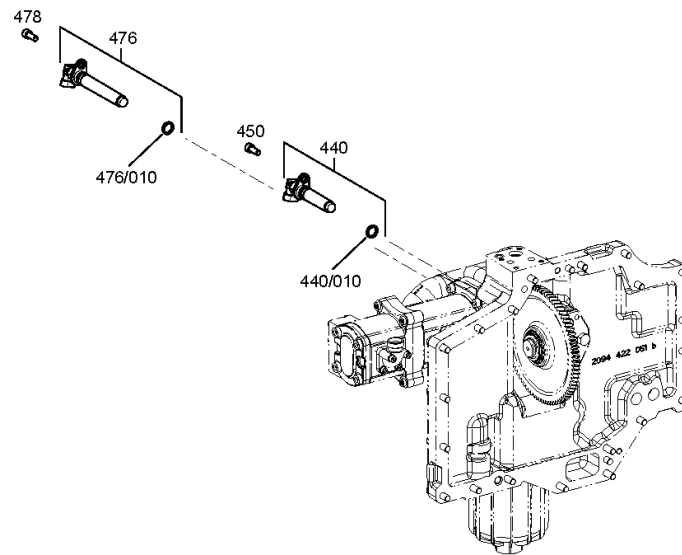
Material number: 2094.011.003

Plant: 209412201780

Material-assembly-group-no: 2094.122.017



T 7334 /  
PUMP DRIVE



# Parts list

Page 1 from 2



T 7334 /

Material number: 2094.011.003

Plant: 209412201700

Material-assembly-group-no: 2094.122.017

	Pos.	Material number	Customer material	Name	Quantity	ME	Amend. no.	Techn. Info.	Rep kit	Alternative material
	20	2094.322.065		HOUSING						2094.298.061
	110	2094.322.053		SPUR GEAR	1			Z=39		
	120	0750.116.176		BALL BEARING	2			45,000X75,000X16,000		
	130	2093.322.034		BUSH	1			Z=38		
	190	0730.109.590		SHIM	1			S=3,0		
	200	2052.322.097		GASKET	1					
	210	0501.009.131		PUMP	1					
	220	0636.101.029		CAP SCREW	4			M8X25		
	230	2094.322.032		BRACKET						2094.298.046
	240	0635.460.010		BALL	1			6		
	250	0631.306.754		CYLINDRICAL PIN	2			8X36		
	260	0636.011.356		HEXAGON SCREW	3			M12X45		
	270	2094.322.054		SPUR GEAR	1			Z=79		
	280	0750.117.551		TAPER ROLLER BEARING	2			30,000X55,000X17,000		
	290	---		SHIM	1					
	---	0730.007.232		SHIM	1			A=1,80 IN 0730 003 443(2)		
	---	0730.007.600		SHIM	1			A=1,85		
	---	0730.007.569		SHIM	1			A=1,90		
	---	0730.007.570		SHIM	1			A=1,95		
	---	0730.006.994		SHIM	1			A=2,00		
	---	0730.006.995		SHIM	1			A=2,05		
	---	0730.006.996		SHIM	1			A=2,10		
	---	0730.006.997		SHIM	1			A=2,15		
	---	0730.006.998		SHIM	1			A=2,20		
	---	0730.006.999		SHIM	1			A=2,25		
	---	0730.007.001		SHIM	1			A=2,30		
	---	0730.007.002		SHIM	1			A=2,35		
	---	0730.007.003		SHIM	1			A=2,40		
	---	0730.007.004		SHIM	1			A=2,45		
	---	0730.007.005		SHIM	1			A=2,50		
	300	0630.531.036		RETAINING RING	1			30X2		
	310	0630.362.040		SEALING DISC	1					
	320	2093.336.011		FLANGE	1					
	330	0634.303.268		O-RING	1			38X1,5		

# Parts list

Page 2 from 2



T 7334 /

Material number: 2094.011.003

Plant: 209412201700

Material-assembly-group-no: 2094.122.017

	Pos.	Material number	Customer material	Name	Quantity	ME	Amend. no.	Techn. Info.	Rep kit	Alternative material
	340	2093.247.057		MANIFOLD	1			KPL.		
	/20	0634.303.340		O-RING	2			33X2,5		
	350	2094.322.018		GASKET	1					
	360	0636.015.089		HEXAGON SCREW	4			M8X25		
	370	2094.347.012		MANIFOLD	1					
	380	0636.010.084		HEXAGON SCREW	2			M8X45		
	390	0636.011.757		HEXAGON SCREW	2			M8X55		
	400	2094.247.025		TUBE	1			KOMPLETTIERUNG		
	/20	0634.306.214		O-RING	2			23X2,5		
	/30	0630.505.521		SNAP RING	2					
	440	0501.317.945		SPEED SENSOR	1					
	/10	0634.313.728		O-RING	1			15,54X2,62		
	450	0636.101.027		CAP SCREW	1			M8X20		
	470	0631.306.076		CYLINDRICAL PIN	2			10X35		
	476	0501.317.948		SPEED SENSOR	1					
	/10	0634.313.728		O-RING	1			15,54X2,62		
	477	0671.190.148		GREASE	0,010					
	478	0636.101.027		CAP SCREW	1			M8X20		
	480	0636.010.156		HEXAGON SCREW	13			M10X40		
	500	0636.010.174		HEXAGON SCREW	3			M10X60		
	510	0636.010.192		HEXAGON SCREW	2			M10X95		
	520	0636.010.200		HEXAGON SCREW	2			M10X110		
	540	2094.247.050		TUBE	1					
	550	2094.322.060		FLANGE	1					
	560	0630.361.033		SEALING CAP	1					
	562	0666.690.063		JOINTING COMPOUND	0,100					
	570	0637.100.105		PUMP FLANGE	1					
	580	0636.010.046		HEXAGON SCREW	4			M6X60		
	590	0634.303.259		O-RING	1			25X3		
	230	2094.298.046		BRACKET	1					
	20	2094.298.061		HOUSING	1					

# Plant

Page 1 from 2

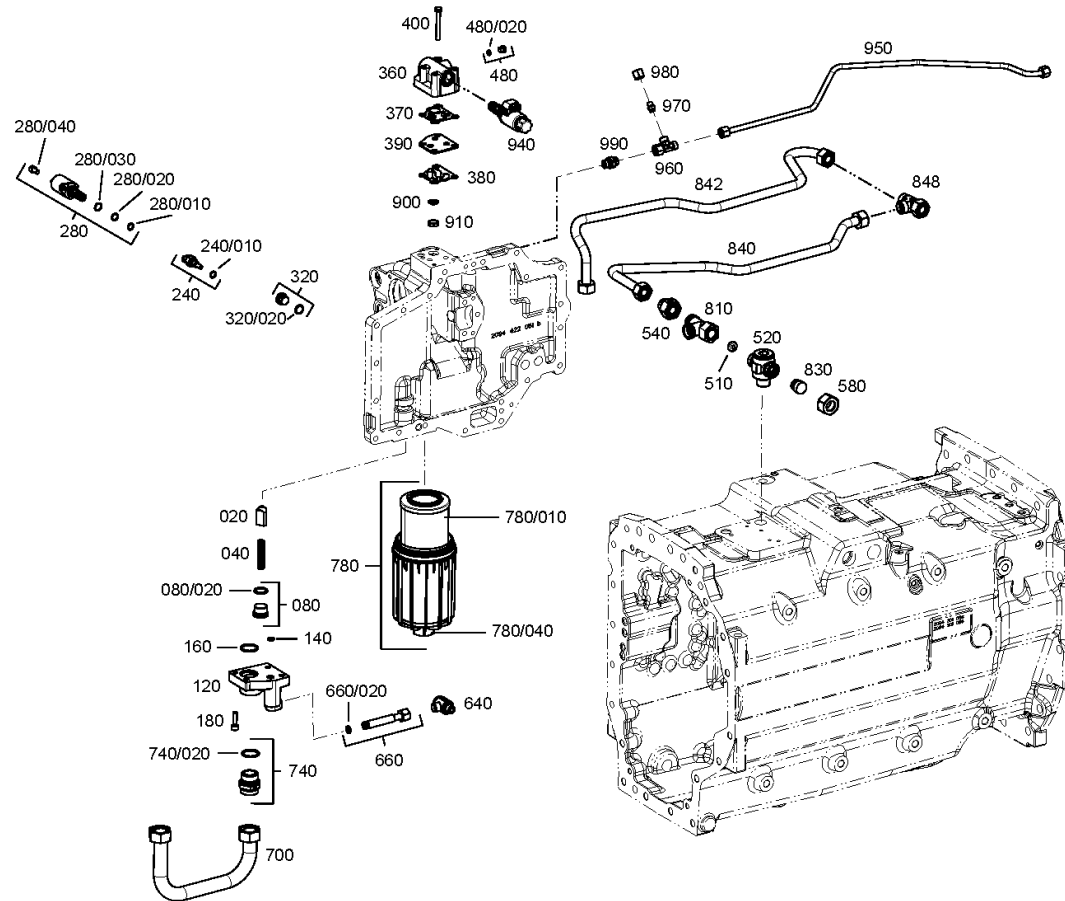
Material number: 2094.011.003

Plant: 209414702500

Material-assembly-group-no: 2094.147.025



T 7334 /  
OIL SUPPLY



# Plant

Page 2 from 2

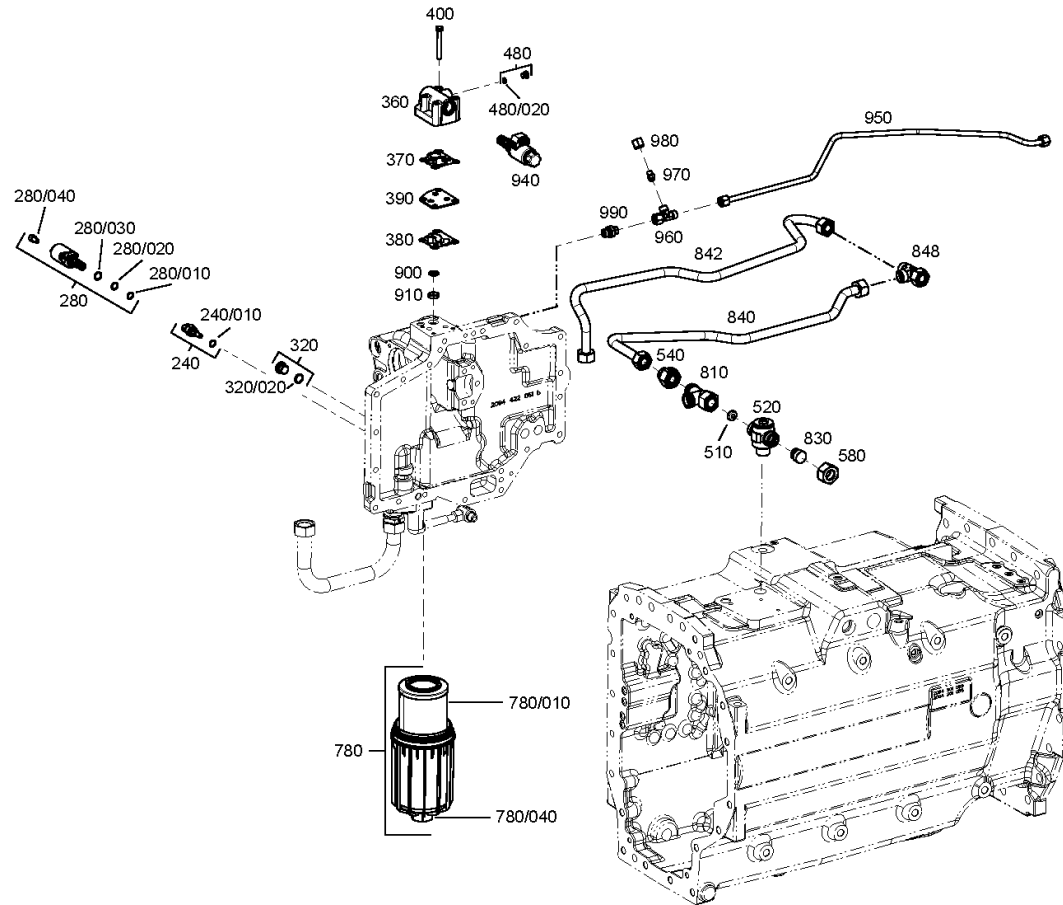
Material number: 2094.011.003

Plant: 209414702580

Material-assembly-group-no: 2094.147.025



T 7334 /  
OIL SUPPLY



# Parts list

Page 1 from 2



T 7334 /

Material number: 2094.011.003

Plant: 209414702500

Material-assembly-group-no: 2094.147.025

	Pos.	Material number	Customer material	Name	Quantity	ME	Amend. no.	Techn. Info.	Rep kit	Alternative material
	20	2094.336.043		VALVE CONE	1					
	40	1405.301.021		COMPRESSION SPRING	1					
	80	4475.280.035		SCREW PLUG	1			M26X1,5 KPL.MIT O-RING		
	/20	0634.303.233		O-RING	1			23X2		
	120	2094.347.031		FLANGE	1					
	140	0634.313.035		O-RING	1			8X2,5		
	160	0634.306.047		O-RING	1			30X3		
	180	0636.101.031		CAP SCREW	4			M8X30		
	240	0501.322.533		TEMPERATURE SENSOR	1			TEMP GEBER EXT KURZ		
	/10	0634.313.366		O-RING	1			11X2		
	280	0501.325.280		SOLENOID VALVE	1					
	/10	0501.327.379		O-RING	1			11,2X1,8/27310111016384		
	/20	0501.327.378		O-RING	1			12,4X1,78/273111017012		
	/30	0501.327.380		O-RING	1			14X1,78/273111014178		
	/40	0501.327.381		SCREW	1			M8X16/309543008016		
	320	4475.280.011		SCREW PLUG	1			M18X1,5 KPL.MIT O-RING		
	/20	0634.306.524		O-RING	1			15X2		
	360	2094.347.046		HOUSING	1					
	370	2094.347.049		GASKET	1					
	380	2094.347.048		GASKET	1					
	390	2094.347.050		INTERMEDIATE SHEET	1					
	400	0636.010.098		HEXAGON SCREW	4			M8X65		
	480	4475.280.197		SCREW PLUG	1			M10X1 KPL.MIT O-RING		
	/20	0634.303.280		O-RING	1			8X1,5		
	510	0730.361.223		SEALING CAP	1			A=20		
	520	0501.323.874		PIPE UNION	1					
	540	0637.885.523		REDUCER	1					
	580	0637.100.574		UNION NUT	1					
	640	0501.309.404		PIPE UNION	1					
	660	2094.247.027		TUBE	1			KOMPLETTIERUNG		
	/20	0634.313.593		O-RING	1			10X2,5		
	700	2094.247.037		TUBE	1			KPL.		
	740	4475.280.233		PIPE UNION	1					
	/20	0634.306.047		O-RING	1			30X3		

# Parts list

Page 2 from 2



T 7334 /

Material number: 2094.011.003

Plant: 209414702500

Material-assembly-group-no: 2094.147.025

	Pos.	Material number	Customer material	Name	Quantity	ME	Amend. no.	Techn. Info.	Rep kit	Alternative material
🛒	780	0501.214.047		SUCTION FILTER	1					
🛒	/10	0501.321.325		INSERT	1					
🛒	/20	0501.322.184		SEALING RING	1					
🛒	/30	0501.322.185		O-RING	1					
🛒	/40	0501.322.186		SCREW PLUG	1					
🛒	810	0637.847.406		T-ADAPTER	1					
🛒	830	0637.880.864		PLUG	1					
🛒	840	2094.247.048		TUBE	1					
🛒	842	2094.247.049		TUBE	1					
🛒	848	0501.316.179		PIPE UNION	1			M26X1,5		
🛒	900	0501.316.130		SCREEN INSERT	1					
🛒	910	0730.008.687		BUSH	1			A=5,00		
🛒	940	0501.338.132		PRESSURE REGULATOR	1					
🛒	950	2094.247.047		TUBE	1					
🛒	960	0637.100.678		CONNECTING SOCKET	1					
🛒	970	0637.100.650		LOCKING CONE	1					
🛒	980	0637.100.271		UNION NUT	1					
🛒	990	0637.101.388		SCREW-IN SLEEVE	1					



# Plant

Page 1 from 3

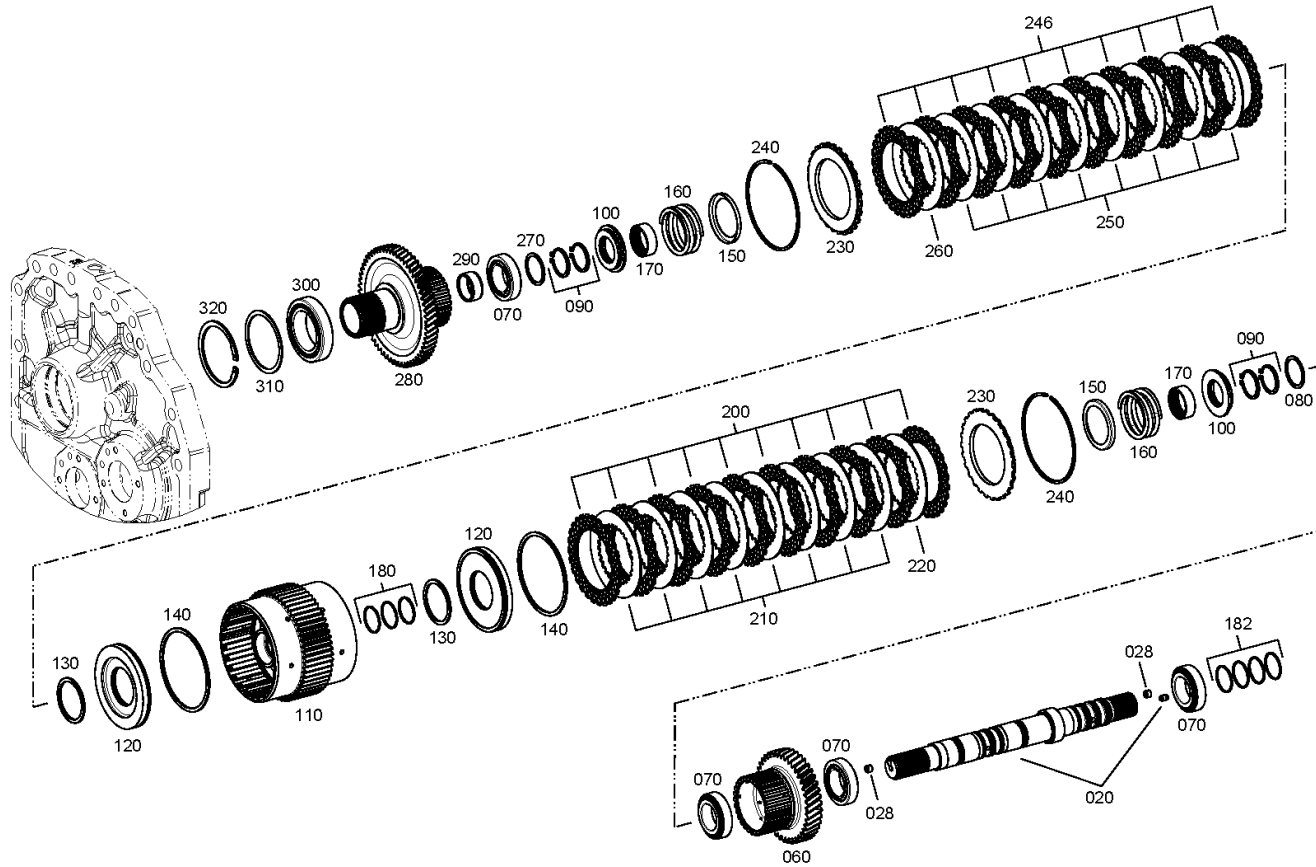
Material number: 2094.011.003

Plant: 209416801201

SPLITTER BOX



T 7334 /  
SPLITTER BOX



# Plant

Page 2 from 3

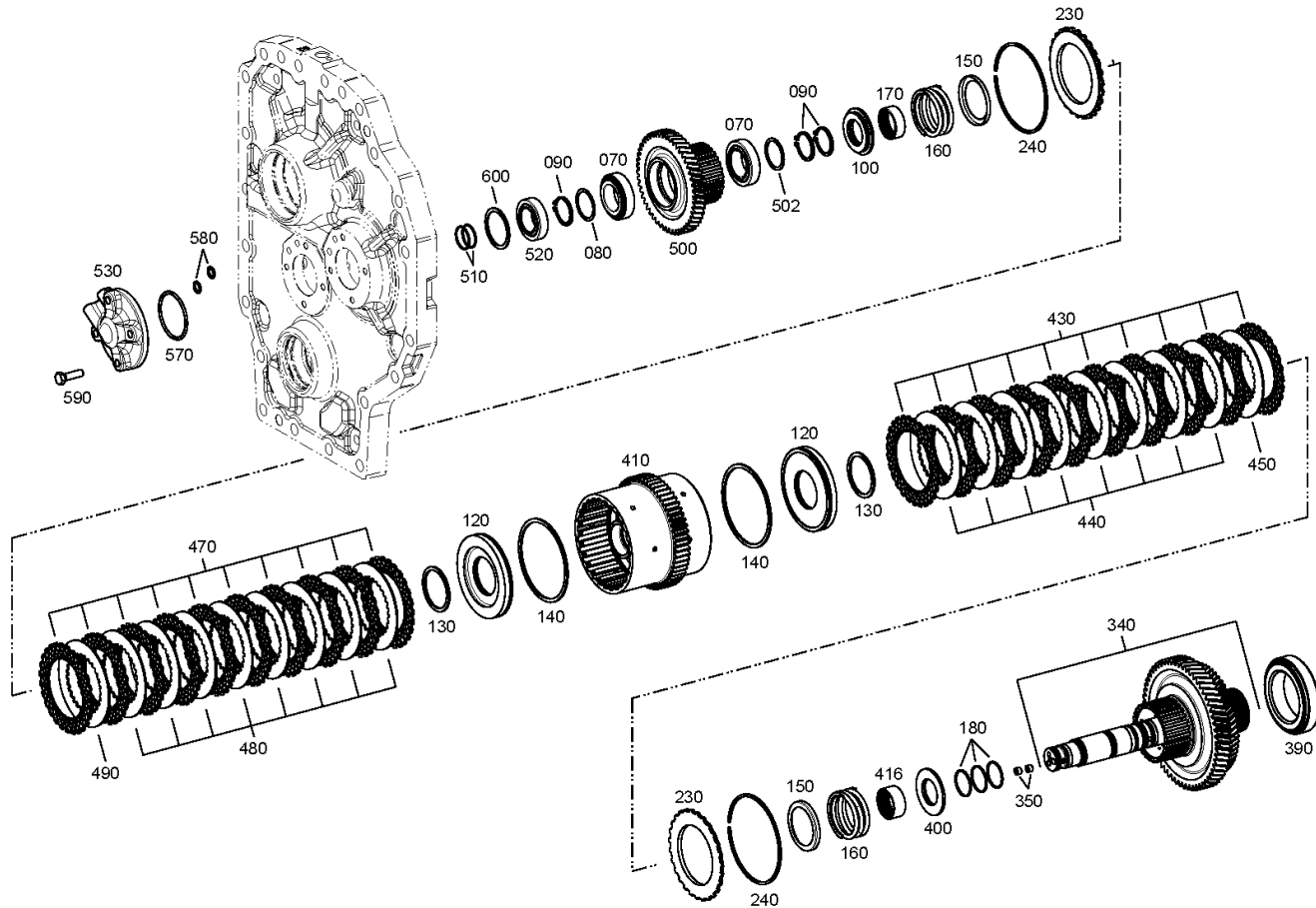
Material number: 2094.011.003

Plant: 209416801202

SPLITTER BOX



T 7334 /  
SPLITTER BOX



# Plant

Page 3 from 3

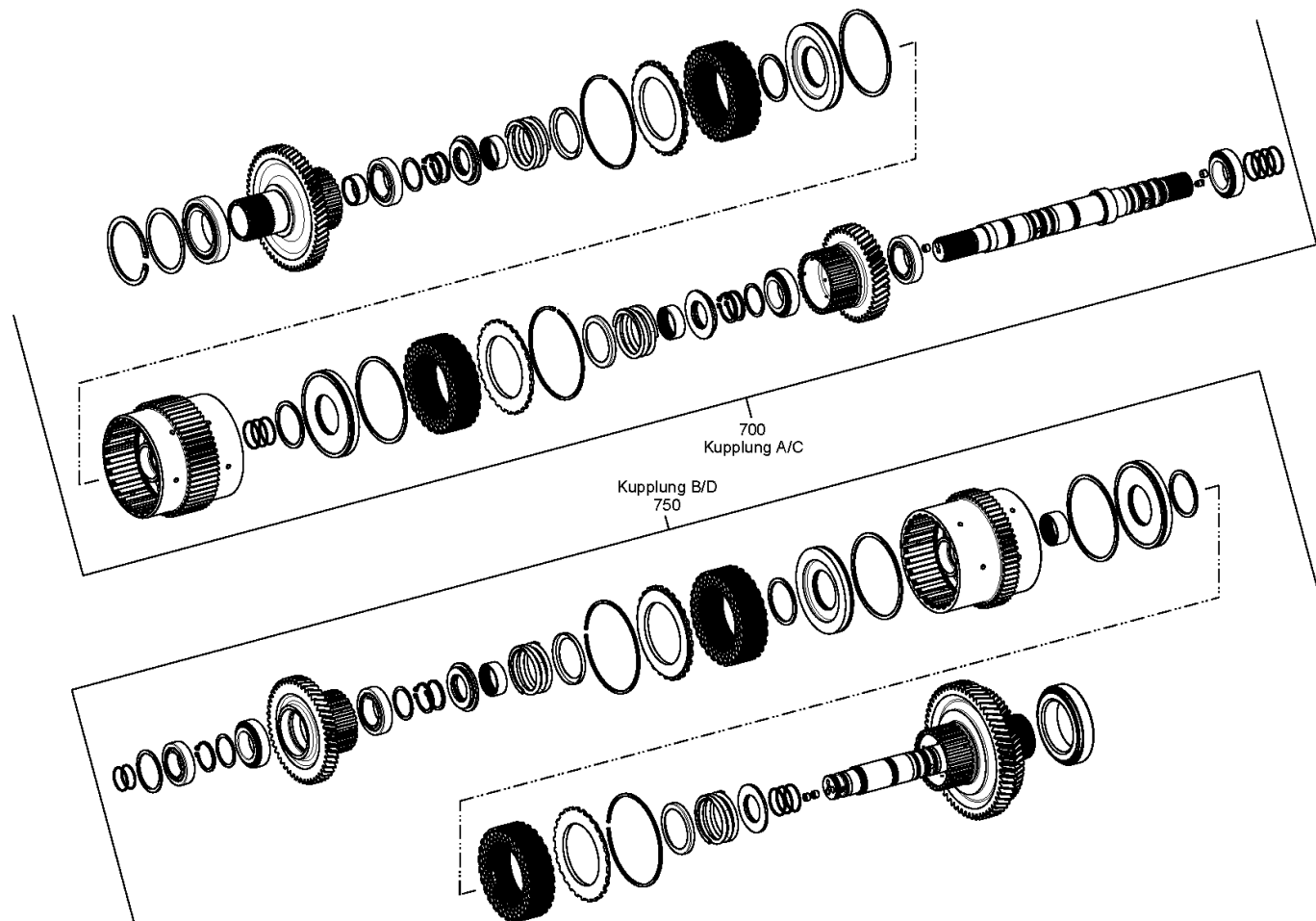
Material number: 2094.011.003

Plant: 209416801203

SPLITTER BOX



T 7334 /  
SPLITTER BOX



# Parts list

Page 1 from 5



T 7334 /

Material number: 2094.011.003

Plant: 209416801201

Material-assembly-group-no: 2094.168.012

	Pos.	Material number	Customer material	Name	Quantity	ME	Amend. no.	Techn. Info.	Rep kit	Alternative material
	20	2094.298.035		INPUT SHAFT	1					
	20	2094.359.070		INPUT SHAFT			K00125/0510	Z=26		2094.298.035
	28	0731.607.026		ORIFICE	2			D=0,8 IN 0731 607 018(2)		
	60	2094.359.048		SPUR GEAR	1			Z=41		
	70	0750.117.656		TAPER ROLLER BEARING	6			40,000X68,000X19,000		
	80	---		SHIM	2					
	---	0730.111.645		SHIM	1			A=1,25		
	---	0730.107.829		SHIM	1			A=1,40 IN 0730 107 825(2)		
	---	0730.107.833		SHIM	1			A=1,60 IN 0730 107 825(2)		
	---	0730.107.837		SHIM	1			A=1,80 IN 0730 107 825(2)		
	---	0730.107.826		SHIM	1			S=1,0		
	---	0730.107.827		SHIM	1			S=1,3		
	---	0730.110.527		SHIM	1			S=1,325		
	---	0730.107.828		SHIM	1			S=1,35		
	---	0730.110.528		SHIM	1			S=1,375		
	---	0730.110.529		SHIM	1			S=1,425		
	---	0730.107.830		SHIM	1			S=1,45		
	---	0730.109.572		SHIM	1			S=1,475		
	---	0730.107.831		SHIM	1			S=1,5		
	---	0730.109.573		SHIM	1			S=1,525		
	---	0730.107.832		SHIM	1			S=1,55		
	---	0730.109.574		SHIM	1			S=1,575		
	---	0730.109.575		SHIM	1			S=1,625		
	---	0730.107.834		SHIM	1			S=1,65		
	---	0730.109.576		SHIM	1			S=1,675		
	---	0730.107.835		SHIM	1			S=1,7		
	---	0730.109.577		SHIM	1			S=1,725		
	---	0730.107.836		SHIM	1			S=1,75		
	---	0730.109.578		SHIM	1			S=1,775		
	---	0730.109.579		SHIM	1			S=1,825		
	---	0730.109.580		SHIM	1			S=1,85		
	90	0501.314.965		RETAINING RING	7					
	100	0735.298.130		NEEDLE BEARING	3			40,0X70,0X10,0		
	110	2094.259.027		DISC CARRIER	1			Z=58		

# Parts list

Page 2 from 5



T 7334 /

Material number: 2094.011.003

Plant: 209416801201

Material-assembly-group-no: 2094.168.012

	Pos.	Material number	Customer material	Name	Quantity	ME	Amend. no.	Techn. Info.	Rep kit	Alternative material
	120	2094.359.004		PISTON	4					
	130	0501.338.223		PROFILE SEALING RING	4			60X71,4X2,5		
	140	0501.338.224		PROFILE SEALING RING	4			109X120,4X2,5		
	150	4642.308.083		GUIDE RING	4					
	160	0732.041.183		COMPRESSION SPRING	4					
	170	0750.115.365		NEEDLE SLEEVE	3			40,000X47,000X16,000		
	180	0634.402.541		R-RING	6			40X2		
	182	0634.402.541		R-RING	4			40X2		
	200	0501.313.598		OUTER CLUTCH DISK	10			D=137.5		
	210	4642.308.332		INNER CLUTCH DISK	8			S=2,0 Z=29		
	220	---		INNER CLUTCH DISK	1					
	---	4642.308.330		INNER CLUTCH DISK	1		K00292/9510	S=1,5 Z=29		
	---	4642.308.332		INNER CLUTCH DISK	1			S=2,0 Z=29		
	---	4642.308.331		INNER CLUTCH DISK	1			S=2,5 Z=29		
	230	4642.308.185		END SHIM	4					
	240	0730.513.502		SNAP RING	4		K00059/9910	A=2,50		
	246	0501.313.598		OUTER CLUTCH DISK	10			D=137.5		
	250	4642.308.332		INNER CLUTCH DISK	8			S=2,0 Z=29		
	260	---		INNER CLUTCH DISK	1					
	---	4642.308.330		INNER CLUTCH DISK	1		K00292/9510	S=1,5 Z=29		
	---	4642.308.332		INNER CLUTCH DISK	1			S=2,0 Z=29		
	---	4642.308.331		INNER CLUTCH DISK	1			S=2,5 Z=29		
	270	0730.107.831		SHIM	1			S=1,5		
	280	2094.359.046		INPUT GEAR	1			Z=59		
	290	0750.115.361		NEEDLE CAGE	1			K 35X42X18 B		
	300	0750.117.505		TAPER ROLLER BEARING	1			60,000X95,000X23,000		
	310	---		SHIM	1					
	---	0730.107.839		SHIM	1			A=1,20		
	---	0730.107.840		SHIM	1			A=1,25		
	---	0730.107.841		SHIM	1			A=1,30		
	---	0730.107.842		SHIM	1			A=1,35		
	---	0730.107.843		SHIM	1			A=1,40		
	---	0730.107.844		SHIM	1			A=1,45		
	---	0730.107.845		SHIM	1			A=1,50		

# Parts list

Page 3 from 5



T 7334 /

Material number: 2094.011.003

Plant: 209416801201

Material-assembly-group-no: 2094.168.012

	Pos.	Material number	Customer material	Name	Quantity	ME	Amend. no.	Techn. Info.	Rep kit	Alternative material
	---	0730.107.846		SHIM	1			A=1,55		
	---	0730.107.847		SHIM	1			A=1,60		
	---	0730.107.848		SHIM	1			A=1,65		
	---	0730.107.849		SUPPORT DISK	1			A=1,70		
	---	0730.107.850		SHIM	1			A=1,75		
	---	0730.107.851		SHIM	1			A=1,80		
	---	0730.107.852		SHIM	1			A=1,85		
	---	0730.107.853		SHIM	1			A=1,90		
	---	0730.107.854		SHIM	1			A=1,95		
	---	0730.107.855		SHIM	1			A=2,00		
	---	0730.107.856		SHIM	1			A=2,05		
	---	0730.107.857		SHIM	1			A=2,10		
	---	0730.107.858		SHIM	1			A=2,15		
	---	0730.107.859		SHIM	1			A=2,20		
	320	0630.502.043		RETAINING RING	1			95X3		
	340	2094.259.008		OUTPUT SHAFT	1					
	350	0631.610.010		SET SCREW	2			M10X8		
	390	0750.117.789		TAPERED ROLLER BEARING	1			75,000X115,000X25,000		
	400	0735.298.131		NEEDLE BEARING	1			40,0X70,0X6,5		
	410	2094.259.029		DISC CARRIER	1			Z=59		
	416	0635.303.113		NEEDLE SLEEVE	1		K00642/9810	40X47X20		
	430	0501.313.598		OUTER CLUTCH DISK	10			D=137.5		
	440	4642.308.332		INNER CLUTCH DISK	8			S=2,0 Z=29		
	450	---		INNER CLUTCH DISK	1					
	---	4642.308.330		INNER CLUTCH DISK	1		K00292/9510	S=1,5 Z=29		
	---	4642.308.332		INNER CLUTCH DISK	1			S=2,0 Z=29		
	---	4642.308.331		INNER CLUTCH DISK	1			S=2,5 Z=29		
	470	0501.313.598		OUTER CLUTCH DISK	10			D=137.5		
	480	4642.308.332		INNER CLUTCH DISK	8			S=2,0 Z=29		
	490	---		INNER CLUTCH DISK	1					
	---	4642.308.330		INNER CLUTCH DISK	1		K00292/9510	S=1,5 Z=29		
	---	4642.308.332		INNER CLUTCH DISK	1			S=2,0 Z=29		
	---	4642.308.331		INNER CLUTCH DISK	1			S=2,5 Z=29		
	500	2094.359.040		SPUR GEAR	1			Z=50		

# Parts list

Page 4 from 5



T 7334 /

Material number: 2094.011.003

Plant: 209416801201

Material-assembly-group-no: 2094.168.012

	Pos.	Material number	Customer material	Name	Quantity	ME	Amend. no.	Techn. Info.	Rep kit	Alternative material
	502	0730.107.831		SHIM	1			S=1,5		
	510	0634.402.540		R-RING	2			35X2		
	520	0750.117.503		TAPER ROLLER BEARING	1			35,000X62,000X18,000		
	530	2094.259.007		COVER	1					
	570	0634.303.303		O-RING	1			62X4		
	580	0634.303.085		O-RING	2			12X3		
	590	0636.015.129		HEXAGON SCREW	4			M10X35		
	600	---		SHIM	1					
	---	0730.111.834		SHIM	1			A=1,05		
	---	0730.111.835		SHIM	1			A=1,10		
	---	0730.111.836		SHIM	1			A=1,15		
	---	0730.106.657		SHIM	1			A=1,20		
	---	0730.106.658		SHIM	1			A=1,25		
	---	0730.101.078		SHIM	1			A=1,30		
	---	0730.106.659		SHIM	1			A=1,35		
	---	0730.103.474		SHIM	1			A=1,40		
	---	0730.106.660		SHIM	1			A=1,45		
	---	0730.101.077		SHIM	1			A=1,50		
	---	0730.106.661		SHIM	1			A=1,55		
	---	0730.103.473		SHIM	1			A=1,60		
	---	0730.106.662		SHIM	1			A=1,65		
	---	0730.101.076		SHIM	1			A=1,70		
	---	0730.111.797		SHIM	1			A=1,72		
	---	0730.111.798		SHIM	1			A=1,74		
	---	0730.106.663		SHIM	1			A=1,75		
	---	0730.111.799		SHIM	1			A=1,76		
	---	0730.111.800		SHIM	1			A=1,78		
	---	0730.101.461		SHIM	1			A=1,80		
	---	0730.111.801		SHIM	1			A=1,82		
	---	0730.111.802		SHIM	1			A=1,84		
	---	0730.107.518		SHIM	1			A=1,85		
	---	0730.111.803		SHIM	1			A=1,86		
	---	0730.111.804		SHIM	1			A=1,88		
	---	0730.101.075		SHIM	1			A=1,90		

# Parts list

Page 5 from 5



T 7334 /

Material number: 2094.011.003

Plant: 209416801201

Material-assembly-group-no: 2094.168.012

	Pos.	Material number	Customer material	Name	Quantity	ME	Amend. no.	Techn. Info.	Rep kit	Alternative material
	---	0730.111.805		SHIM	1			A=1,92		
	---	0730.111.806		SHIM	1			A=1,94		
	---	0730.107.519		SHIM	1			A=1,95		
	---	0730.111.807		SHIM	1			A=1,96		
	---	0730.111.808		SHIM	1			A=1,98		
	---	0730.101.462		SHIM	1			A=2,00		
	---	0730.111.809		SHIM	1			A=2,02		
	---	0730.111.810		SHIM	1			A=2,04		
	---	0730.107.520		SHIM	1			A=2,05		
	---	0730.111.811		SHIM	1			A=2,06		
	---	0730.111.812		SHIM	1			A=2,08		
	---	0730.101.074		SHIM	1			A=2,10		
	---	0730.107.521		SHIM	1			A=2,15		
	---	0730.103.010		SHIM	1			A=2,20		
	---	0730.107.522		SHIM	1			A=2,25		
	---	0730.101.073		SHIM	1			A=2,30		
	---	0730.109.610		SHIM	1			A=2,35		
	---	0730.109.611		SHIM	1			A=2,40		
	---	0730.109.612		SHIM	1			A=2,45		
	---	0730.109.613		SHIM	1			A=2,50		
	750	2094.298.031		REPAIR KIT	1					



# Plant

Page 1 from 1

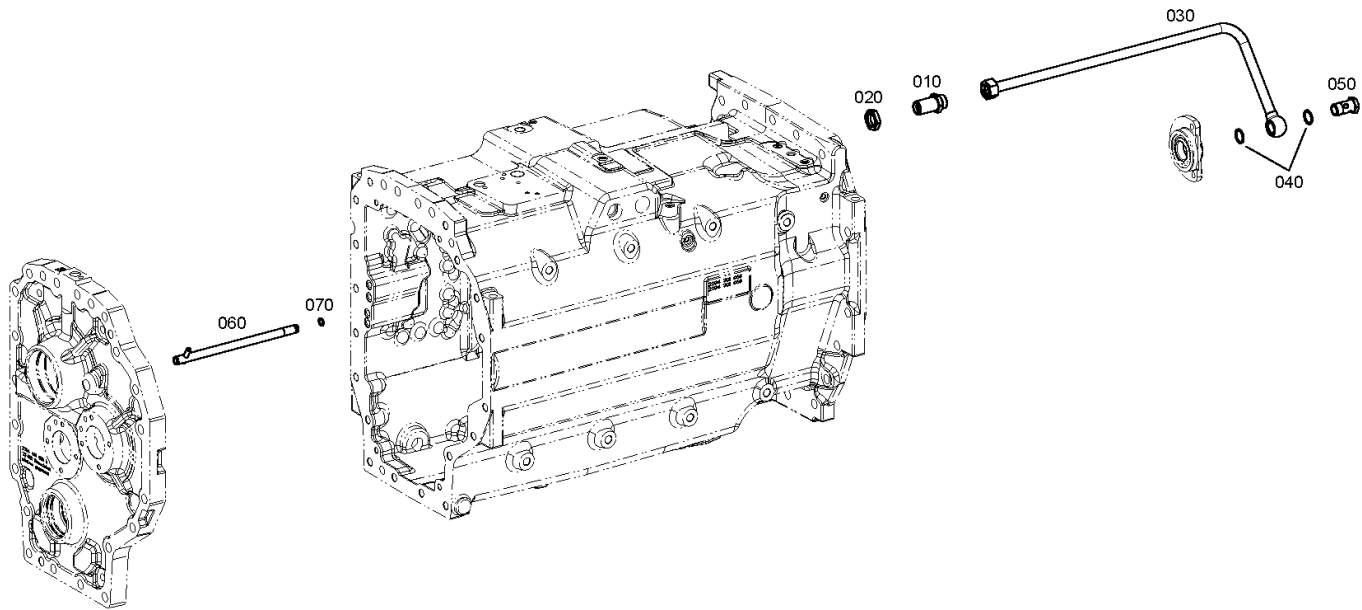
Material number: 2094.011.003

Plant: 209413600100

Material-assembly-group-no: 2094.136.001



T 7334 /  
OIL SUPPLY



# Parts list

Page 1 from 1

Material number: 2094.011.003

Plant: 209413600100

Material-assembly-group-no: 2094.136.001



T 7334 /

	Pos.	Material number	Customer material	Name	Quantity	ME	Amend. no.	Techn. Info.	Rep kit	Alternative material
	10	0637.101.206		BULKHEAD UNION	1					
	20	0637.019.004		NUT	1			M26X1,5		
	30	2094.236.001		TUBE	1					
	40	0634.801.073		SEALING RING	2			22X27		
	50	0637.100.510		UNION SCREW	1					
	60	2094.236.002		TUBE	1					
	70	0634.306.186		O-RING	1			12X1,5		

# Plant

Page 1 from 2

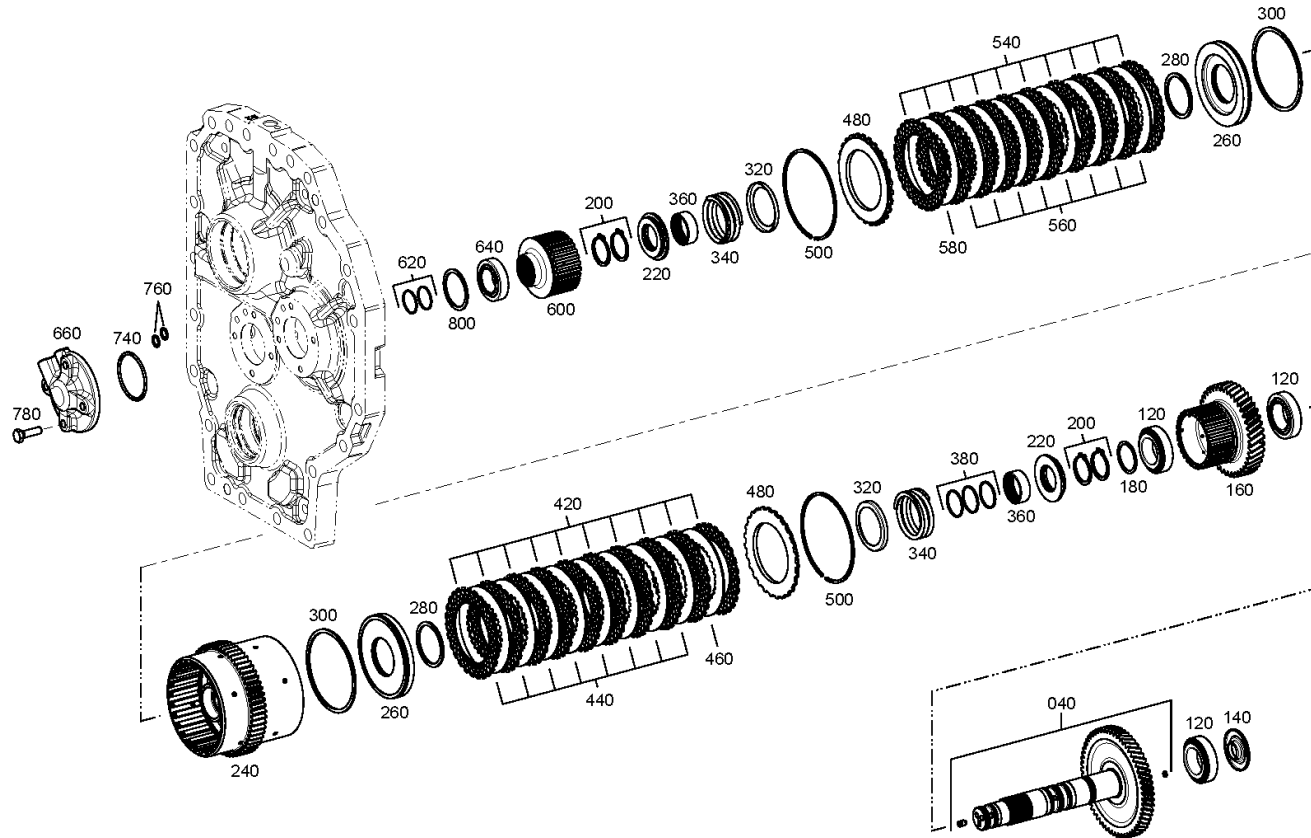
Material number: 2094.011.003

Plant: 209415900901

LASTSCHALTGR



T 7334 /  
LASTSCHALTGR



# Plant

Page 2 from 2

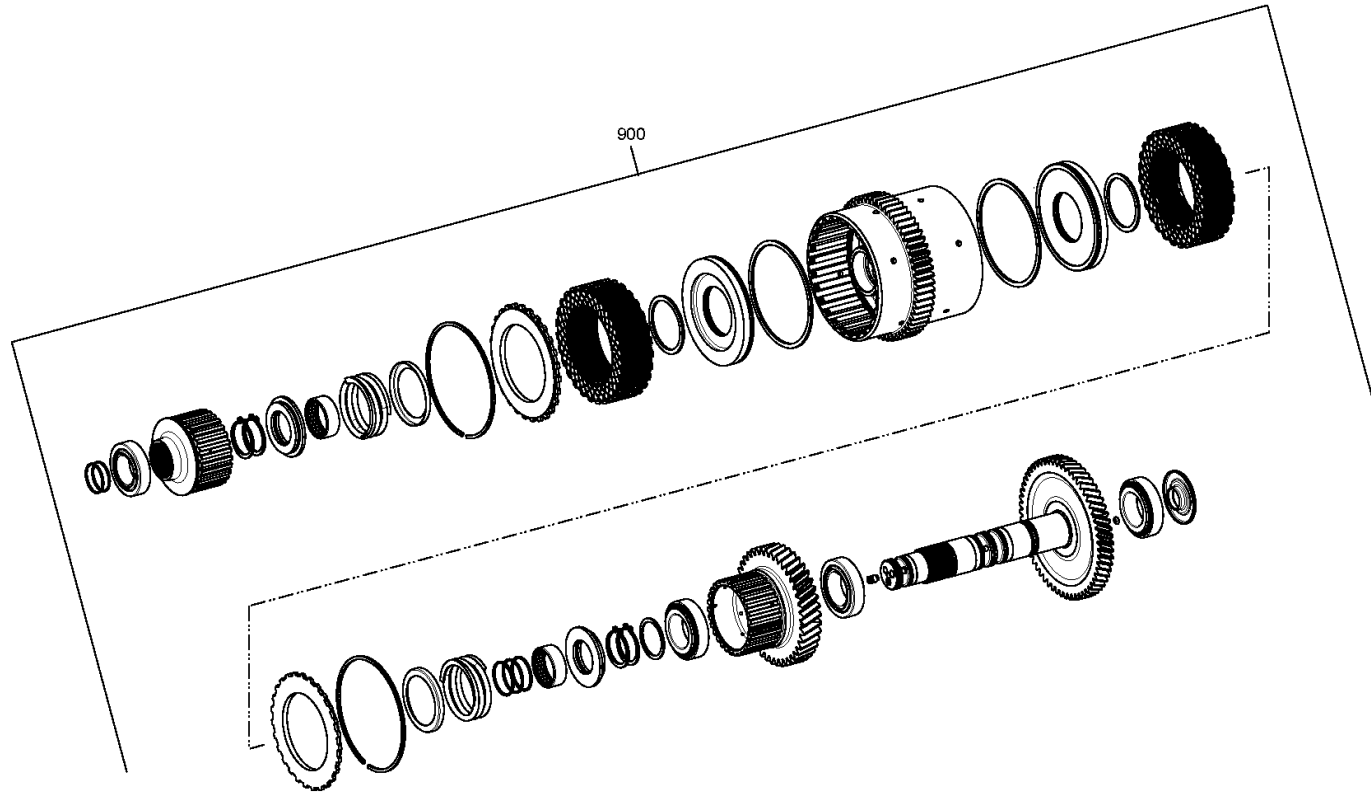
Material number: 2094.011.003

Plant: 209415900902

LASTSCHALTGR



T 7334 /  
LASTSCHALTGR



# Parts list

Page 1 from 4



T 7334 /

Material number: 2094.011.003

Plant: 209415900901

Material-assembly-group-no: 2094.159.009

	Pos.	Material number	Customer material	Name	Quantity	ME	Amend. no.	Techn. Info.	Rep kit	Alternative material
	40	2094.298.036		INTERMEDIATE SHAFT	1					
	40	2094.359.071		INTERMEDIATE SHAFT			K00123/0510	Z=58*Z=30		2094.298.036
	120	0750.117.656		TAPER ROLLER BEARING	3			40,000X68,000X19,000		
	140	2094.359.014		OIL BAFFLE	1					
	160	2094.359.048		SPUR GEAR	1			Z=41		
	180	---		SHIM	1					
	---	0730.111.645		SHIM	1			A=1,25		
	---	0730.107.829		SHIM	1			A=1,40 IN 0730 107 825(2)		
	---	0730.107.833		SHIM	1			A=1,60 IN 0730 107 825(2)		
	---	0730.107.837		SHIM	1			A=1,80 IN 0730 107 825(2)		
	---	0730.107.826		SHIM	1			S=1,0		
	---	0730.107.827		SHIM	1			S=1,3		
	---	0730.110.527		SHIM	1			S=1,325		
	---	0730.107.828		SHIM	1			S=1,35		
	---	0730.110.528		SHIM	1			S=1,375		
	---	0730.110.529		SHIM	1			S=1,425		
	---	0730.107.830		SHIM	1			S=1,45		
	---	0730.109.572		SHIM	1			S=1,475		
	---	0730.107.831		SHIM	1			S=1,5		
	---	0730.109.573		SHIM	1			S=1,525		
	---	0730.107.832		SHIM	1			S=1,55		
	---	0730.109.574		SHIM	1			S=1,575		
	---	0730.109.575		SHIM	1			S=1,625		
	---	0730.107.834		SHIM	1			S=1,65		
	---	0730.109.576		SHIM	1			S=1,675		
	---	0730.107.835		SHIM	1			S=1,7		
	---	0730.109.577		SHIM	1			S=1,725		
	---	0730.107.836		SHIM	1			S=1,75		
	---	0730.109.578		SHIM	1			S=1,775		
	---	0730.109.579		SHIM	1			S=1,825		
	---	0730.109.580		SHIM	1			S=1,85		
	200	0501.314.965		RETAINING RING	4					
	220	0735.298.130		NEEDLE BEARING	2			40,0X70,0X10,0		
	240	2094.259.028		DISC CARRIER	1			Z=59		

# Parts list

Page 2 from 4



T 7334 /

Material number: 2094.011.003

Plant: 209415900901

Material-assembly-group-no: 2094.159.009

	Pos.	Material number	Customer material	Name	Quantity	ME	Amend. no.	Techn. Info.	Rep kit	Alternative material
🛒	260	2094.359.004		PISTON	2					
🛒	280	0501.338.223		PROFILE SEALING RING	2			60X71,4X2,5		
🛒	300	0501.338.224		PROFILE SEALING RING	2			109X120,4X2,5		
🛒	320	4642.308.083		GUIDE RING	2					
🛒	340	0732.041.183		COMPRESSION SPRING	2					
🛒	360	0750.115.365		NEEDLE SLEEVE	2			40,000X47,000X16,000		
🛒	380	0634.402.541		R-RING	3			40X2		
🛒	420	0501.313.598		OUTER CLUTCH DISK	10			D=137.5		
🛒	440	4642.308.332		INNER CLUTCH DISK	8			S=2,0 Z=29		
	460	---		INNER CLUTCH DISK	1					
🛒	---	4642.308.330		INNER CLUTCH DISK	1		K00292/9510	S=1,5 Z=29		
🛒	---	4642.308.332		INNER CLUTCH DISK	1			S=2,0 Z=29		
🛒	---	4642.308.331		INNER CLUTCH DISK	1			S=2,5 Z=29		
🛒	480	4642.308.185		END SHIM	2					
🛒	500	0730.513.502		SNAP RING	2		K00058/9910	A=2,50		
🛒	540	0501.313.598		OUTER CLUTCH DISK	10			D=137.5		
🛒	560	4642.308.332		INNER CLUTCH DISK	8			S=2,0 Z=29		
	580	---		INNER CLUTCH DISK	1					
🛒	---	4642.308.330		INNER CLUTCH DISK	1		K00292/9510	S=1,5 Z=29		
🛒	---	4642.308.332		INNER CLUTCH DISK	1			S=2,0 Z=29		
🛒	---	4642.308.331		INNER CLUTCH DISK	1			S=2,5 Z=29		
🛒	600	2094.359.011		INNER DISK CARRIER	1					
🛒	620	0634.402.540		R-RING	2			35X2		
🛒	640	0750.117.503		TAPER ROLLER BEARING	1			35,000X62,000X18,000		
🛒	660	2094.259.007		COVER	1					
🛒	740	0634.303.303		O-RING	1			62X4		
🛒	760	0634.303.085		O-RING	2			12X3		
🛒	780	0636.015.129		HEXAGON SCREW	4			M10X35		
	800	---		SHIM	1					
🛒	---	0730.111.834		SHIM	1			A=1,05		
🛒	---	0730.111.835		SHIM	1			A=1,10		
🛒	---	0730.111.836		SHIM	1			A=1,15		
🛒	---	0730.106.657		SHIM	1			A=1,20		
🛒	---	0730.106.658		SHIM	1			A=1,25		

# Parts list

Page 3 from 4



T 7334 /

Material number: 2094.011.003

Plant: 209415900901

Material-assembly-group-no: 2094.159.009

	Pos.	Material number	Customer material	Name	Quantity	ME	Amend. no.	Techn. Info.	Rep kit	Alternative material
🛒	---	0730.101.078		SHIM	1			A=1,30		
🛒	---	0730.106.659		SHIM	1			A=1,35		
🛒	---	0730.103.474		SHIM	1			A=1,40		
🛒	---	0730.106.660		SHIM	1			A=1,45		
🛒	---	0730.101.077		SHIM	1			A=1,50		
🛒	---	0730.106.661		SHIM	1			A=1,55		
🛒	---	0730.103.473		SHIM	1			A=1,60		
🛒	---	0730.106.662		SHIM	1			A=1,65		
🛒	---	0730.101.076		SHIM	1			A=1,70		
🛒	---	0730.111.797		SHIM	1			A=1,72		
🛒	---	0730.111.798		SHIM	1			A=1,74		
🛒	---	0730.106.663		SHIM	1			A=1,75		
🛒	---	0730.111.799		SHIM	1			A=1,76		
🛒	---	0730.111.800		SHIM	1			A=1,78		
🛒	---	0730.101.461		SHIM	1			A=1,80		
🛒	---	0730.111.801		SHIM	1			A=1,82		
🛒	---	0730.111.802		SHIM	1			A=1,84		
🛒	---	0730.107.518		SHIM	1			A=1,85		
🛒	---	0730.111.803		SHIM	1			A=1,86		
🛒	---	0730.111.804		SHIM	1			A=1,88		
🛒	---	0730.101.075		SHIM	1			A=1,90		
🛒	---	0730.111.805		SHIM	1			A=1,92		
🛒	---	0730.111.806		SHIM	1			A=1,94		
🛒	---	0730.107.519		SHIM	1			A=1,95		
🛒	---	0730.111.807		SHIM	1			A=1,96		
🛒	---	0730.111.808		SHIM	1			A=1,98		
🛒	---	0730.101.462		SHIM	1			A=2,00		
🛒	---	0730.111.809		SHIM	1			A=2,02		
🛒	---	0730.111.810		SHIM	1			A=2,04		
🛒	---	0730.107.520		SHIM	1			A=2,05		
🛒	---	0730.111.811		SHIM	1			A=2,06		
🛒	---	0730.111.812		SHIM	1			A=2,08		
🛒	---	0730.101.074		SHIM	1			A=2,10		
🛒	---	0730.107.521		SHIM	1			A=2,15		

# Parts list

Page 4 from 4

Material number: 2094.011.003

Plant: 209415900901

Material-assembly-group-no: 2094.159.009



T 7334 /

	Pos.	Material number	Customer material	Name	Quantity	ME	Amend. no.	Techn. Info.	Rep kit	Alternative material
	---	0730.103.010		SHIM	1			A=2,20		
	---	0730.107.522		SHIM	1			A=2,25		
	---	0730.101.073		SHIM	1			A=2,30		
	---	0730.109.610		SHIM	1			A=2,35		
	---	0730.109.611		SHIM	1			A=2,40		
	---	0730.109.612		SHIM	1			A=2,45		
	---	0730.109.613		SHIM	1			A=2,50		



# Plant

Page 1 from 2

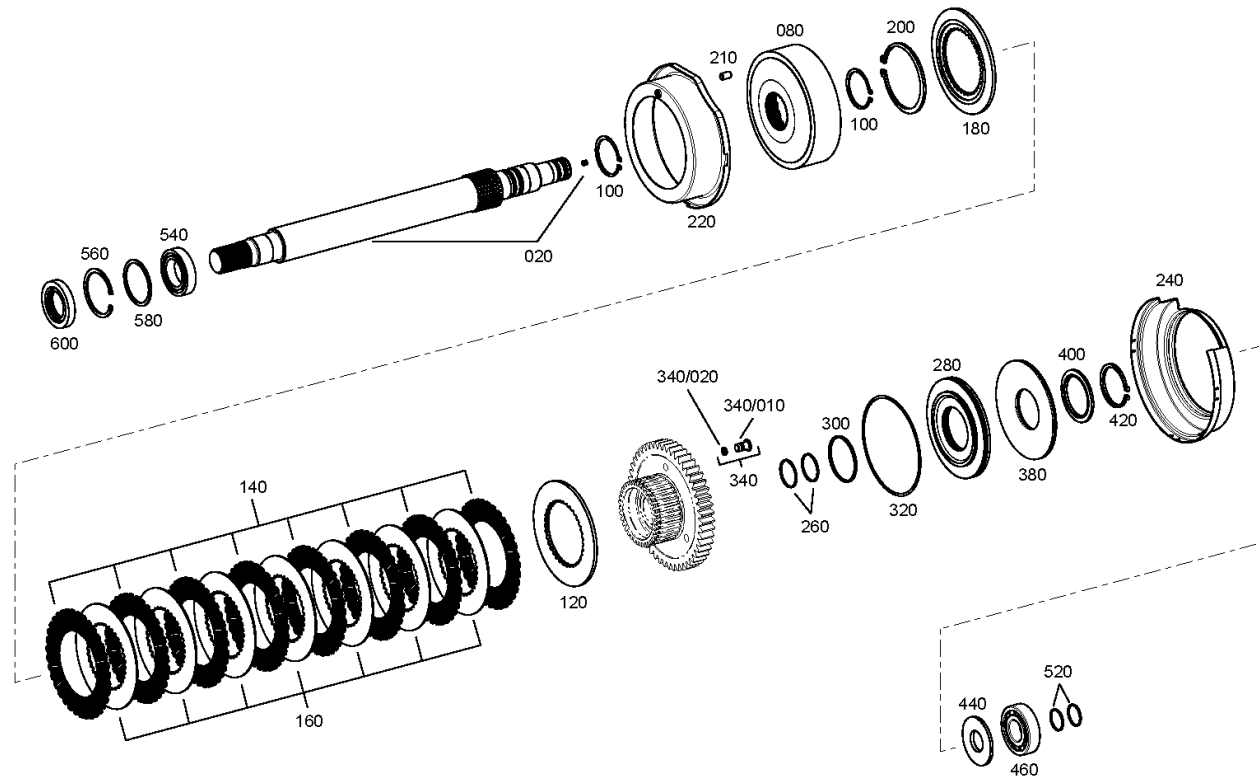
Material number: 2094.011.003

Plant: 209414601000

Material-assembly-group-no: 2094.146.010



T 7334 /  
FRONT WH.DRIVE



# Plant

Page 2 from 2

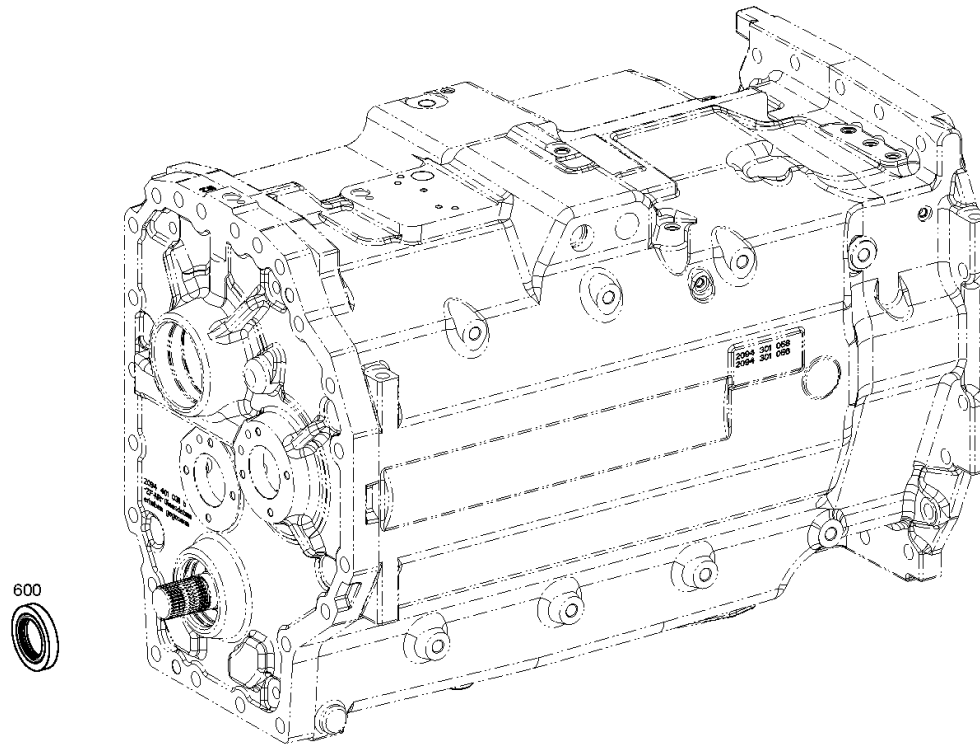
Material number: 2094.011.003

Plant: 209414601080

Material-assembly-group-no: 2094.146.010



T 7334 /  
FRONT WH.DRIVE



# Parts list

Page 1 from 2



T 7334 /

Material number: 2094.011.003

Plant: 209414601000

Material-assembly-group-no: 2094.146.010

	Pos.	Material number	Customer material	Name	Quantity	ME	Amend. no.	Techn. Info.	Rep kit	Alternative material
	20	2094.246.019		OUTPUT SHAFT	1					
	20	2094.346.055		OUTPUT SHAFT				Z=28*Z=30		2094.246.019
	80	2094.346.002		CLUTCH BELL HOUSING	1					
	100	0630.501.041		RETAINING RING	2			60X2		
	120	---		WASHER	1					
	---	2099.346.017		WASHER	1			h=6,55*Z=35		
	---	2099.346.016		WASHER	1			h=7,00*Z=35		
	---	2099.346.018		WASHER	1			h=7,45*Z=35		
	---	2099.346.019		WASHER	1			h=7,90*Z=35		
	---	2099.346.031		WASHER	1			h=8,35*Z=35		
	140	2094.246.014		OUTER CLUTCH DISK	8					
	160	4644.308.329		INNER CLUTCH DISK	7					
	180	2094.346.009		END SHIM	1			Z=35		
	200	0630.501.345		RETAINING RING	1			107X4		
	210	0631.330.015		SPRING PIN	1		Z00015284910	10X16		
	220	2094.346.013		SCREEN SHEET	1					
	240	2094.346.014		SCREEN SHEET	1					
	260	0634.402.118		R-RING	2			45X2		
	280	2094.346.100		PISTON	1		Z00015507310			
	300	0634.313.067		O-RING	1		Z00015507310	70X3		
	320	0634.313.250		O-RING	1		Z00015507310	156X3		
	340	2094.246.018		PRESSURE PIN	3			KOMPLETTIERUNG		
	/10	2094.346.039		PIN	1					
	/20	0634.313.507		O-RING	1			7X2,5		
	380	0501.314.521		SET OF SPRINGS	1					
	400	0730.107.794		WASHER	1			65,100X85,000X4,500		
	420	0630.531.080		RETAINING RING	1			65X4		
	440	0730.107.679		WASHER	1					
	460	0635.416.038		CYLINDER ROLLER BEARING	1			35X80X21		
	520	0634.402.540		R-RING	2			35X2		
	540	0750.116.233		BALL BEARING	1			45,0X75,0X16,0		
	560	0630.502.037		RETAINING RING	1			75X2,5		
	580	---		WASHER	1					

# Parts list

Page 2 from 2



T 7334 /

Material number: 2094.011.003

Plant: 209414601000

Material-assembly-group-no: 2094.146.010

	Pos.	Material number	Customer material	Name	Quantity	ME	Amend. no.	Techn. Info.	Rep kit	Alternative material
	---	0730.108.450		WASHER	1			A=2,30 IN 0730 108 448(2)		
	---	0730.111.959		WASHER	1			S=2,0		
	---	0730.111.960		WASHER	1			S=2,05		
	---	0730.111.961		WASHER	1			S=2,1		
	---	0730.111.962		WASHER	1			S=2,15		
	---	0730.108.449		WASHER	1			S=2,2		
	---	0730.111.963		WASHER	1			S=2,25		
	---	0730.111.964		WASHER	1			S=2,35		
	---	0730.108.451		WASHER	1			S=2,4		
	---	0730.111.965		WASHER	1			S=2,45		
	---	0730.108.537		WASHER	1			S=2,5		
	---	0730.111.966		WASHER	1			S=2,55		
	---	0730.108.538		WASHER	1			S=2,6		
	---	0730.111.967		WASHER	1			S=2,65		
	---	0730.109.587		WASHER	1			S=2,7		
	---	0730.109.588		WASHER	1			S=2,8		
	---	0730.109.999		WASHER	1			S=2,9		
	---	0730.110.001		WASHER	1			S=3,0		
	---	0730.110.002		WASHER	1			S=3,1		
	---	0730.110.003		WASHER	1			S=3,2		
	---	0730.301.910		WASHER	1			s=1,70		
	---	0730.301.911		WASHER	1			s=1,80		
	---	0730.301.912		WASHER	1			s=1,90		
	600	0734.300.573		SHAFT SEAL	1			45,000X76,000X12,000		

# Plant

Page 1 from 1

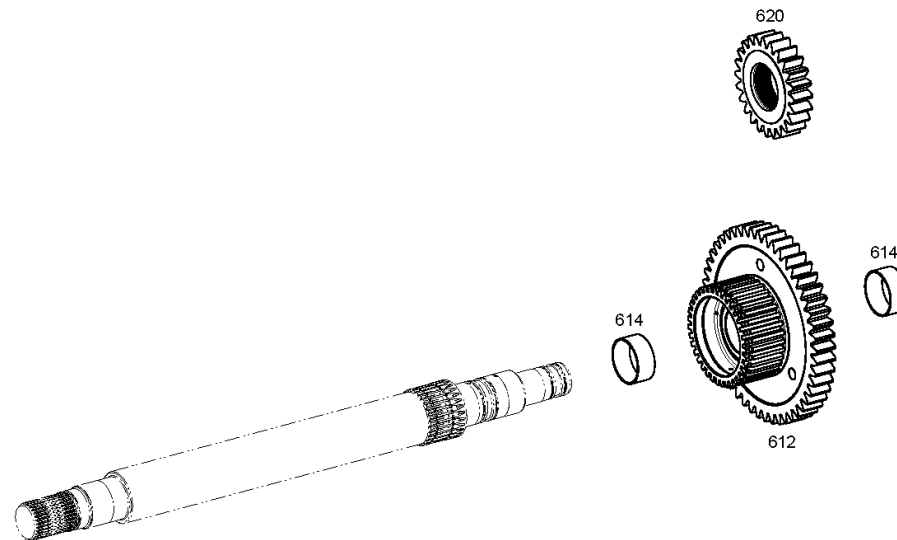
Material number: 2094.011.003

Plant: 209414641600

Material-assembly-group-no: 2094.146.416



T 7334 /  
FRONT WH.DRIVE



# Parts list

Page 1 from 1

Material number: 2094.011.003

Plant: 209414641600

Material-assembly-group-no: 2094.146.416



T 7334 /

	Pos.	Material number	Customer material	Name	Quantity	ME	Amend. no.	Techn. Info.	Rep kit	Alternative material
🛒	612	2094.346.101		GEAR	1			Z=46*Z=35		
🛒	614	0501.316.353		BUSH	2					
🛒	620	2094.304.088		GEAR	1			Z=28*Z=36		

# Plant

Page 1 from 1

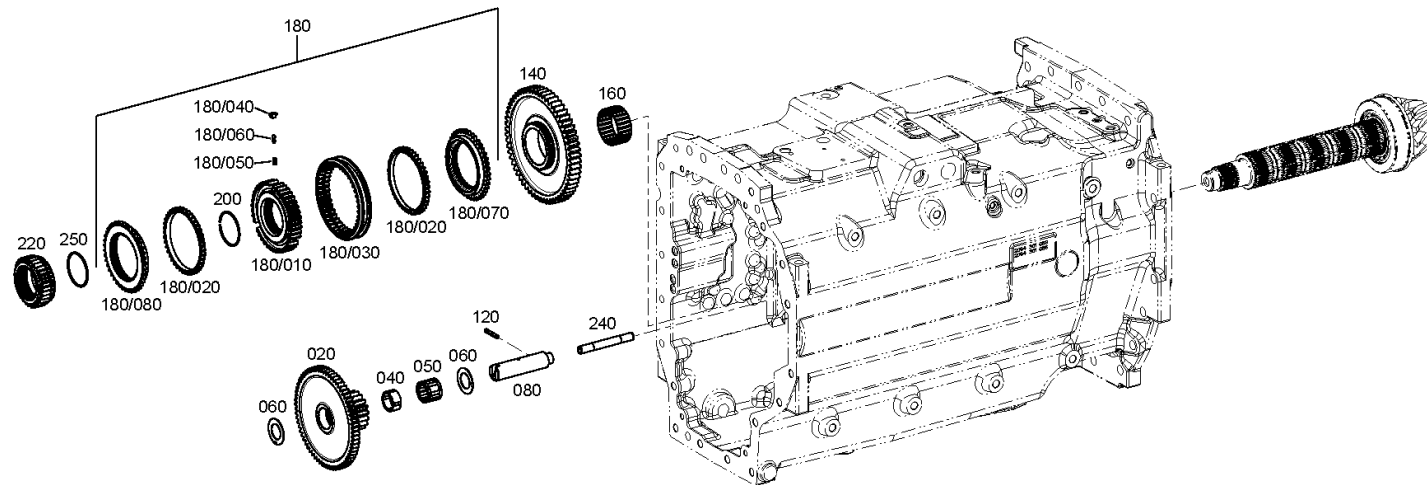
Material number: 2094.011.003

Plant: 209411400600

Material-assembly-group-no: 2094.114.006



T 7334 /  
CRAWLER



# Parts list

Page 1 from 1



T 7334 /

Material number: 2094.011.003

Plant: 209411400600

Material-assembly-group-no: 2094.114.006

	Pos.	Material number	Customer material	Name	Quantity	ME	Amend. no.	Techn. Info.	Rep kit	Alternative material
	20	2094.314.020		DOUBLE GEAR	1					
	40	0750.115.357		NEEDLE CAGE	1			30X40X18		
	50	0735.320.114		NEEDLE CAGE	1			30,0X40,0X29,8		
	60	0730.102.047		THRUST WASHER	2					
	80	2094.314.013		PIN	1					
	120	0631.329.072		SPRING PIN	1			6X40		
	140	2094.314.019		GEAR	1			Z=44*Z=60		
	160	0750.115.359		NEEDLE CAGE	1			K 65X70X30 HA		
	180	0501.007.524		SYNCHRONIZER	1		K00580/0310			
	/10	0501.321.231		SYNCHRO.BODY	1					
	/20	0501.321.220		SYNCHRO.RING	2					
	/30	0501.322.128		SLIDING SLEEVE	1					
	/40	0501.321.222		PRESSURE PART	3					
	/50	0501.321.211		SPRING	3					
	/60	0501.321.223		BALL	3					
	/70	0501.321.230		CLUTCH BODY	1					
	/80	0501.321.232		CLUTCH BODY	1					
	200	0630.513.123		SNAP RING	1					
	220	2094.314.015		GEAR	1			Z=32		
	240	2094.314.007		TUBE	1					
	250	0630.513.123		SNAP RING	1					



# Plant

Page 1 from 1

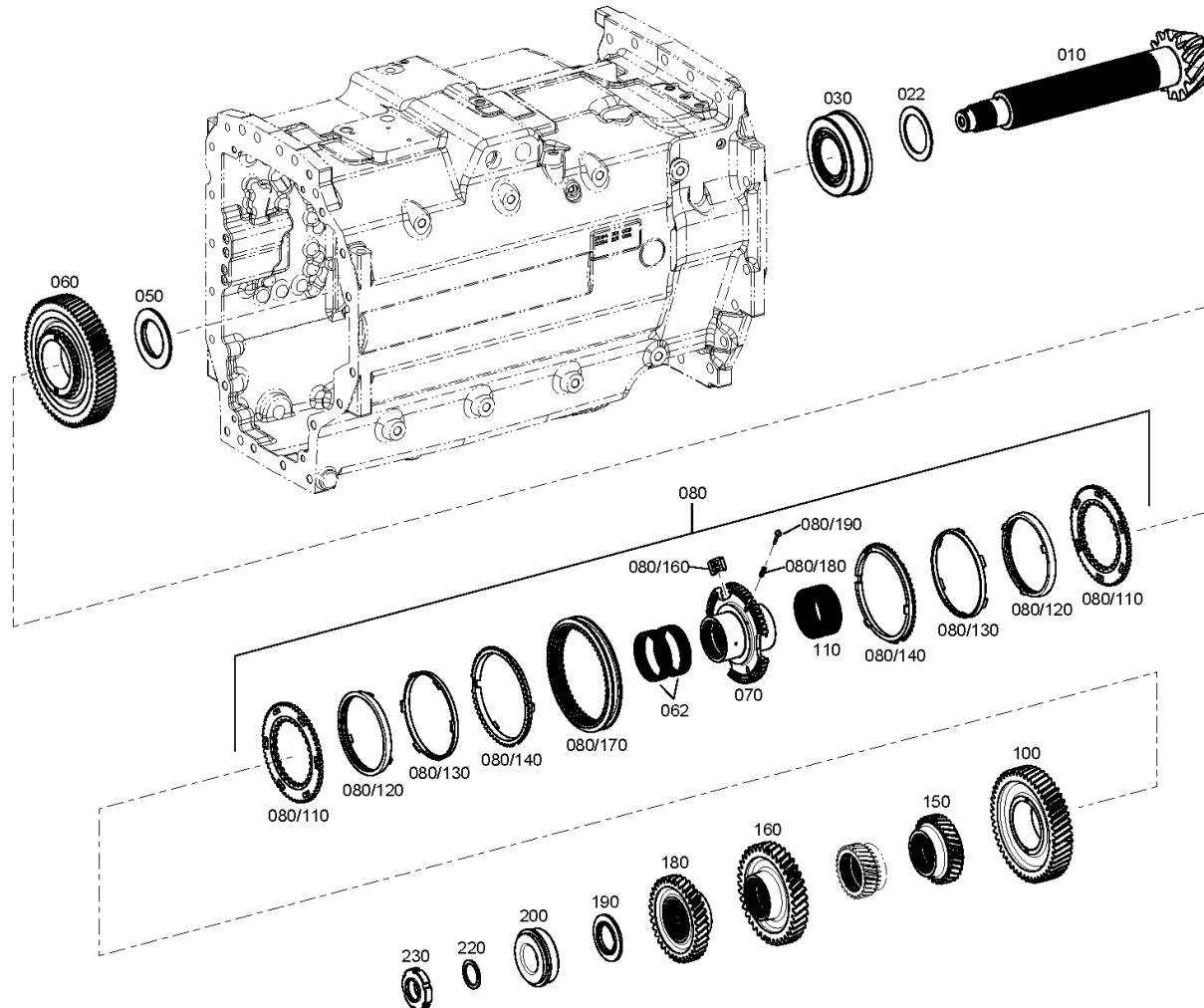
Material number: 2094.011.003

Plant: 209410401400

Material-assembly-group-no: 2094.104.014



T 7334 /  
MAIN SHAFT



# Parts list

Page 1 from 4



T 7334 /

Material number: 2094.011.003

Plant: 209410401400

Material-assembly-group-no: 2094.104.014

	Pos.	Material number	Customer material	Name	Quantity	ME	Amend. no.	Techn. Info.	Rep kit	Alternative material
	10	2094.304.082		MAIN SHAFT	1			Z=13		
	22	---		WASHER	1					
	---	0730.301.120		WASHER	1			S=2,75		
	---	0730.301.121		WASHER	1			S=2,80		
	---	0730.301.122		WASHER	1			S=2,85		
	---	0730.301.123		WASHER	1			S=2,90		
	---	0730.301.124		WASHER	1			S=2,925		
	---	0730.301.125		WASHER	1			S=2,95		
	---	0730.301.126		WASHER	1			S=2,975		
	---	0730.107.716		WASHER	1			S=3,00		
	---	0730.301.127		WASHER	1			S=3,025		
	---	0730.107.724		WASHER	1			S=3,05		
	---	0730.301.128		WASHER	1			S=3,075		
	---	0730.107.717		WASHER	1			S=3,10		
	---	0730.301.129		WASHER	1			S=3,125		
	---	0730.107.718		WASHER	1			S=3,15		
	---	0730.110.746		WASHER	1			S=3,175		
	---	0730.107.719		WASHER	1			S=3,20		
	---	0730.110.747		WASHER	1			S=3,225		
	---	0730.107.720		WASHER	1			S=3,25		
	---	0730.110.748		WASHER	1			S=3,275		
	---	0730.107.721		WASHER	1			S=3,30		
	---	0730.110.749		WASHER	1			S=3,325		
	---	0730.107.722		WASHER	1			S=3,35		
	---	0730.107.723		WASHER	1			S=3,40		
	---	0730.108.426		WASHER	1			S=3,45		
	---	0730.108.427		WASHER	1			S=3,50		
	---	0730.108.428		WASHER	1			S=3,55		
	---	0730.108.429		WASHER	1			S=3,60		
	30	0750.117.499		ROLLER BEARING	1			68,000X140,000X51,000		
	50	2094.304.038		THRUST WASHER	1					
	60	2094.304.062		GEAR	1			Z=69		
	62	0735.321.219		NEEDLE CAGE	2			80,0X86,0X20,0		
	70	6002.305.972		SYNCHRO.BODY	1					

# Parts list

Page 2 from 4



T 7334 /

Material number: 2094.011.003

Plant: 209410401400

Material-assembly-group-no: 2094.104.014

	Pos.	Material number	Customer material	Name	Quantity	ME	Amend. no.	Techn. Info.	Rep kit	Alternative material
	80	6002.199.025		SYNCHRONIZER	1			SYNCHRONTEILE*ZFD*155/148 *T7300*1+2G		
	/110	6002.305.893		CLUTCH DISC	2			ENTHALT.IN 1311 304 172(1)		
	/120	6002.306.082		INNER RING	2					
	/130	1311.304.078		INTERMEDIATE RING	2			ZF-D155/148 MO-MASS		
	/140	1311.304.024		OUTER RING	2			ENTHALT.IN 1311 304 170(1)		
	/160	1312.304.159		COUPLING ELEMENT	3		C01006892A10			
	/170	6002.305.973		SLIDING SLEEVE	1					
	/180	0732.040.409		COMPRESSION SPRING	3					
	/190	1297.304.436		PRESSURE PART	3					
	100	2094.304.063		GEAR	1			Z=51		
	110	0735.321.397		NEEDLE CAGE	1			80,000x86,000x40,000		
	150	2094.304.042		GEAR	1			Z=31		
	160	2094.304.064		GEAR	1			Z=38 3.Gang		
	180	2094.304.044		GEAR	1			Z=36		
	190	---		SHIM	1					
	---	0730.108.087		SHIM	1			S=7,10		
	---	0730.108.086		SHIM	1			S=7,20		
	---	0730.108.080		SHIM	1			S=7,30		
	---	0730.108.085		SHIM	1			S=7,40		
	---	0730.108.084		SHIM	1			S=7,50		
	---	0730.108.078		SHIM	1			S=7,60		
	---	0730.109.598		SHIM	1			S=7,65		
	---	0730.108.083		SHIM	1			S=7,70		
	---	0730.109.599		SHIM	1			S=7,75		
	---	0730.108.081		SHIM	1			S=7,80		
	---	0730.109.600		SHIM	1			S=7,85		
	---	0730.108.079		SHIM	1			S=7,90		
	---	0730.109.601		SHIM	1			S=7,95		
	---	0730.108.077		SHIM	1			S=8,00		
	---	0730.109.602		SHIM	1			S=8,05		
	---	0730.108.075		SHIM	1			S=8,10		
	---	0730.109.603		SHIM	1			S=8,15		
	---	0730.108.073		SHIM	1			S=8,20		

# Parts list

Page 3 from 4



T 7334 /

Material number: 2094.011.003

Plant: 209410401400

Material-assembly-group-no: 2094.104.014

	Pos.	Material number	Customer material	Name	Quantity	ME	Amend. no.	Techn. Info.	Rep kit	Alternative material
	---	0730.109.604		SHIM	1			S=8,25		
	---	0730.108.072		SHIM	1			S=8,30		
	---	0730.109.605		SHIM	1			S=8,35		
	---	0730.108.071		SHIM	1			S=8,40		
	---	0730.108.076		SHIM	1			S=8,50		
	---	0730.108.070		SHIM	1			S=8,60		
	---	0730.108.069		SHIM	1			S=8,70		
	---	0730.108.074		SHIM	1			S=8,80		
	---	0730.108.068		SHIM	1			S=8,90		
	---	0730.108.067		SHIM	1			S=9,00		
	200	0750.117.498		TAPER ROLLER BEARING	1			48,412X95,250X30,162		
	220	---		WASHER	1					
	---	0730.109.595		WASHER	1			H=2,650		
	---	0730.107.699		WASHER	1			h=2,000		
	---	0730.107.700		WASHER	1			h=2,100		
	---	0730.107.701		WASHER	1			h=2,200		
	---	0730.107.702		WASHER	1			h=2,300		
	---	0730.109.592		WASHER	1			h=2,350		
	---	0730.107.703		WASHER	1			h=2,400		
	---	0730.109.593		WASHER	1			h=2,450		
	---	0730.107.704		WASHER	1			h=2,500		
	---	0730.109.594		WASHER	1			h=2,550		
	---	0730.107.705		WASHER	1			h=2,600		
	---	0730.107.706		WASHER	1			h=2,700		
	---	0730.109.596		WASHER	1			h=2,750		
	---	0730.107.707		WASHER	1			h=2,800		
	---	0730.109.597		WASHER	1			h=2,850		
	---	0730.107.708		WASHER	1			h=2,900		
	---	0730.109.614		WASHER	1			h=2,950		
	---	0730.107.709		WASHER	1			h=3,000		
	---	0730.110.725		WASHER	1			h=3,050		
	---	0730.107.710		WASHER	1			h=3,100		
	---	0730.110.726		WASHER	1			h=3,150		
	---	0730.107.711		WASHER	1			h=3,200		

# Parts list

Page 4 from 4

Material number: 2094.011.003

Plant: 209410401400

Material-assembly-group-no: 2094.104.014



T 7334 /

	Pos.	Material number	Customer material	Name	Quantity	ME	Amend. no.	Techn. Info.	Rep kit	Alternative material
	---	0730.107.712		WASHER	1			h=3,300		
	---	0730.107.713		WASHER	1			h=3,400		
	---	0730.107.714		WASHER	1			h=3,500		
	230	0737.502.164		SLOTTED NUT	1					

# Plant

Page 1 from 1

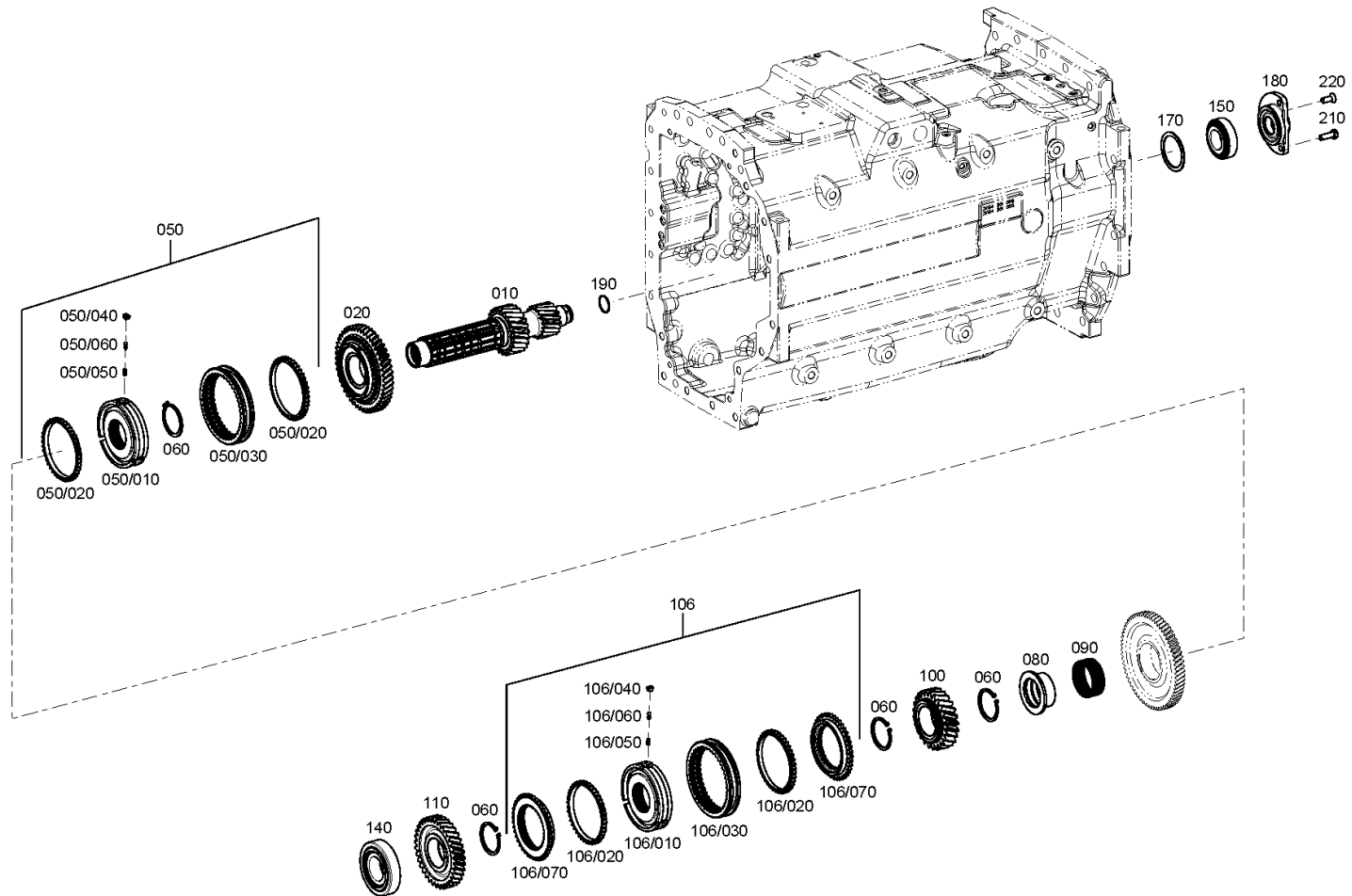
Material number: 2094.011.003

Plant: 209410301100

Material-assembly-group-no: 2094.103.011



T 7334 /  
COUNTERSHAFT



# Parts list

Page 1 from 2



T 7334 /

Material number: 2094.011.003

Plant: 209410301100

Material-assembly-group-no: 2094.103.011

	Pos.	Material number	Customer material	Name	Quantity	ME	Amend. no.	Techn. Info.	Rep kit	Alternative material
🛒	10	2094.303.065		COUNTERSHAFT	1			Z=18*Z=23*Z=14*Z=30		
🛒	20	2094.303.070		GEAR	1			Z=47		
🛒	50	0501.008.377		SYNCHRONIZER	1			114X46		
🛒	/10	0501.321.229		SYNCHRO.BODY	1					
🛒	/20	0501.321.220		SYNCHRO.RING	2					
🛒	/30	0501.325.496		SLIDING SLEEVE	1					
🛒	/40	0501.321.222		PRESSURE PART	3					
🛒	/50	0501.321.211		SPRING	3					
🛒	/60	0501.321.223		BALL	3					
🛒	60	0730.501.442		RETAINING RING	4			60X3		
	80	---		BUSH	1					
🛒	---	2094.303.047		SPLINED BUSH	1			L=33,05		
🛒	---	2094.303.044		SPLINED BUSH	1			L=33,1		
🛒	---	2094.303.045		SPLINED BUSH	1			L=33,2		
🛒	---	2094.303.046		SPLINED BUSH	1			L=33,3		
🛒	90	0750.115.081		NEEDLE CAGE	1			68X74X28		
🛒	100	2094.303.052		GEAR	1			Z=25		
🛒	106	0501.008.376		SYNCHRONIZER	1			114x46		
🛒	/10	0501.325.498		SYNCHRO.BODY	1					
🛒	/20	0501.321.220		SYNCHRO.RING	2					
🛒	/30	0501.325.496		SLIDING SLEEVE	1					
🛒	/40	0501.321.222		PRESSURE PART	3					
🛒	/50	0501.321.211		SPRING	3					
🛒	/60	0501.321.223		BALL	3					
🛒	/70	0501.321.230		CLUTCH BODY	2					
🛒	110	2094.303.041		GEAR	1			Z=35		
🛒	140	0750.117.588		ROLLER BEARING	1			50,000X110,000X29,250		
🛒	150	0735.371.521		TAPERED ROLLER BEARING	1		Z00020034210	40,000X80,000X24,750		
	170	---		SHIM	1					
🛒	---	1232.304.079		SHIM	1					
🛒	---	1232.304.056		SHIM	1			A=1,60 IN 1232 304 086(1)		
🛒	---	1232.304.057		SHIM	1			A=1,65 IN 1232 304 086(1)		
🛒	---	1232.304.049		SHIM	1			A=1,70 IN 1232 304 086(1)		
🛒	---	1232.304.058		SHIM	1			A=1,75 IN 1232 304 086(1)		

# Parts list

Page 2 from 2



T 7334 /

Material number: 2094.011.003

Plant: 209410301100

Material-assembly-group-no: 2094.103.011

	Pos.	Material number	Customer material	Name	Quantity	ME	Amend. no.	Techn. Info.	Rep kit	Alternative material
	---	1232.304.059		SHIM	1			A=1,80 IN 1232 304 086(1)		
	---	1232.304.073		SHIM	1			A=1,85 IN 1232 304 086(1)		
	---	1232.304.033		SHIM	1			A=1,90 IN 1232 304 086(1)		
	---	1232.304.074		SHIM	1			A=1,95 IN 1232 304 086(1)		
	---	1232.304.075		SHIM	1			A=2,00 IN 1232 304 086(1)		
	---	1232.304.076		SHIM	1			A=2,05 IN 1232 304 086(1)		
	---	1232.304.032		SHIM	1			A=2,10 IN 1232 304 086(1)		
	---	1232.304.077		SHIM	1			A=2,15 IN 1232 304 086(1)		
	---	1232.304.078		SHIM	1			A=2,20 IN 1232 304 086(1)		
	---	1232.304.080		SHIM	1			A=2,30 IN 1232 304 086(1)		
	---	1232.304.081		SHIM	1			A=2,35 IN 1232 304 086(1)		
	---	1232.304.061		SHIM	1			A=2,40 IN 1232 304 086(1)		
	---	1232.304.082		SHIM	1			A=2,45 IN 1232 304 086(1)		
	---	1232.304.083		SHIM	1			A=2,50 IN 1232 304 086(1)		
	---	1232.304.084		SHIM	1			A=2,55 IN 1232 304 086(1)		
	---	1232.304.085		SHIM	1			A=2,60 IN 1232 304 086(1)		
	---	0730.110.739		SHIM	1			S=1,725		
	---	0730.110.740		SHIM	1			S=1,775		
	---	0730.110.741		SHIM	1			S=1,875		
	---	0730.110.742		SHIM	1			S=1,925		
	---	0730.110.743		SHIM	1			S=1,975		
	180	2094.303.062		COVER	1					
	190	0634.402.540		R-RING	1			35X2		
	210	0636.015.304		HEXAGON SCREW	2			M10X32		
	220	0636.420.072		COUNTERSUNK SCREW	1			M10X30		



# Plant

Page 1 from 1

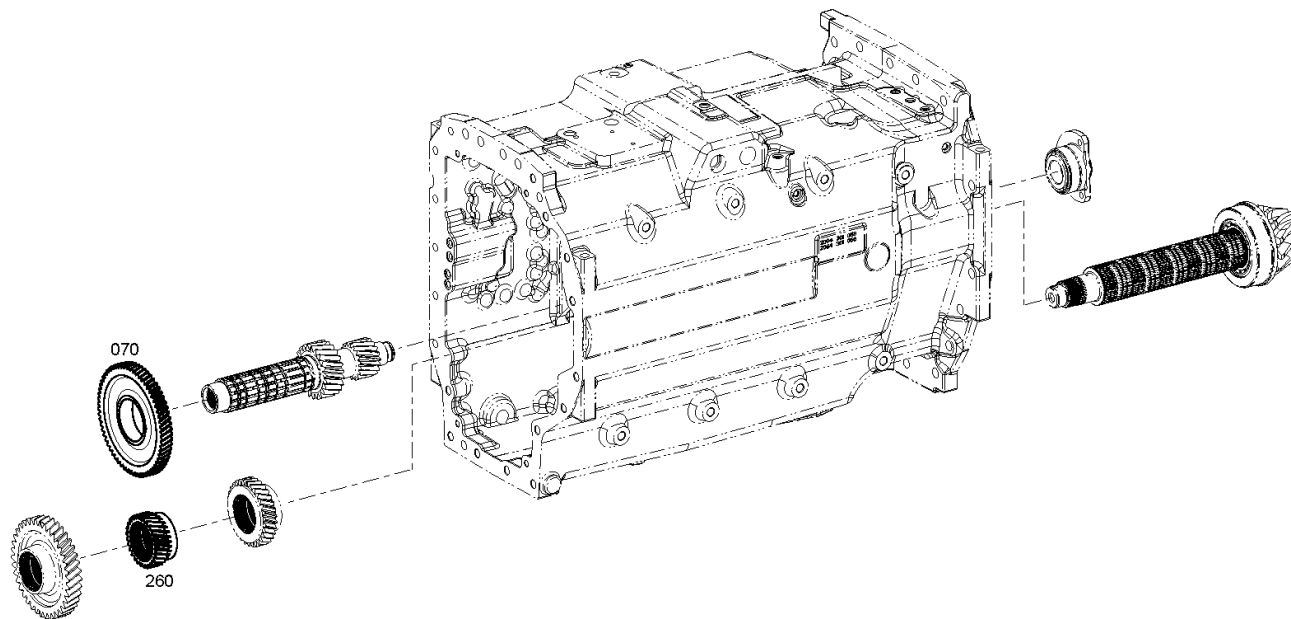
Material number: 2094.011.003

Plant: 209410340700

Material-assembly-group-no: 2094.103.407



T 7334 /  
COUNTERSHAFT



# Parts list

Page 1 from 1

Material number: 2094.011.003

Plant: 209410340700

Material-assembly-group-no: 2094.103.407



T 7334 /

	Pos.	Material number	Customer material	Name	Quantity	ME	Amend. no.	Techn. Info.	Rep kit	Alternative material
🛒	70	2094.303.071		GEAR	1			Z=65		
🛒	260	2094.304.070		GEAR	1			Z=53*Z=29		

# Plant

Page 1 from 2

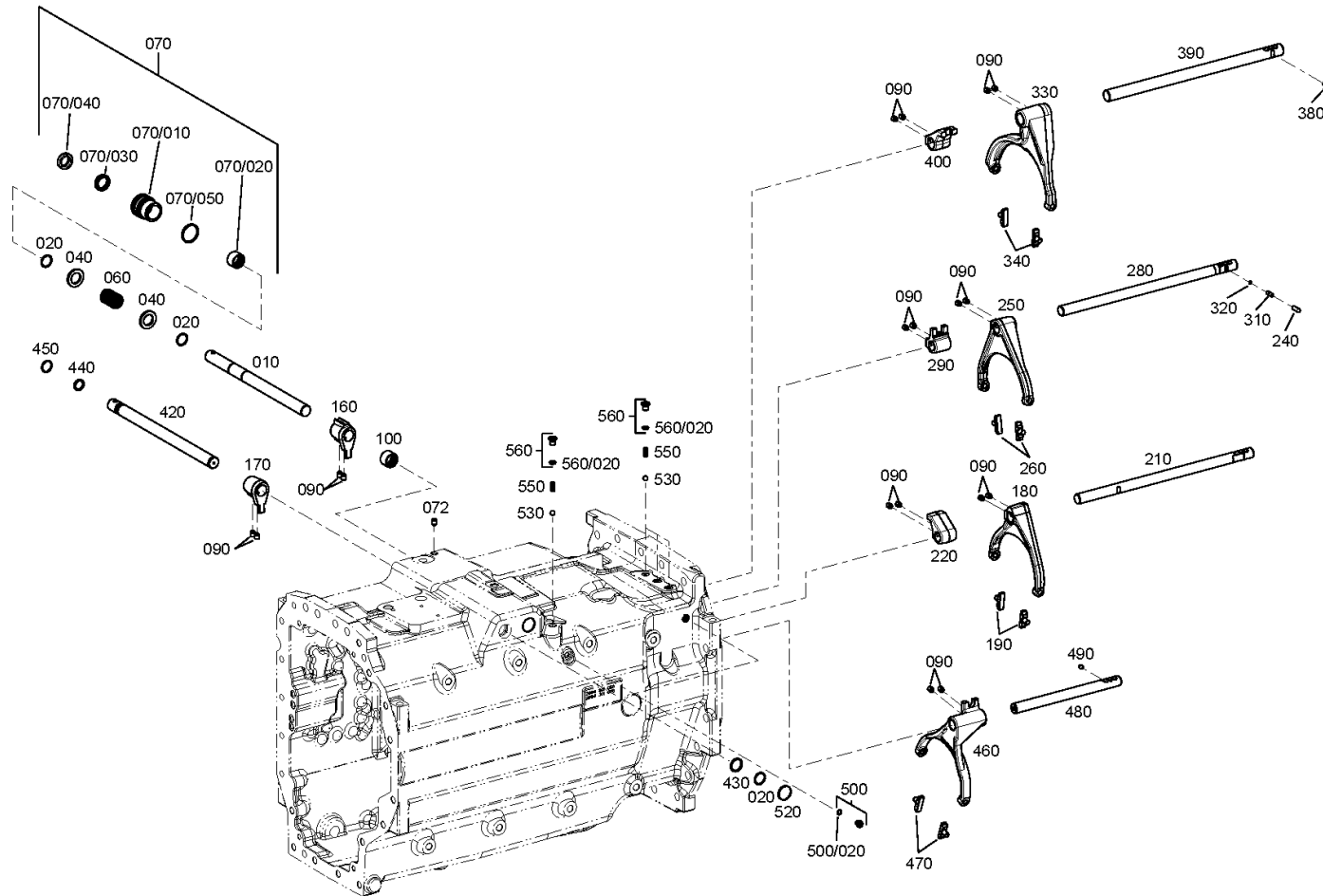
Material number: 2094.011.003

Plant: 209410601300

Material-assembly-group-no: 2094.106.013



T 7334 /  
SHIFT SYSTEM



# Plant

Page 2 from 2

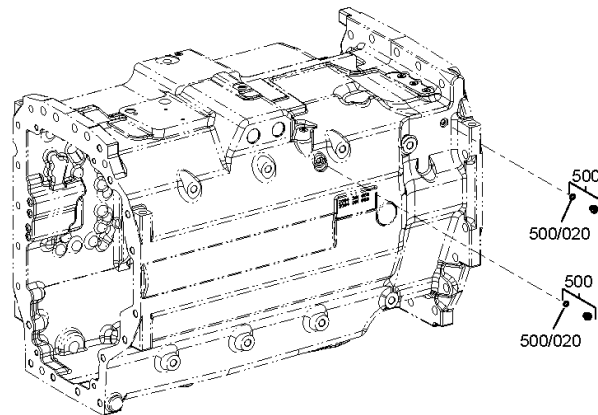
Material number: 2094.011.003

Plant: 209410601380

Material-assembly-group-no: 2094.106.013



T 7334 /  
SHIFT SYSTEM



# Parts list

Page 1 from 2



T 7334 /

Material number: 2094.011.003

Plant: 209410601300

Material-assembly-group-no: 2094.106.013

	Pos.	Material number	Customer material	Name	Quantity	ME	Amend. no.	Techn. Info.	Rep kit	Alternative material
🛒	10	2094.306.026		GEARSHIFT SHAFT	1					
🛒	20	0630.513.070		SNAP RING	3					
🛒	40	0730.008.369		WASHER	2					
🛒	60	0732.040.728		COMPRESSION SPRING	1					
🛒	70	2093.206.001		BUSH	1			KPL.		
🛒	/10	2094.306.014		BUSH	1					
🛒	/20	0635.303.053		NEEDLE SLEEVE	1			25X32X20		
🛒	/30	0634.301.303		SHAFT SEAL	1			25X35X7		
🛒	/40	0634.307.367		SCRAPER	1					
🛒	/50	0634.304.355		O-RING	1			37X3		
🛒	72	1238.306.065		SET SCREW	1			M10X1		
🛒	90	1238.306.065		SET SCREW	18			M10X1		
🛒	100	0635.303.053		NEEDLE SLEEVE	1			25X32X20		
🛒	160	2094.306.056		GEARSHIFT FINGER	1					
🛒	170	2094.306.036		GEARSHIFT FINGER	1					
🛒	180	2094.306.004		GEAR SHIFT FORK	1					
🛒	190	1290.306.066		SLIDING PAD	2					
🛒	210	2094.306.055		GEAR SHIFT RAIL	1					
🛒	220	2094.306.008		DRIVER	1					
🛒	240	0731.208.205		LOCKING PIN	1			A=25,9		
🛒	250	2094.306.003		GEAR SHIFT FORK	1					
🛒	260	1290.306.066		SLIDING PAD	2					
🛒	280	2094.306.046		GEAR SHIFT RAIL	1					
🛒	290	2094.306.007		DRIVER	1			A=4,2		
🛒	310	0731.201.193		LOCKING PIN	1					
🛒	320	0630.505.559		SNAP RING	1					
🛒	330	2094.306.029		GEAR SHIFT FORK	1					
🛒	340	1290.306.066		SLIDING PAD	2					
🛒	380	0731.208.225		LOCKING PIN	1			A=24,4		
🛒	390	2094.306.043		GEAR SHIFT RAIL	1					
🛒	400	2094.306.032		DRIVER	1					
🛒	420	2094.306.027		GEARSHIFT SHAFT	1					
🛒	430	0730.003.739		WASHER	1			B=2,00 IN 0730 003 738(2) B=2,000		
🛒	440	0634.303.199		O-RING	1			20X3		

# Parts list

Page 2 from 2



T 7334 /

Material number: 2094.011.003

Plant: 209410601300

Material-assembly-group-no: 2094.106.013

	Pos.	Material number	Customer material	Name	Quantity	ME	Amend. no.	Techn. Info.	Rep kit	Alternative material
🛒	450	0630.505.527		SNAP RING	1					
🛒	460	2094.306.038		GEAR SHIFT FORK	1					
🛒	470	1290.306.066		SLIDING PAD	2					
🛒	480	2094.306.024		GEAR SHIFT RAIL	1					
🛒	490	0731.208.206		LOCKING PIN	1			A=10,9		
🛒	500	4475.280.197		SCREW PLUG	2			M10X1 KPL.MIT O-RING		
🛒	/20	0634.303.280		O-RING	1			8X1,5		
🛒	520	0630.361.039		SEALING CAP	2					
🛒	530	0635.460.021		BALL	4			10		
🛒	550	0732.042.491		COMPRESSION SPRING	4					
🛒	560	4475.280.016		SCREW PLUG	4			M12X1,5 KPL.MIT O-RING		
🛒	/20	0634.303.144		O-RING	1			9,5X2		

# Plant

Page 1 from 2

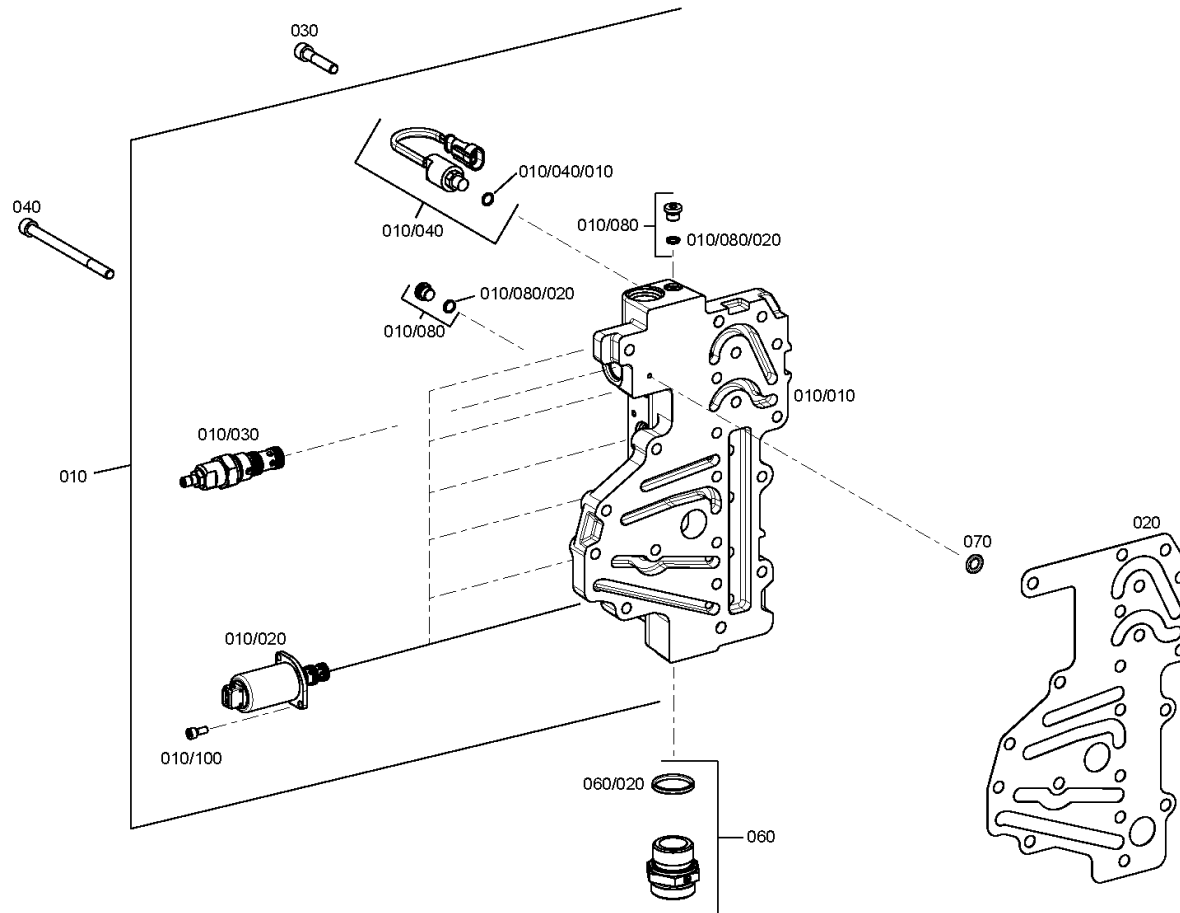
Material number: 2094.011.003

Plant: 209415201200

Material-assembly-group-no: 2094.152.012



T 7334 /  
HYDR.CONTROL



# Plant

Page 2 from 2

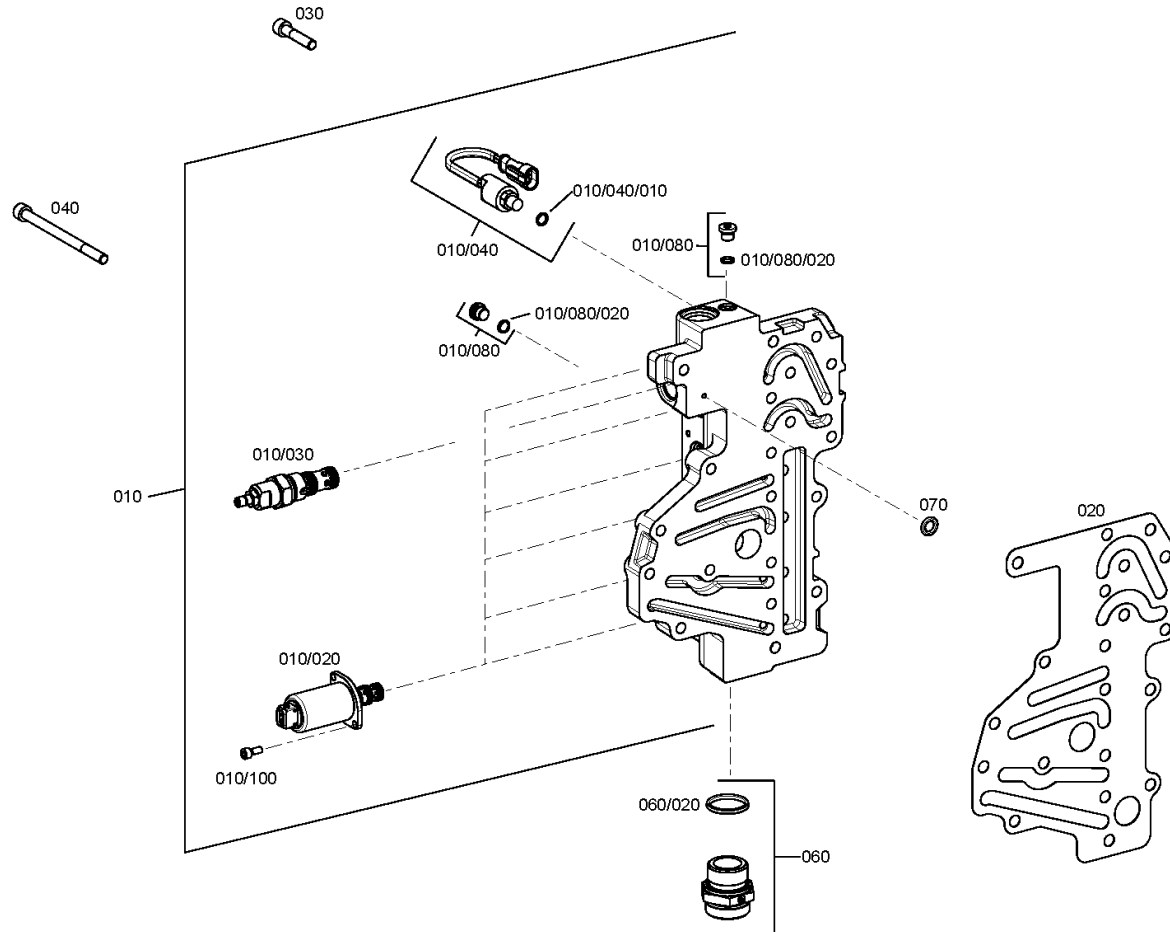
Material number: 2094.011.003

Plant: 209415201280

Material-assembly-group-no: 2094.152.012



T 7334 /  
HYDR.CONTROL





# Parts list

Page 1 from 1



T 7334 /

Material number: 2094.011.003

Plant: 209415201200

Material-assembly-group-no: 2094.152.012

	Pos.	Material number	Customer material	Name	Quantity	ME	Amend. no.	Techn. Info.	Rep kit	Alternative material
	10	2093.252.007		VALVE BLOCK	1					
	/10	2093.252.011		VALVE BLOCK	1					
	/100	0636.101.129		CAP SCREW	12			M5X12		
	/20	0501.327.426		PRESSURE REGULATOR	6			PDMC		
	/30	0501.216.756		PRESSURE LIMITATION VALVE	1					
	/40	0501.221.774		PRESSURE SWITCH	1					
	//10	0634.303.280		O-RING	1			8X1,5		
	/80	4475.280.197		SCREW PLUG	7			M10X1 KPL.MIT O-RING		
	//20	0634.303.280		O-RING	1			8X1,5		
	20	2093.352.124		GASKET	1		Z00034941910			
	30	0636.100.602		CAP SCREW	12			M8X40		
	40	0636.102.261		CAP SCREW	6			M8X115		
	60	4475.280.233		PIPE UNION	1					
	/20	0634.306.047		O-RING	1			30X3		
	70	0634.306.181		O-RING	1			10X3		

# Plant

Page 1 from 1

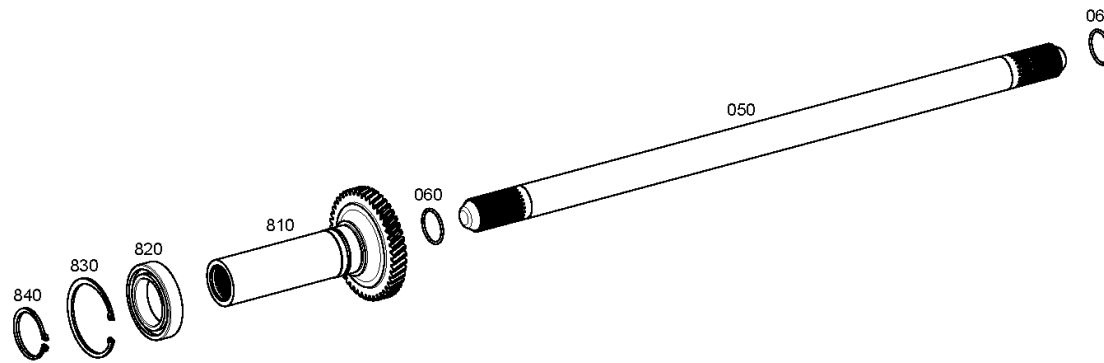
Material number: 2094.011.003

Plant: 209411001900

Material-assembly-group-no: 2094.110.019



T 7334 /  
P.T.O. SHAFT



# Parts list

Page 1 from 1

Material number: 2094.011.003

Plant: 209411001900

Material-assembly-group-no: 2094.110.019



T 7334 /

	Pos.	Material number	Customer material	Name	Quantity	ME	Amend. no.	Techn. Info.	Rep kit	Alternative material
	50	2094.310.133		SHAFT	1			Z=26		
	60	0630.505.535		SNAP RING	2					
	810	2094.310.121		SPUR GEAR	1			Z=48		
	820	0750.116.277		BALL BEARING	1			50,000X80,000X16,000		
	830	0630.502.039		RETAINING RING	1			80X2,5		
	840	0630.531.065		RETAINING RING	1			50X3		

# Plant

Page 1 from 1

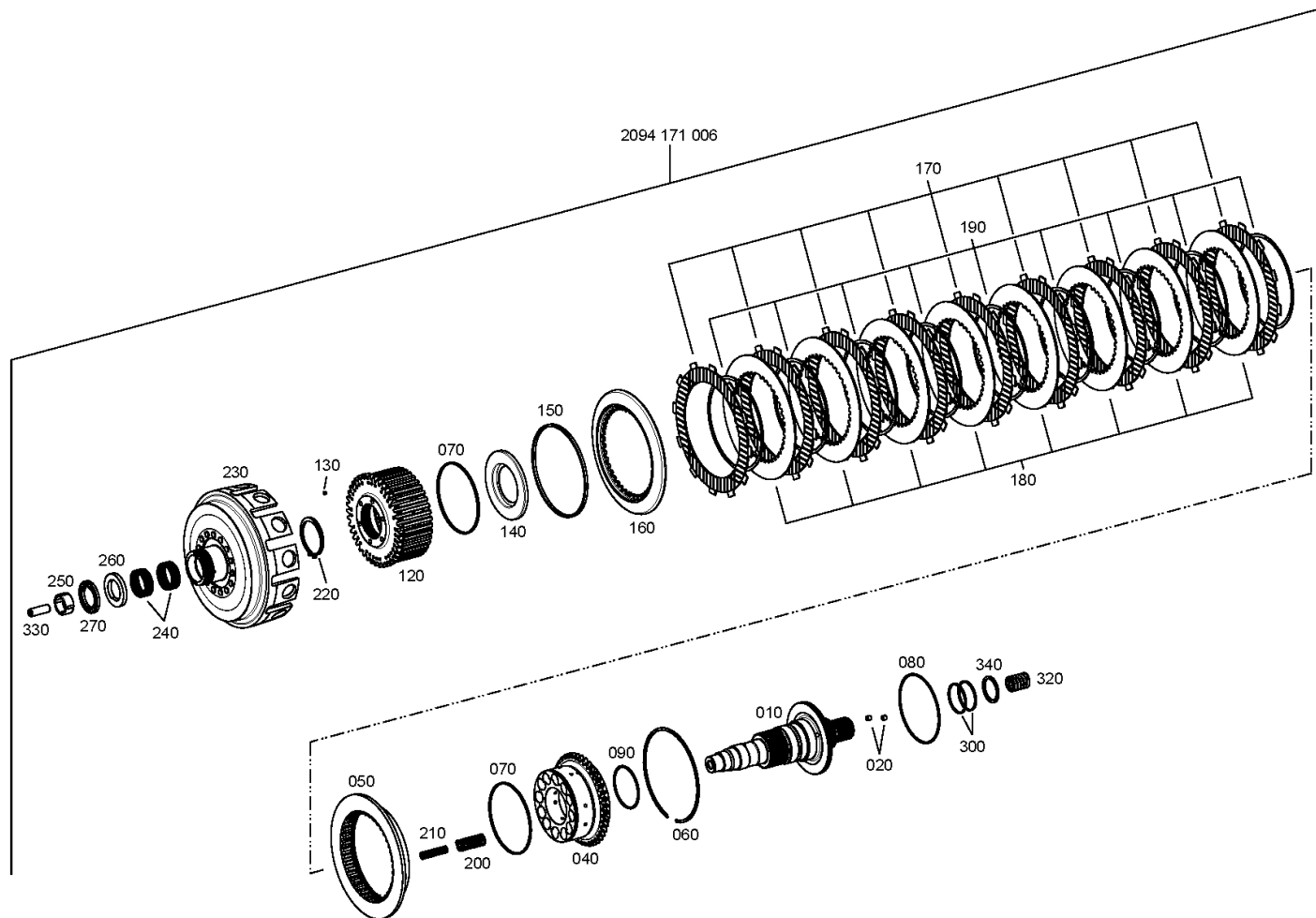
Material number: 2094.011.003

Plant: 209417100600

Material-assembly-group-no: 2094.171.006



T 7334 /  
MAIN CLUTCH



# Parts list

Page 1 from 3



T 7334 /

Material number: 2094.011.003

Plant: 209417100600

Material-assembly-group-no: 2094.171.006

	Pos.	Material number	Customer material	Name	Quantity	ME	Amend. no.	Techn. Info.	Rep kit	Alternative material
🛒	10	2094.371.012		CLUTCH SHAFT	1			Z=50*Z=30		
🛒	20	0631.610.020		SET SCREW	2			M8X8		
🛒	40	2094.371.011		PISTON	1			Z=41		
🛒	50	2094.371.010		PRESSURE PLATE	1			Z=41		
🛒	60	0630.513.169		SNAP RING	1					
🛒	70	0634.316.115		O-RING	2			128X3		
🛒	80	0634.313.972		O-RING	1			125X3		
🛒	90	0634.313.643		O-RING	1			75X3		
🛒	120	2094.371.003		DISC CARRIER	1			Z=41		
🛒	130	1043.333.128		SEALING CAP	33					
🛒	140	2094.371.005		SCREEN SHEET	1					
	150	---		WASHER	1					
🛒	---	0730.008.713		WASHER	1			A=3,2		
🛒	---	0730.008.714		WASHER	1			A=3,3		
🛒	---	0730.008.715		WASHER	1			A=3,4		
🛒	---	0730.008.716		WASHER	1			A=3,5		
🛒	---	0730.008.717		WASHER	1			A=3,6		
🛒	---	0730.008.718		WASHER	1			A=3,7		
🛒	---	0730.008.719		WASHER	1			A=3,8		
🛒	---	0730.008.720		WASHER	1			A=3,9		
🛒	---	0730.008.721		WASHER	1			A=4,0		
🛒	---	0730.008.722		WASHER	1			A=4,1		
🛒	---	0730.008.723		WASHER	1			A=4,2		
🛒	---	0730.008.724		WASHER	1			A=4,3		
🛒	---	0730.008.725		WASHER	1			A=4,4		
🛒	---	0730.008.726		WASHER	1			A=4,5		
🛒	---	0730.008.727		WASHER	1			A=4,6		
🛒	---	0730.008.728		WASHER	1			A=4,7		
🛒	---	0730.008.729		WASHER	1			A=4,8		
🛒	---	0730.008.730		WASHER	1			A=4,9		
🛒	---	0730.008.731		WASHER	1			A=5,0		
🛒	---	0730.008.732		WASHER	1			A=5,1		
🛒	---	0730.008.733		WASHER	1			A=5,2		
🛒	---	0730.008.734		WASHER	1			A=5,3		

# Parts list

Page 2 from 3



T 7334 /

Material number: 2094.011.003

Plant: 209417100600

Material-assembly-group-no: 2094.171.006

	Pos.	Material number	Customer material	Name	Quantity	ME	Amend. no.	Techn. Info.	Rep kit	Alternative material
	---	0730.008.735		WASHER	1			A=5,4		
	160	2094.371.008		END SHIM	1			z=41		
	170	0501.216.833		LINED CLUTCH DISK	9					
	180	0750.140.049		INNER CLUTCH DISK	8					
	190	0501.314.522		SPRING	9					
	200	0732.042.773		COMPRESSION SPRING	12					
	210	0732.042.686		COMPRESSION SPRING	12					
	220	0630.531.080		RETAINING RING	1			65X4		
	230	2094.271.002		CLUTCH BELL HOUSING	1					
	240	0750.115.360		NEEDLE CAGE	2			K 45X50X17		
	250	0750.115.357		NEEDLE CAGE	1			30X40X18		
	260	---		WASHER	1					
	---	0730.108.659		WASHER	1			A=6,3		
	---	0730.108.660		WASHER	1			A=6,4		
	---	0730.108.661		WASHER	1			A=6,5		
	---	0730.108.662		WASHER	1			A=6,6		
	---	0730.109.606		WASHER	1			A=6,65		
	---	0730.108.663		WASHER	1			A=6,7		
	---	0730.109.607		WASHER	1			A=6,75		
	---	0730.108.664		WASHER	1			A=6,8		
	---	0730.109.608		WASHER	1			A=6,85		
	---	0730.108.665		WASHER	1			A=6,9		
	---	0730.109.609		WASHER	1			A=6,95		
	---	0730.108.666		WASHER	1			A=7,0		
	---	0730.108.667		WASHER	1			A=7,1		
	---	0730.108.668		WASHER	1			A=7,2		
	---	0730.108.669		WASHER	1			A=7,3		
	---	0730.108.670		WASHER	1			A=7,4		
	270	0735.321.225		AXIAL ROLLER RING	1			40,000X60,000X6,000		
	300	0734.401.197		RECTANGULAR RING	2			52,0X56,0X2,5 FA.RIKEN		
	320	0732.041.323		COMPRESSION SPRING	1					
	330	2094.313.059		TUBE	1					
	340	---		WASHER	1					
	---	0730.113.666		WASHER	1			A=1,4		

# Parts list

Page 3 from 3



T 7334 /

Material number: 2094.011.003

Plant: 209417100600

Material-assembly-group-no: 2094.171.006

	Pos.	Material number	Customer material	Name	Quantity	ME	Amend. no.	Techn. Info.	Rep kit	Alternative material
	---	0730.113.667		WASHER	1			A=1,5		
	---	0730.104.377		WASHER	1			A=1,6		
	---	0730.111.646		WASHER	1			A=1,7		
	---	0730.111.647		WASHER	1			A=1,8		
	---	0730.104.378		WASHER	1			A=1,9		
	---	0730.111.648		WASHER	1			A=2,0		
	---	0730.111.649		WASHER	1			A=2,1		
	---	0730.104.379		WASHER	1			A=2,20		
	---	0730.111.650		WASHER	1			A=2,3		
	---	0730.111.651		WASHER	1			A=2,4		
	---	0730.104.380		WASHER	1			A=2,5		
	---	0730.111.652		WASHER	1			A=2,6		
	---	0730.111.653		WASHER	1			A=2,7		
	---	0730.104.381		WASHER	1			A=2,8		
	---	0730.111.654		WASHER	1			A=2,9		
	---	0730.111.655		WASHER	1			A=3,0		
	---	0730.104.382		WASHER	1			A=3,1		
	---	0730.111.656		WASHER	1			A=3,2		
	---	0730.104.383		WASHER	1			A=3,4		
	---	0730.104.384		WASHER	1			A=3,7		
	---	0730.104.385		WASHER	1			A=4,0		

# Plant

Page 1 from 1

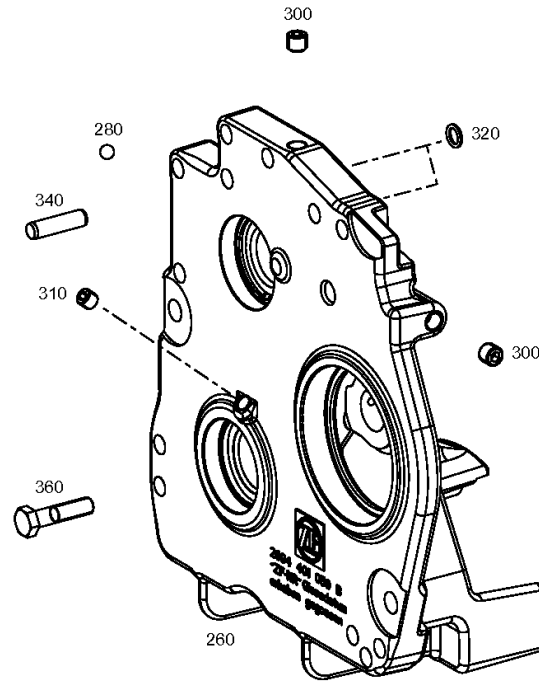
Material number: 2094.011.003

Plant: 209412401200

Material-assembly-group-no: 2094.124.012



T 7334 /  
CLOSING COMPONENTS





# Parts list

Page 1 from 1

Material number: 2094.011.003

Plant: 209412401200

Material-assembly-group-no: 2094.124.012



T 7334 /

	Pos.	Material number	Customer material	Name	Quantity	ME	Amend. no.	Techn. Info.	Rep kit	Alternative material
	260	2094.301.050		COVER	1					
	280	0635.460.021		BALL	8			10		
	300	0631.610.128		SET SCREW	3			M14X12		
	310	0631.610.013		SET SCREW	1			M12X10		
	320	0634.303.085		O-RING	2			12X3		
	340	0631.315.561		CYLINDRICAL PIN	2			12X45		
	360	0636.011.024		HEXAGON SCREW	10			M12X50		

# Assembly group overview

Page 1 from 1

Material number: 2097.080.004



T 7334 /

Graphics	Pos.	Material number	Name	Quantity	Amend. no.	Techn. Info.
209411701000	70	2094.117.010	REAR AXLE HOUS.	1		
209711100500	50	2097.111.005	OUTPUT	1		
209410900500	10	2094.109.005	DIFFERENTIAL	1		
209411002301	20	2094.110.023	P.T.O. SHAFT	1		
209714701300	200	2097.147.013	OIL SUPPLY	1		
209912400500	250	2099.124.005	BRAKE	1		
209912900200	260	2099.129.002	BRAKE SHAFT	1		
209714000300	130	2097.140.003	HOISTING UNIT	1		

# Plant

Page 1 from 1

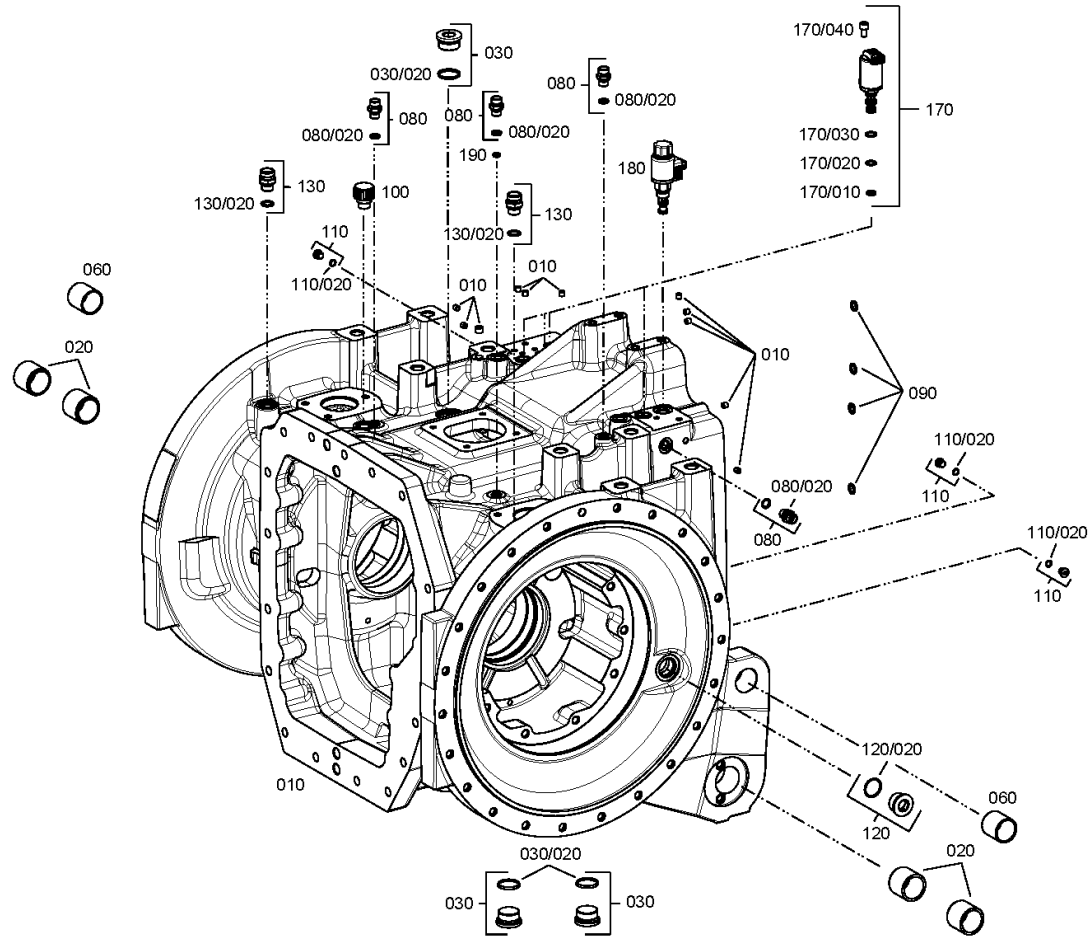
Material number: 2097.080.004

Plant: 209411701000

Material-assembly-group-no: 2094.117.010



T 7334 /  
REAR AXLE HOUS.



# Parts list

Page 1 from 1



T 7334 /

Material number: 2097.080.004

Plant: 209411701000

Material-assembly-group-no: 2094.117.010

	Pos.	Material number	Customer material	Name	Quantity	ME	Amend. no.	Techn. Info.	Rep kit	Alternative material
	10	2094.298.043		REAR AXLE HOUS.	1					
	10	2094.317.015		REAR AXLE HOUS.						2094.298.043
	20	5840.303.416		BUSH	4					
	30	4475.280.066		SCREW PLUG	3					
	/20	0634.303.312		O-RING	1			30X2,5		
	60	5838.300.209		BEARING BUSH	2					
	80	4475.280.047		SCREW-IN SLEEVE	4					
	/20	0634.306.010		O-RING	1			11,3X2,4		
	90	0634.303.074		O-RING	4			11X3		
	100	5838.300.211		BREATHER	1					
	110	4475.280.197		SCREW PLUG	3			M10X1 KPL.MIT O-RING		
	/20	0634.303.280		O-RING	1			8X1,5		
	120	4475.280.023		SCREW PLUG	1			M30X1,5 KPL.MIT O-RING		
	/20	0634.304.275		O-RING	1			27X2		
	130	4475.280.213		CONNECTING SOCKET	2					
	/20	0634.316.015		O-RING	1			15,3X2,4		
	170	0501.325.280		SOLENOID VALVE	4					
	/10	0501.327.379		O-RING	1			11,2X1,8/27310111016384		
	/20	0501.327.378		O-RING	1			12,4X1,78/273111017012		
	/30	0501.327.380		O-RING	1			14X1,78/273111014178		
	/40	0501.327.381		SCREW	1			M8X16/309543008016		
	180	0501.324.502		PRESSURE REGULATOR	1					
	190	0730.361.146		SEALING CAP	1			D=2,00 IN 0730 361 105(2)		

# Plant

Page 1 from 1

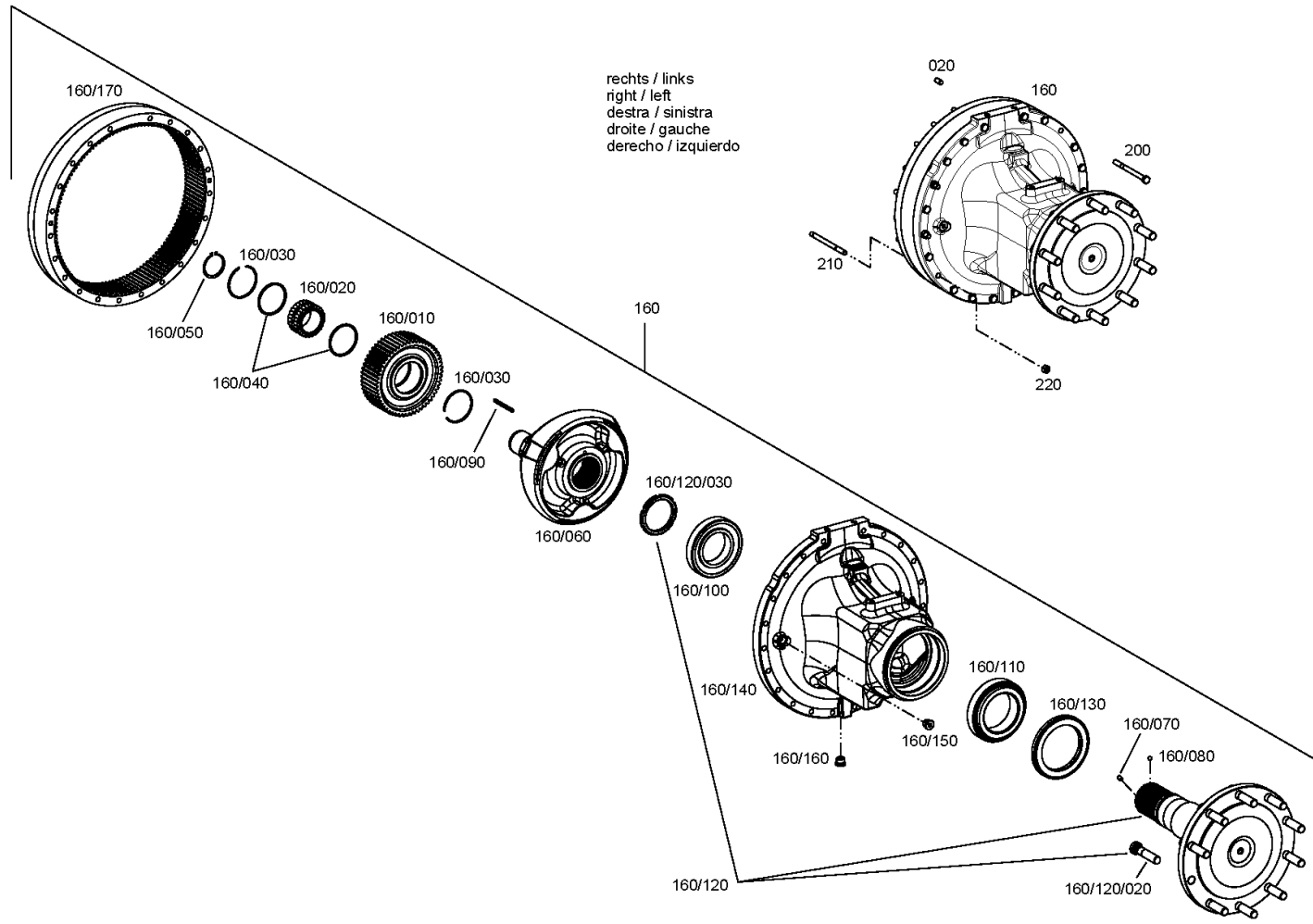
Material number: 2097.080.004

Plant: 209711100500

Material-assembly-group-no: 2097.111.005



T 7334 /  
OUTPUT



# Parts list

Page 1 from 1



T 7334 /

Material number: 2097.080.004

Plant: 209711100500

Material-assembly-group-no: 2097.111.005

	Pos.	Material number	Customer material	Name	Quantity	ME	Amend. no.	Techn. Info.	Rep kit	Alternative material
	20	0631.313.098		CYLINDRICAL PIN	2			12X24		
	160	2097.211.029		AXLE FLARED TUBE	2		Z00023971510			
	/10	2097.311.028		PLANETARY GEAR	3			Z=56		
	/100	0635.371.035		TAPERED ROLLER BEARING	1			95X170X34,5		
	/110	0750.117.408		TAPERED ROLLER BEARING	1			114,300X177,800X41,275		
	/120	2097.211.028		REAR AXLE SHAFT	1			Z=40		
	//20	2093.311.004		WHEEL STUD	10			M22X1,5X101,5		
	//30	0637.100.480		SLOTTED NUT	1			M95X1,5		
	/130	0501.326.253		SHAFT SEAL	1			133,35X183,0X15,0		
	/140	2097.311.027		AXLE FLARED TUBE	1					
	/150	5840.303.121		SCREW PLUG	2					
	/160	5840.303.410		SCREW PLUG	1					
	/170	2097.311.029		RING GEAR	1			Z=129		
	/20	0735.300.350		CYLINDER ROLLER BEARING	3			65,000X93,100X55,000		
	/30	0630.513.221		SNAP RING	6					
	/40	0730.300.367		THRUST WASHER	6			A=2,70		
	/50	0630.501.044		RETAINING RING	3			65X2,5		
	/60	2097.311.023		PLANET CARRIER	1			Z=40		
	/70	0631.611.060		SET SCREW	1			M10X16		
	/80	0635.460.021		BALL	1			10		
	/90	0631.329.322		SPRING PIN	1			8X90		
	200	0636.102.960		HEXAGON SCREW	38			M12X150		
	210	0636.102.622		STUD	6			M12X150		
	220	0637.100.427		HEXAGON NUT	6			M12		

# Plant

Page 1 from 1

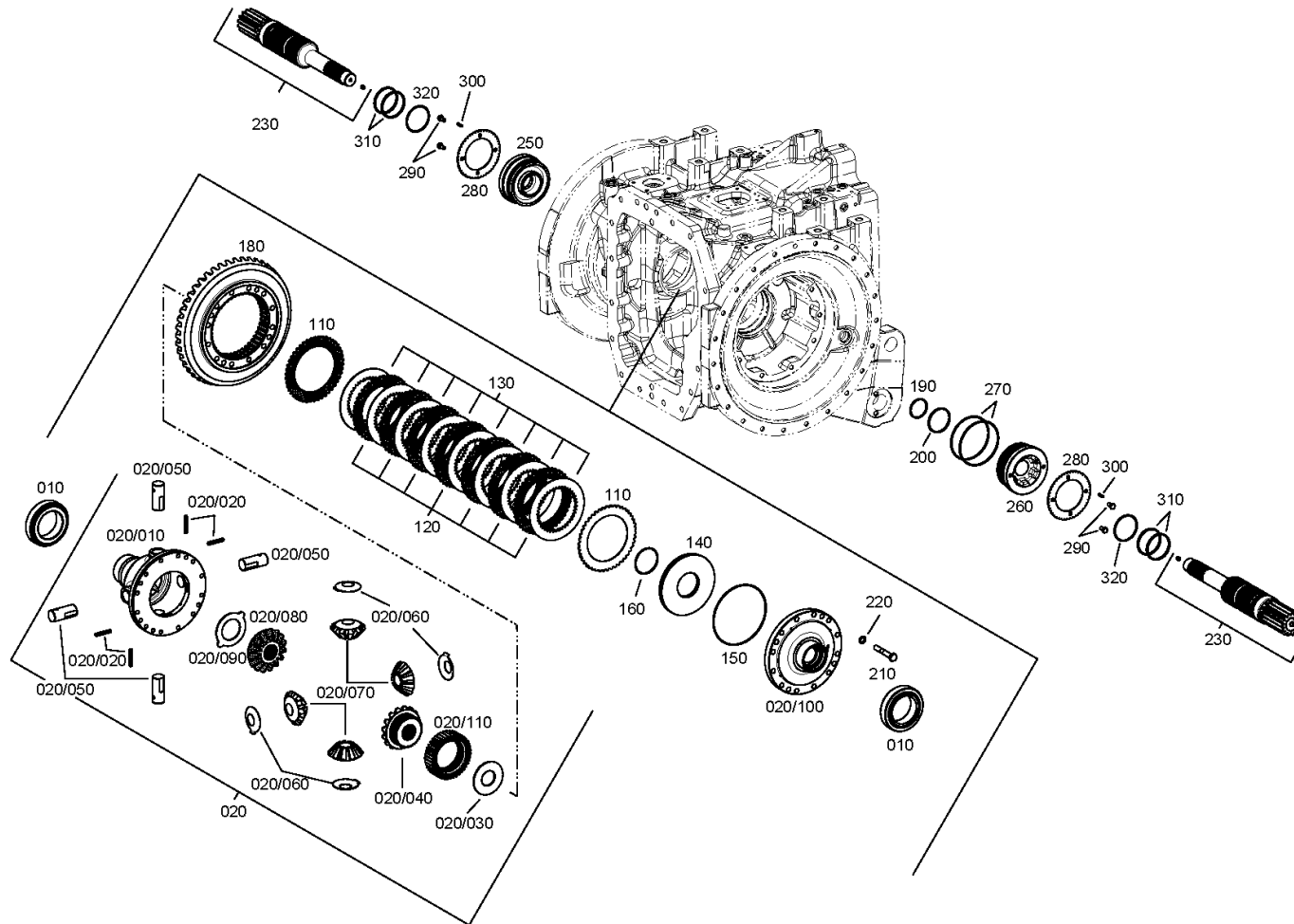
Material number: 2097.080.004

Plant: 209410900500

Material-assembly-group-no: 2094.109.005



T 7334 /  
DIFFERENTIAL



# Parts list

Page 1 from 1



T 7334 /

Material number: 2097.080.004

Plant: 209410900500

Material-assembly-group-no: 2094.109.005

	Pos.	Material number	Customer material	Name	Quantity	ME	Amend. no.	Techn. Info.	Rep kit	Alternative material
	10	0750.117.075		TAPER ROLLER BEARING	2			80,000X125,000X29,000		
	20	2099.209.013		DIFFERENTIAL	1		Z00033314310			
	/10	2097.309.078		DIFF.HOUSING	1					
	/100	2099.309.018		DIFFERENTIAL HOUSING	1					
	/110	2097.309.087		SLEEVE	1		Z00035048710	Z=40*Z=41		
	/20	0631.100.223		SPRING PIN	4			10X50		
	/30	0730.300.714		THRUST WASHER	1			42,200X95,000X3,000		
	/40	2099.309.017		AXLE BEVEL GEAR	1			Z=16*Z=40*Z=32		
	/50	2099.309.016		DIFFERENTIAL AXLE	4					
	/60	0730.300.224		THRUST WASHER	4			32,3x70x1,5		
	/70	4061.316.169		DIFFERENTIAL BEVEL GEAR	4			Z=11		
	/80	2097.309.061		AXLE BEVEL GEAR	1			Z=16*Z=32		
	/90	0501.334.934		THRUST WASHER	1					
	110	0501.332.242		OUTER CLUTCH DISK	2		Z00034822010	Z=46/Ø=189.2		
	120	0501.332.241		OUTER CLUTCH DISK	7		Z00034822010	Z=46/Ø=189.2		
	130	0501.324.834		INNER CLUTCH DISK	8			Z=41		
	140	2097.309.020		PISTON	1					
	150	0634.304.754		O-RING	1			165X3		
	160	0634.306.285		O-RING	1			69X3		
	180	2094.309.025		CROWN WHEEL	1			z=47 / i=3.6154		
	190	0501.323.875		RECTANGULAR RING	1					
	200	0501.323.876		RECTANGULAR RING	1					
	210	0636.011.434		HEXAGON SCREW	16			M12X80		
	220	0630.003.050		WASHER	16					
	230	2097.209.068		SUN GEAR SHAFT	2		Z00034134510	Z=32*Z=36*Z=15*Z=36		
	250	2093.309.087		ADJUSTMENT PLATE	1					
	260	2093.309.088		ADJUSTMENT PLATE	1					
	270	0634.304.195		O-RING	2			117,07X3,53		
	280	5838.300.207		LOCKING PLATE	2					
	290	0636.100.622		HEXAGON SCREW	4			M8X16		
	300	0631.329.048		SPRING PIN	2			5X20		
	310	0634.402.147		R-RING	4			75X3,5		
	320	0634.313.320		O-RING	2			67X3		



# Plant

Page 1 from 2

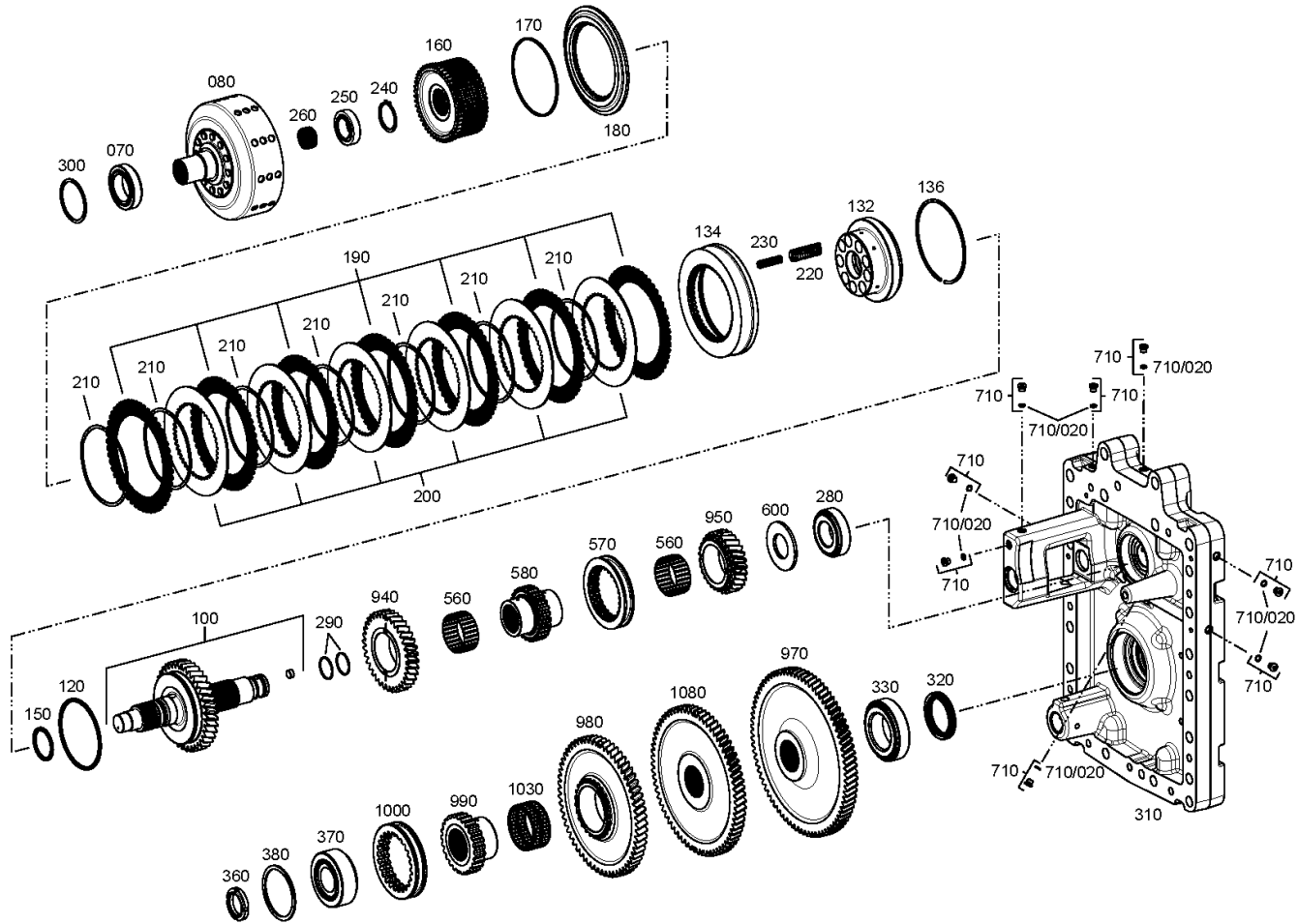
Material number: 2097.080.004

Plant: 209411002301

Material-assembly-group-no: 2094.110.023



T 7334 /  
P.T.O. SHAFT



# Plant

Page 2 from 2

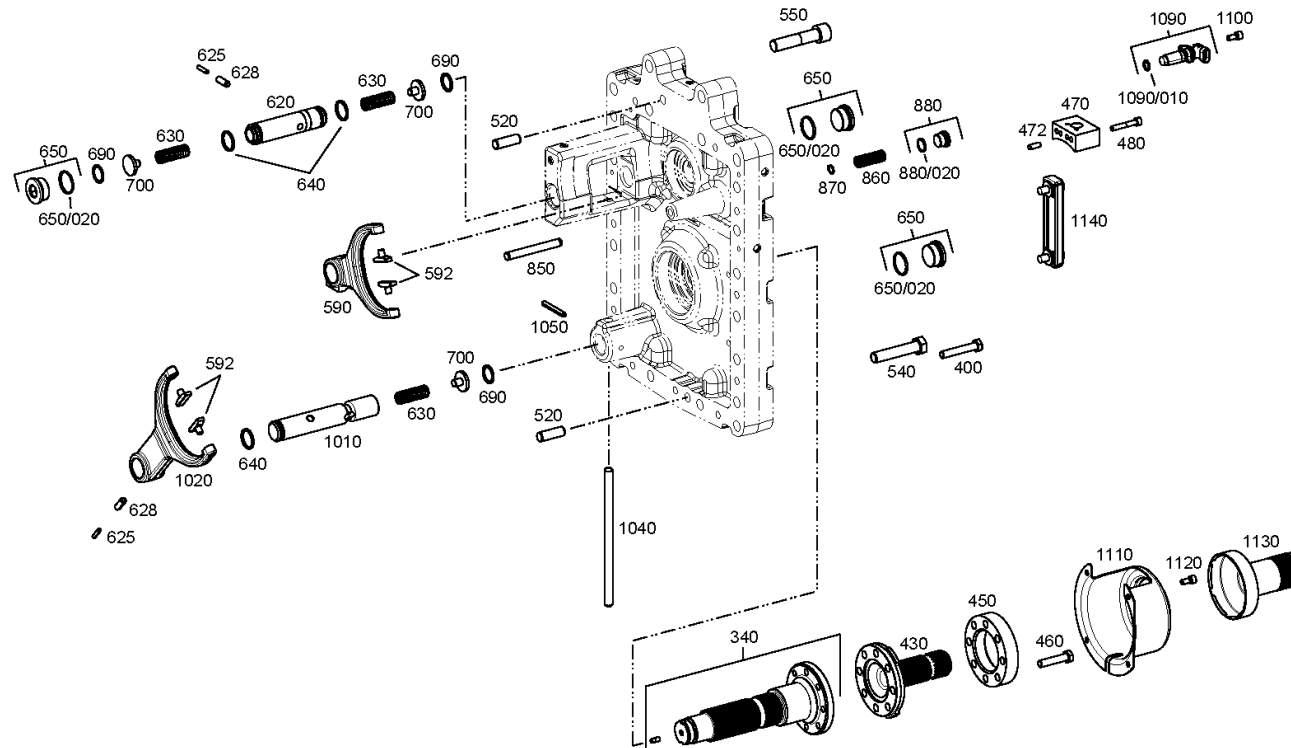
Material number: 2097.080.004

Plant: 209411002302

Material-assembly-group-no: 2094.110.023



T 7334 /  
P.T.O. SHAFT



# Parts list

Page 1 from 6



T 7334 /

Material number: 2097.080.004

Plant: 209411002301

Material-assembly-group-no: 2094.110.023

	Pos.	Material number	Customer material	Name	Quantity	ME	Amend. no.	Techn. Info.	Rep kit	Alternative material
🛒	70	0750.117.002		TAPERED ROLLER BEARING	1			50,000X80,000X20,000		
🛒	80	2094.210.023		CLUTCH BELL HOUSING	1					
	100	2097.310.007		CLUTCH SHAFT				Z=37*Z=38*Z=38		2097.298.060
🛒	120	0734.307.168		LIPPED SEAL RING	1			ENTHALT.IN 0734 307 196(1)		
🛒	132	2094.310.062		PISTON	1					
🛒	134	2094.310.089		PRESSURE PLATE	1			Z=48		
🛒	136	0630.513.122		SNAP RING	1					
🛒	150	0734.307.235		LIPPED SEAL RING	1			ENTHALT.IN 0734 307 196(1)		
🛒	160	2094.310.061		DISC CARRIER	1			Z=48		
	170	---		WASHER	1					
🛒	---	0730.301.766		WASHER	1			H=2,000		
🛒	---	0730.301.767		WASHER	1			H=2,100		
🛒	---	0730.301.768		WASHER	1			H=2,200		
🛒	---	0730.008.585		WASHER	1			H=2,300		
🛒	---	0730.008.586		WASHER	1			H=2,400		
🛒	---	0730.008.587		WASHER	1			H=2,500		
🛒	---	0730.006.671		WASHER	1			H=2,600		
🛒	---	0730.006.672		WASHER	1			H=2,700		
🛒	---	0730.006.673		WASHER	1			H=2,800		
🛒	---	0730.006.674		WASHER	1			H=2,900		
🛒	---	0730.006.675		WASHER	1			H=3,000		
🛒	---	0730.006.676		WASHER	1			H=3,100		
🛒	---	0730.006.677		WASHER	1			H=3,200		
🛒	---	0730.006.678		WASHER	1			H=3,300		
🛒	---	0730.006.679		WASHER	1			H=3,400		
🛒	---	0730.006.680		WASHER	1			H=3,500		
🛒	---	0730.006.681		WASHER	1			H=3,600		
🛒	---	0730.006.682		WASHER	1			H=3,700		
🛒	---	0730.006.683		WASHER	1			H=3,800		
🛒	---	0730.006.684		WASHER	1			H=3,900		
🛒	---	0730.006.685		WASHER	1			H=4,000		
🛒	---	0730.006.686		WASHER	1			H=4,100		
🛒	---	0730.006.687		WASHER	1			H=4,200		
🛒	---	0730.006.688		WASHER	1			H=4,300		

# Parts list

Page 2 from 6



T 7334 /

Material number: 2097.080.004

Plant: 209411002301

Material-assembly-group-no: 2094.110.023

	Pos.	Material number	Customer material	Name	Quantity	ME	Amend. no.	Techn. Info.	Rep kit	Alternative material
🛒	---	0730.006.689		WASHER	1			H=4,400		
🛒	---	0730.006.690		WASHER	1			H=4,500		
🛒	---	0730.006.691		WASHER	1			H=4,600		
🛒	---	0730.006.692		WASHER	1			H=4,700		
🛒	---	0730.006.693		WASHER	1			H=4,800		
🛒	---	0730.006.694		WASHER	1			H=4,900		
🛒	---	0730.006.695		WASHER	1			H=5,000		
🛒	---	0730.007.694		WASHER	1			H=5,100		
🛒	---	0730.007.695		WASHER	1			H=5,200		
🛒	---	0730.007.696		WASHER	1			H=5,300		
🛒	---	0730.007.798		WASHER	1			H=5,400		
🛒	---	0730.007.799		WASHER	1			H=5,500		
🛒	---	0730.007.800		WASHER	1			H=5,600		
🛒	180	2094.310.059		END SHIM	1			Z=48		
🛒	190	0501.216.044		OUTER CLUTCH DISK	7			h=1,50;z=50		
🛒	200	2093.313.060		INNER CLUTCH DISK	6					
🛒	210	0501.325.499		WAVE SPRING	7			137,000X146,800X1,000		
🛒	220	0732.042.773		COMPRESSION SPRING	9					
🛒	230	0732.042.686		COMPRESSION SPRING	9					
🛒	240	0630.531.061		RETAINING RING	1			48X2,5		
🛒	250	0750.117.503		TAPER ROLLER BEARING	1			35,000X62,000X18,000		
🛒	260	0750.115.380		NEEDLE CAGE	1			32,0X37,0X17,0		
🛒	280	0750.117.443		TAPERED ROLLER BEARING	1			45,000X85,000X24,750		
🛒	290	0634.402.541		R-RING	2			40X2		
🛒	300	---		SHIM	1					
🛒	---	0730.005.332		SHIM	1					
🛒	---	0730.005.333		SHIM	1					
🛒	---	0730.005.414		SHIM	1					
🛒	---	0730.005.415		SHIM	1					
🛒	---	0730.005.416		SHIM	1					
🛒	---	0730.005.417		SHIM	1					
🛒	---	0730.007.413		SHIM	1					
🛒	---	0730.004.785		SHIM	1			H=1,90 IN 0730 004 595(0)		
🛒	---	0730.004.786		SHIM	1			H=1,95 IN 0730 004 595(0)		

# Parts list

Page 3 from 6



T 7334 /

Material number: 2097.080.004

Plant: 209411002301

Material-assembly-group-no: 2094.110.023

	Pos.	Material number	Customer material	Name	Quantity	ME	Amend. no.	Techn. Info.	Rep kit	Alternative material
🛒	---	0730.001.799		SHIM	1			H=2,00 IN 0730 004 595(0)		
🛒	---	0730.003.414		SHIM	1			H=2,05 IN 0730 004 595(0)		
🛒	---	0730.001.798		SHIM	1			H=2,10 IN 0730 004 595(0)		
🛒	---	0730.003.415		SHIM	1			H=2,15 IN 0730 004 595(0)		
🛒	---	0730.001.797		SHIM	1			H=2,20 IN 0730 004 595(0)		
🛒	---	0730.003.416		SHIM	1			H=2,25 IN 0730 004 595(0)		
🛒	---	0730.001.796		SHIM	1			H=2,30 IN 0730 004 595(0)		
🛒	---	0730.003.417		SHIM	1			H=2,35 IN 0730 004 595(0)		
🛒	---	0730.001.795		SHIM	1			H=2,40 IN 0730 004 595(0)		
🛒	---	0730.004.787		SHIM	1			H=2,45 IN 0730 004 595(0)		
🛒	---	0730.004.788		SHIM	1			H=2,50 IN 0730 004 595(0)		
🛒	---	0730.007.414		SHIM	1			S=1,55		
🛒	---	0730.001.919		SHIM	1			h=1,30		
🛒	---	0730.004.892		SHIM	1			h=1,35		
🛒	---	0730.001.918		SHIM	1			h=1,40		
🛒	---	0730.001.617		SHIM	1			h=1,50		
🛒	310	2097.310.025		COVER	1					
🛒	320	0734.309.058		SHAFT SEAL	1			65,0X85,0X10,0		
🛒	330	0735.301.801		TAPER ROLLER BEARING	1			65,000X110,000X28,000		
🛒	340	2097.310.010		P.T.O. SHAFT				Z=42		2097.298.059
🛒	360	0737.502.188		SLOTTED NUT	1			M42X1,5		
🛒	370	0750.117.524		TAPERED ROLLER BEARING	1			45,000X100,000X38,250		
🛒	380	---		SHIM	1					
🛒	---	0730.102.100		SHIM	1					
🛒	---	0730.102.102		SHIM	1					
🛒	---	0730.102.700		SHIM	1			87X99,8X1,8		
🛒	---	0730.102.074		SHIM	1			A=1,90		
🛒	---	0730.102.071		SHIM	1			A=2,05		
🛒	---	0730.102.070		SHIM	1			A=2,10		
🛒	---	0730.102.069		SHIM	1			A=2,15		
🛒	---	0730.102.068		SHIM	1			A=2,20		
🛒	---	0730.102.067		SHIM	1			A=2,25		
🛒	---	0730.102.066		SHIM	1			A=2,30		
🛒	---	0730.102.065		SHIM	1			A=2,35		

# Parts list

Page 4 from 6



T 7334 /

Material number: 2097.080.004

Plant: 209411002301

Material-assembly-group-no: 2094.110.023

	Pos.	Material number	Customer material	Name	Quantity	ME	Amend. no.	Techn. Info.	Rep kit	Alternative material
	---	0730.102.064		SHIM	1			A=2,40		
	---	0730.102.063		SHIM	1			A=2,45		
	---	0730.102.062		SHIM	1			A=2,50		
	---	0730.102.061		SHIM	1			A=2,55		
	---	0730.102.060		SHIM	1			A=2,60		
	---	0730.102.106		SHIM	1			A=2,65		
	---	0730.102.105		SHIM	1			A=2,70		
	---	0730.102.104		SHIM	1			A=2,75		
	---	0730.102.103		SHIM	1			A=2,80		
	---	0730.102.098		SHIM	1			A=3,05		
	---	0730.103.114		SHIM	1			A=3,10		
	---	0730.103.115		SHIM	1			A=3,15		
	---	0730.102.075		SHIM	1			h=1,85		
	---	0730.102.073		SHIM	1			h=1,95		
	---	0730.102.072		SHIM	1			h=2,00		
	---	0730.102.101		SHIM	1			h=2,90		
	---	0730.102.099		SHIM	1			h=3,00		
	400	0636.011.033		HEXAGON SCREW	11			M12X70		
	430	2094.310.139		P.T.O. SHAFT	1		Z00054562914	Z=20		
	450	2097.310.023		FLANGE	1					
	460	0636.102.759		HEXAGON SCREW	8			M12X55		
	470	2094.310.107		CONSOLE	1					
	472	0631.302.070		CYLINDRICAL PIN	2			8X20		
	480	0636.101.036		CAP SCREW	2			M8X50		
	520	0631.306.621		CYLINDRICAL PIN	2			16X45		
	540	0636.011.316		HEXAGON SCREW	2			M18X90		
	550	0636.115.189		CAP SCREW	2		Z00045192410	M20X1,5X90		
	560	0750.115.359		NEEDLE CAGE	2			K 65X70X30 HA		
	570	2094.310.110		SLIDING SLEEVE	1			Z=27		
	580	2094.310.103		SLEEVE CARRIER	1			Z=27*Z=38		
	590	2097.310.011		GEAR SHIFT FORK	1					
	592	1249.306.121		SLIDING PAD	4					
	600	0730.112.902		THRUST WASHER	1			88X45X5		
	620	2094.310.106		PISTON	1					

# Parts list

Page 5 from 6



T 7334 /

Material number: 2097.080.004

Plant: 209411002301

Material-assembly-group-no: 2094.110.023

	Pos.	Material number	Customer material	Name	Quantity	ME	Amend. no.	Techn. Info.	Rep kit	Alternative material
	625	0631.329.068		SPRING PIN	2			6X28		
	628	0631.329.163		SPRING PIN	2			10X28		
	630	0732.042.773		COMPRESSION SPRING	3					
	640	0634.306.227		O-RING	3			29X3		
	650	4475.280.204		SCREW PLUG	3					
	/20	0634.314.304		O-RING	1			35X2		
	690	---		SPACER WASHER	3					
	---	0730.001.928		SHIM	1			25,020X31,900X1,800		
	---	0730.004.673		SHIM	1			S=0,300		
	---	0730.002.567		SHIM	1			S=0,400		
	---	0730.004.672		SHIM	1			S=0,500		
	---	0730.002.566		SHIM	1			S=0,600		
	---	0730.002.565		SHIM	1			S=0,800		
	---	0730.002.564		SHIM	1			S=1,00		
	---	0730.001.934		SHIM	1			S=1,200		
	---	0730.001.933		SHIM	1			S=1,300		
	---	0730.001.932		SHIM	1			S=1,400		
	---	0730.001.931		SHIM	1			S=1,500		
	---	0730.001.930		SHIM	1			S=1,600		
	---	0730.001.929		SHIM	1			S=1,700		
	700	2094.310.111		SPRING GUIDE	3					
	710	4475.280.197		SCREW PLUG	8			M10X1 KPL.MIT O-RING		
	/20	0634.303.280		O-RING	1			8X1,5		
	850	2094.310.090		PIN	1					
	860	0732.041.102		COMPRESSION SPRING	1					
	870	0630.501.009		RETAINING RING	1			13X1		
	880	4475.280.211		SCREW PLUG	1					
	/20	0634.304.287		O-RING	1			19X2		
	940	2099.310.014		SPUR GEAR	1			Z=27*Z=35		
	950	2094.310.101		SPUR GEAR	1			Z=27		
	970	2094.310.104		SPUR GEAR	1			Z=79		
	980	2099.310.015		SPUR GEAR	1			Z=25*Z=61		
	990	2097.310.008		SLEEVE CARRIER	1			Z=25		
	1000	2097.310.013		SLIDING SLEEVE	1			z=25		

# Parts list

Page 6 from 6



T 7334 /

Material number: 2097.080.004

Plant: 209411002301

Material-assembly-group-no: 2094.110.023

	Pos.	Material number	Customer material	Name	Quantity	ME	Amend. no.	Techn. Info.	Rep kit	Alternative material
🛒	1010	2097.310.014		PISTON	1					
🛒	1020	2097.310.012		GEAR SHIFT FORK	1					
🛒	1030	0735.320.500		NEEDLE CAGE	1			75,0X83,0X35,0		
🛒	1040	2097.310.015		LOCK	1					
🛒	1050	0631.328.621		SLOTTED PIN	1			8X65		
🛒	1080	2097.310.017		SPUR GEAR	1			Z=68		
🛒	1090	0501.317.943		SPEED SENSOR	1					
🛒	/10	0634.313.728		O-RING	1			15,54X2,62		
🛒	1100	0636.100.599		CAP SCREW	1			M8X18		
🛒	1110	2097.310.021		COVER	1					
🛒	1120	0636.100.599		CAP SCREW	4			M8X18		
🛒	1130	5838.300.349		PROTECTION CAP	1					
🛒	1140	0501.330.767		OIL SIGHT GLASS	1					
🛒	340	2097.298.059		P.T.O. SHAFT	1					
🛒	100	2097.298.060		CLUTCH SHAFT	1					



# Plant

Page 1 from 1

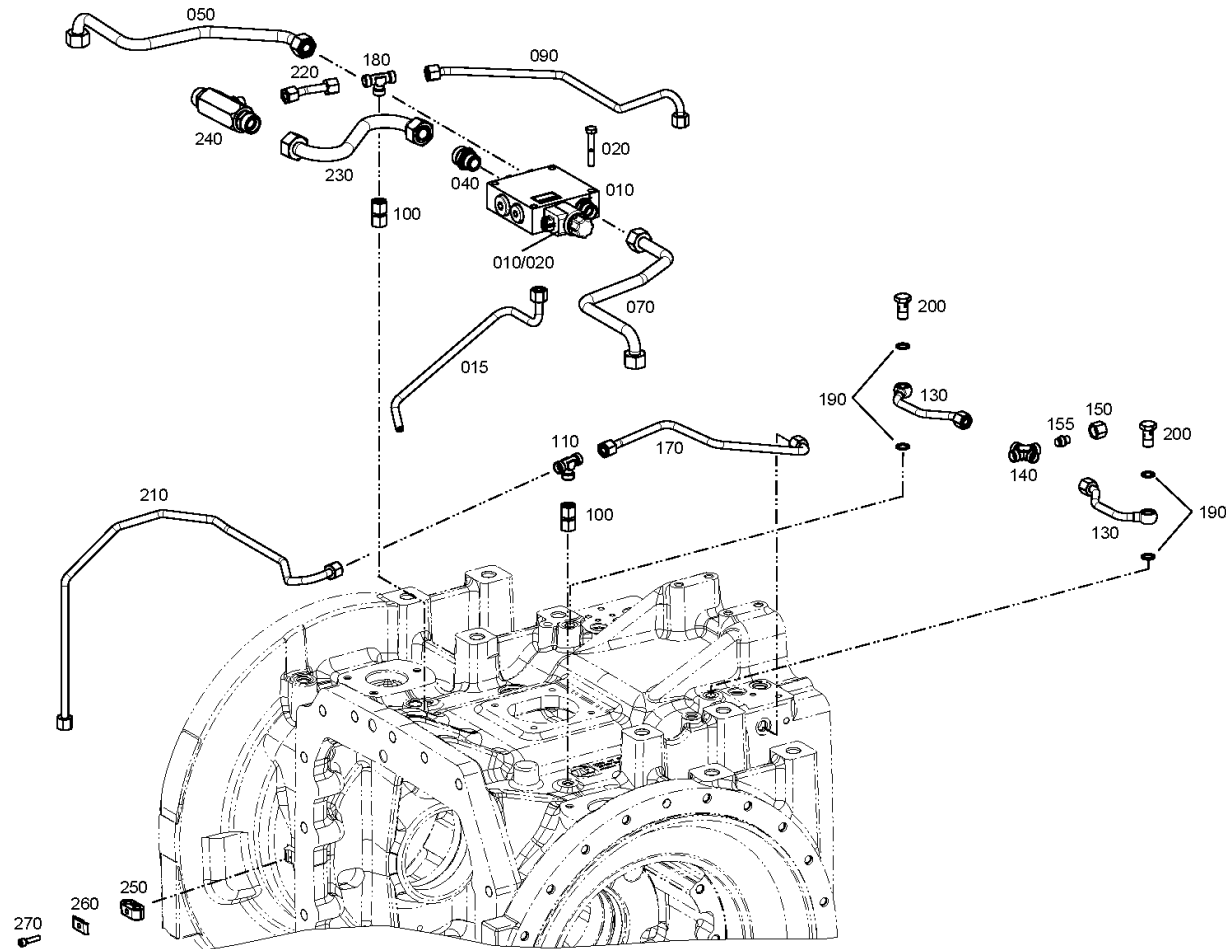
Material number: 2097.080.004

Plant: 209714701300

Material-assembly-group-no: 2097.147.013



T 7334 /  
OIL SUPPLY



# Parts list

Page 1 from 1



T 7334 /

Material number: 2097.080.004

Plant: 209714701300

Material-assembly-group-no: 2097.147.013

	Pos.	Material number	Customer material	Name	Quantity	ME	Amend. no.	Techn. Info.	Rep kit	Alternative material
	10	0501.220.566		VALVE BLOCK	1					
	/20	0501.324.633		COIL	1					
	15	2093.247.080		TUBE	1			10,000X1,000		
	20	0636.010.089		HEXAGON SCREW	4			M8X50		
	40	0637.100.033		SCREW-IN SLEEVE	1					
	50	2099.247.038		TUBE	1					
	70	2099.247.011		TUBE	1					
	90	2097.247.025		TUBE	1			10,000X1,000		
	100	2097.247.016		TUBE	2					
	110	0637.101.170		T-ADAPTER	1					
	130	2097.247.010		TUBE	2			ROHR 10,000X1,000		
	140	0637.847.600		CROSS ADAPTER	1					
	150	0637.100.271		UNION NUT	1					
	155	0637.100.650		LOCKING CONE	1					
	170	2097.247.024		TUBE	1			10,000X1,000		
	180	0637.101.170		T-ADAPTER	1					
	190	0634.801.038		SEALING RING	4			14X18		
	200	0637.100.521		UNION SCREW	2					
	210	2097.247.019		TUBE	1			10,000X1,000		
	220	2097.247.023		TUBE	1			10,000X1,000		
	230	2097.247.021		TUBE	1			18,000X1,500		
	240	0501.331.384		CHECK VALVE	1					
	250	0632.100.001		PIPE CLAMP	1					
	260	0632.100.002		COVER PLATE	1					
	270	0636.101.015		CAP SCREW	1			M6X25		

# Plant

Page 1 from 1

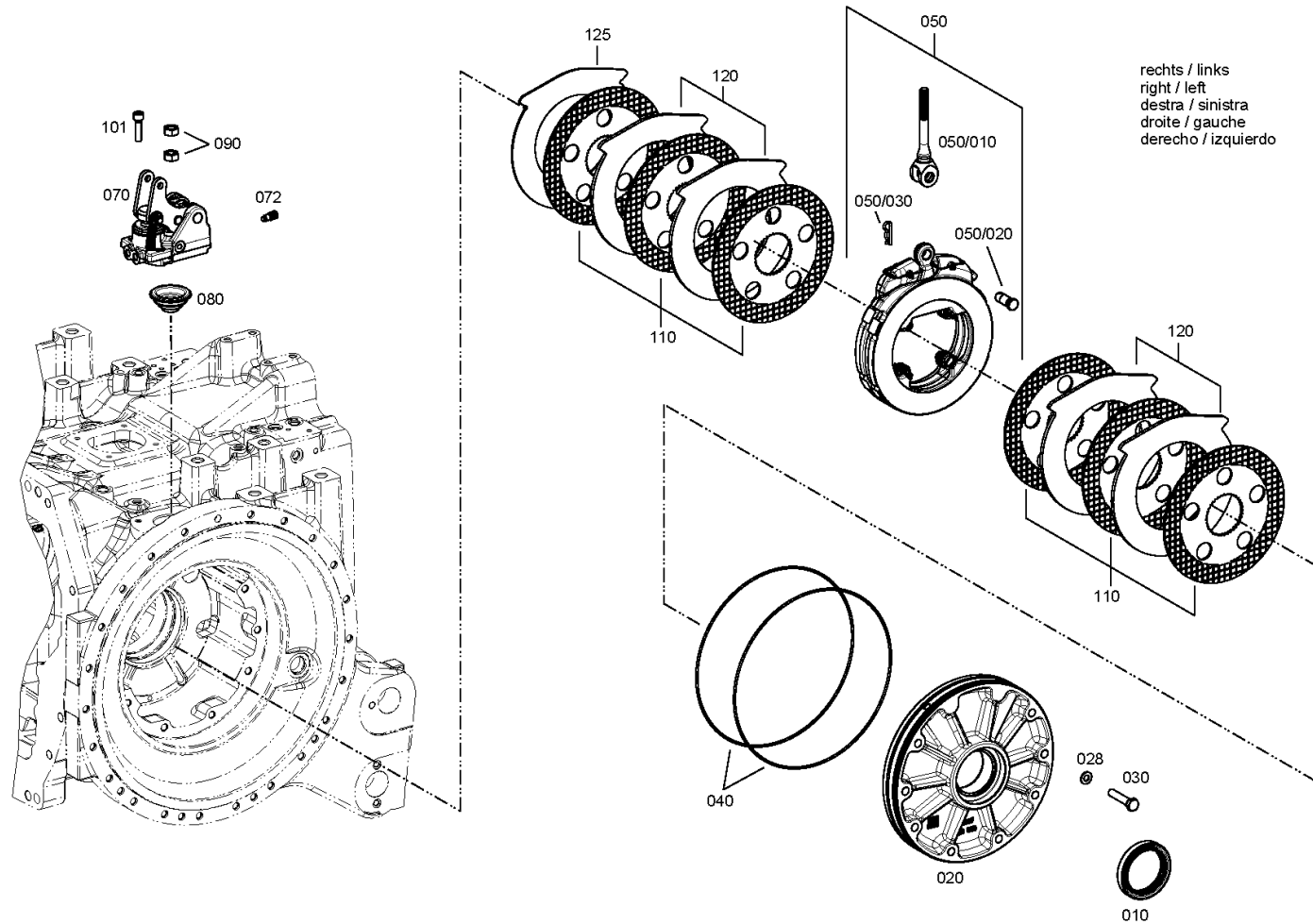
Material number: 2097.080.004

Plant: 209912400500

Material-assembly-group-no: 2099.124.005



T 7334 /  
BRAKE



# Parts list

Page 1 from 1



T 7334 /

Material number: 2097.080.004

Plant: 209912400500

Material-assembly-group-no: 2099.124.005

	Pos.	Material number	Customer material	Name	Quantity	ME	Amend. no.	Techn. Info.	Rep kit	Alternative material
	10	0734.309.249		SHAFT SEAL	2			75,0X100,0X15,0		
	20	2097.324.009		BRAKE PLATE	2					
	28	0630.003.050		WASHER	4					
	30	0636.100.428		HEXAGON SCREW	16		Z00034688710	M12X60		
	40	5838.300.505		SEALING RING	4					
	50	0501.222.459		BRAKE	2					
	/10	0501.333.929		TENSION ROD	1					
	/20	0501.333.819		PIN	1					
	/30	0501.333.820		SECURING CLIP	1					
	70	0501.223.790		ACTUATION	2		Z00042985310	32 mm		
	72	0501.209.288		BREATHER	2					
	80	0501.331.300		RUBBER SOCKET	2					
	90	0637.100.243		HEXAGON NUT	4			M14X1,5		
	101	0636.101.055		CAP SCREW	6			M10X40		
	110	0501.335.722		LINED CLUTCH DISK	12		Z00036520410	Z=36		
	120	0501.335.237		DISC	8		Z00037721510	6,5 MM		
	125	0501.324.155		DISC	2					

# Plant

Page 1 from 1

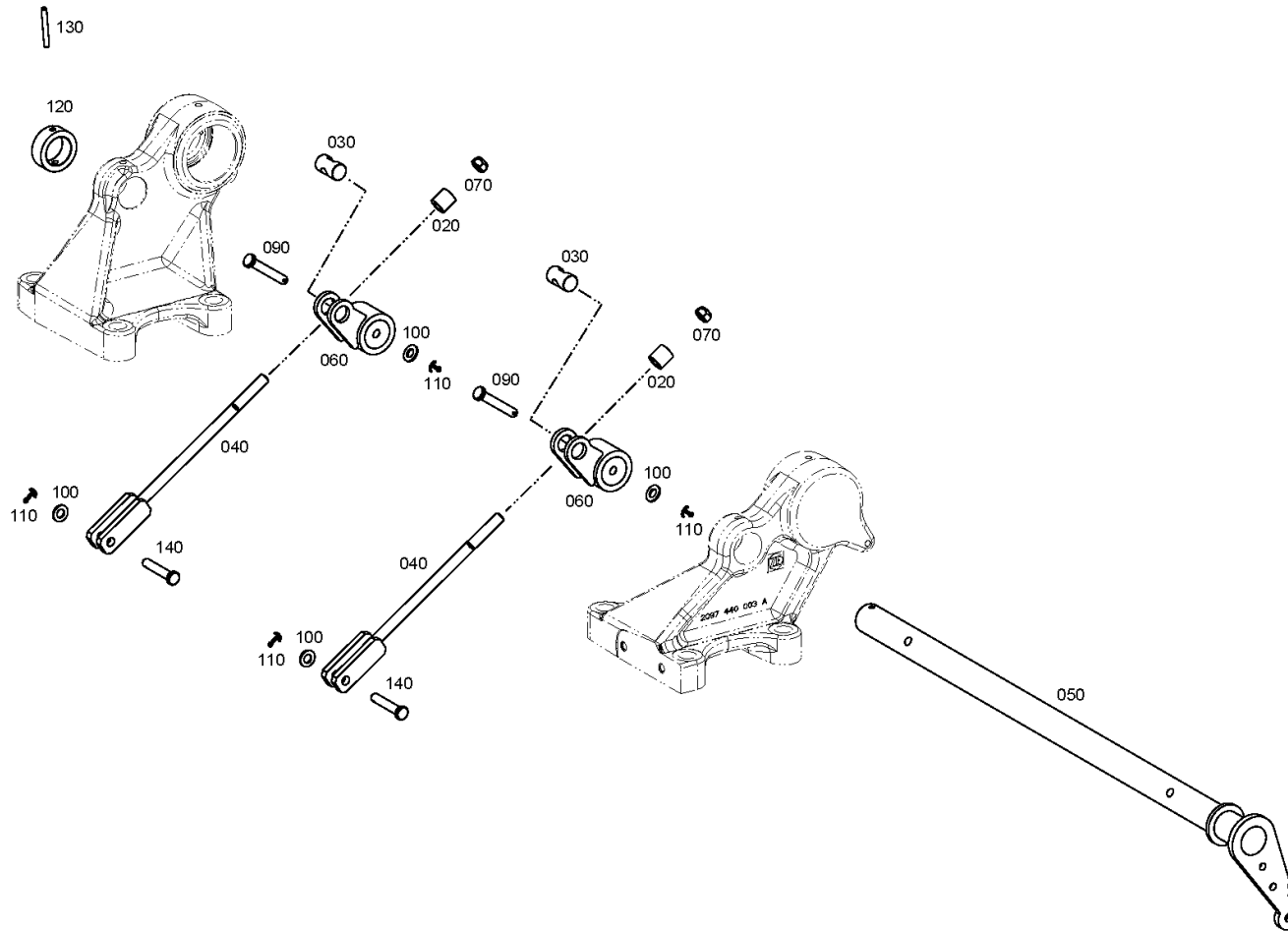
Material number: 2097.080.004

Plant: 209912900200

Material-assembly-group-no: 2099.129.002



T 7334 /  
BRAKE SHAFT



# Parts list

Page 1 from 1



T 7334 /

Material number: 2097.080.004

Plant: 209912900200

Material-assembly-group-no: 2099.129.002

	Pos.	Material number	Customer material	Name	Quantity	ME	Amend. no.	Techn. Info.	Rep kit	Alternative material
🛒	20	2093.329.001		TUBE	2					
🛒	30	2093.329.002		PIN	2					
🛒	40	2097.329.018		TENSION ROD	2		Z00033144510			
🛒	50	2099.329.006		BRAKE SHAFT	1					
🛒	60	2097.329.009		BRAKE LEVER	2					
🛒	70	0637.101.503		HEXAGON NUT	2		Z00040315610	M12		
🛒	90	2097.329.015		PIN	2					
🛒	100	0630.001.014		WASHER	4					
🛒	110	0631.701.029		COTTER PIN	4		Z00038787310	3,2X28		
🛒	120	2095.329.004		RING	1					
🛒	130	0631.329.074		SPRING PIN	1			6X50		
🛒	140	2099.329.008		PIN	2					

# Plant

Page 1 from 1

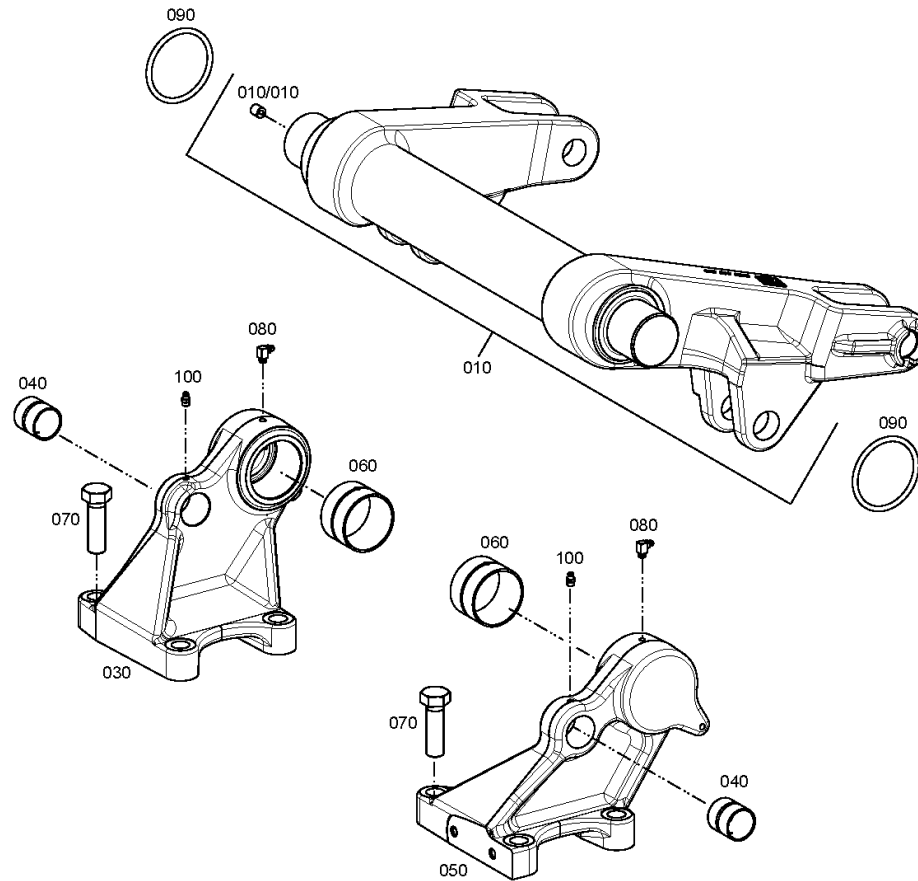
Material number: 2097.080.004

Plant: 209714000300

Material-assembly-group-no: 2097.140.003



T 7334 /  
HOISTING UNIT



# Parts list

Page 1 from 1

Material number: 2097.080.004

Plant: 209714000300

Material-assembly-group-no: 2097.140.003



T 7334 /

	Pos.	Material number	Customer material	Name	Quantity	ME	Amend. no.	Techn. Info.	Rep kit	Alternative material
🛒	10	2093.240.001		LIFTING SHAFT	1					
🛒	/10	2095.340.002		BUSH	1					
🛒	30	2097.340.002		BRACKET	1					
🛒	40	0501.327.177		PLAIN BEARING	2		Z00007550210			
🛒	50	2097.340.003		BRACKET	1					
🛒	60	5838.300.323		BEARING BUSH	2			65,000X70,000X45,000		
🛒	70	0636.011.381		HEXAGON SCREW	8			M20X65		
🛒	80	0632.604.006		LUBRICATING NIPPLE	2					
🛒	90	5838.300.240		SEALING RING	2					
🛒	100	0632.100.124		LUBRICATING NIPPLE	2			M8X1		





<b>ZF Friedrichshafen AG</b>		Organisation: Division Industrietechnik				
Benennung:	<b>EINSTELLVORSCHRIFT DER BETRIEBSBREMSE</b>			Dokument Nr.:		
Zusatzbenennung:	<b>Traktorhinterachsen am Montageband E6; 15 Nm 2,00 U</b>			<b>2093.700.290</b>		
Schutzvermerk ISO 16016 beachten	a	06.12.2016	Langner		DIN A4	Seite 1 von 2
	Index	Datum	Name			
	<b>Ä N D E R U N G E N</b>					
Name:	Erstellt: Langner		Geprüft: Kierner		Freigegeben: Langner	
Abteilung:	IAGD6		IAPA72		IAGD6	
Datum:	15.05.2013		15.05.2013		15.05.2013	



<b>ZF Friedrichshafen AG</b>		Organization: Division Industrial Technology				
Description:	<b>ADJUSTING INSTRUCTIONS SERVICE BRAKE</b>			Document No.:		
Add. Description:	<b>Tractor rear axles assembly line E6; 15 Nm 2,00 rev.</b>			<b>2093.700.290</b>		
Refer to protection notice ISO 16016					DIN A4	Page of
	Index	Date	Name			
	<b>M O D I F I C A T I O N S</b>					
Name:	Created:		Checked:		Approved:	
Dept.:						
Date:						

**Englische Übersetzung nur zur Information  
Deutscher Text ist bindend**

**English translation for reference only  
German text certified**

**Inhalt:**

**Contents:**

- 1 Geltungs-/Anwendungsbereich
- 2 Zweck
- 3 Normative Verweisungen

- 1 Scope/Field of application
- 2 Object
- 3 Normative references

**1 Geltungs-/Anwendungsbereich**

Dieses Dokument zeigt den Prozess und die Einstellwerte für die Bremseneinstellung der Betriebsbremse bei Traktorhinterachsen am Montageband E6 auf.

**1 Scope/Field of application**

This document shows the proceeding and the values for the adjustment of the service brakes at tractor rear axles in the assembly line E6

**2 Zweck**

Diese Vorschrift regelt die Bremseneinstellung und dient zur Qualitätssicherung

**2 Object**

This document controls the brake adjustment and ensures the quality

**3 Normative Verweisungen**

**3 Normative references**

#### 4 Vorgehensweise Bremseneinstellung / *Brake adjustment procedure:*

1. Einstellmutter anziehen mit  $30 \text{ Nm} \pm 10 \%$   
*Screw adjustment nut with  $30 \text{ Nm} \pm 10 \%$*
2. Einstellmutter komplett lösen  
*Release adjustment nut completely*
3. Einstellmutter anziehen mit  $15 \text{ Nm} \pm 10 \%$   
*Screw adjustment nut with  $15 \text{ Nm} \pm 10 \%$*
4. Einstellmutter **2,00 Umdrehungen**  $\pm 2 \%$  lösen  
*Release adjustment nut **2,00 revolutions**  $\pm 2\%$*
5. Einstellmutter stellungsgebunden mittels Kontermutter mit  $80 \text{ Nm} \pm 10 \%$  fixieren – **SR-Merkmal nach VA 04027009**  
*Fix position of the adjustment nut with conternut screwed with a torque of  $80 \text{ Nm} \pm 10 \%$  - **Safety relevant according VA 04027009***

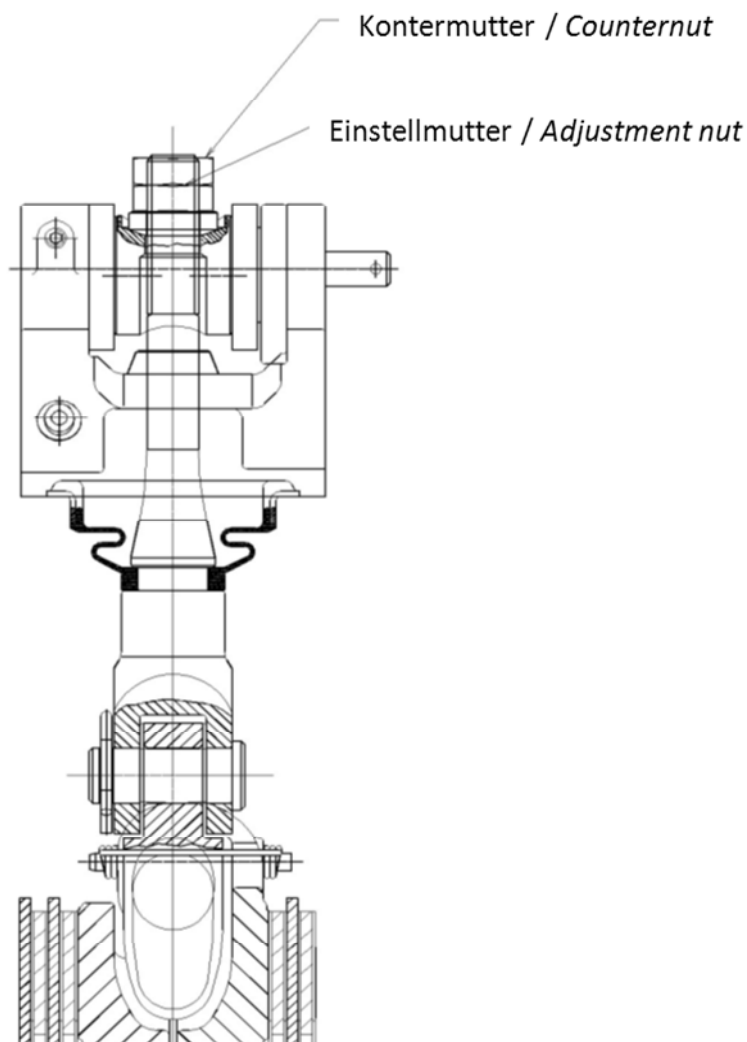


Bild 1: Schematische Darstellung Bremse  
Figure 1: Schematic overview brake

ZF Friedrichshafen AG		Organisation:		Division Industrietechnik		
Benennung:	EINSTELLVORSCHRIFT DER BETRIEBSBREMSE			Dokument Nr.:		
Zusatzbenennung:	Traktorhinterachsen am Montageband E6; 15 Nm 2,00 U			2093.700.290		
Schutzvermerk ISO 16016 beachten	a1	2018-05-29	Eder		DIN A4	Seite 1 von 2
	Index	Datum	Name			
	<b>ÄNDERUNGEN</b>					
Name:	Erstellt:		Geprüft:		Freigegeben:	
Abteilung:	编制: Langner		检查: Kierner		批准: Langner	
Datum:	部门: IAGD6		部门: IAPA72		部门: IAGD6	
	2013-05-15		2013-05-15		2013-05-15	

ZF Friedrichshafen AG		Organization:		Division Industrial Technology		
Description:	脚踏制动器的安装调试			Document No.:		
Add. Description:	拖拉机后桥装配线 E6; 15 牛顿米 2,00 转			2093.700.290		
Refer to protection notice ISO 16016					DIN A4	Page of
	Index	Date	Name			
	<b>MODIFICATIONS</b>					
Name:	Created:		Checked:		Approved:	
Dept.:						
Date:						

**Englische Übersetzung nur zur Information**  
Deutscher Text ist bindend

**English translation for reference only**  
German text certified

### Inhalt:

- 1 Geltungs-/Anwendungsbereich
- 2 Zweck
- 3 Normative Verweisungen

### 内容:

- 1 应用范围
- 2 用途
- 3 规范性参考文献

## 1 Geltungs-/Anwendungsbereich

Dieses Dokument zeigt den Prozess und die Einstellwerte für die Bremseneinstellung der Betriebsbremse bei Traktorhinterachsen am Montageband E6 auf.

## 1 应用范围

此文件阐述了在装配线 E6 上的拖拉机后桥脚踏制动器的调试程序和调试数值。

## 2 Zweck

Diese Vorschrift regelt die Bremseneinstellung und dient zur Qualitätssicherung

## 2 用途

为了确保制动器的安装质量, 该文件叙述了制动器的调试规定即调试过程和调试数值。

## 3 Normative Verweisungen

## 3 规范性参考文献

#### 4. Vorgehensweise Bremseneinstellung / 制动器调整规程

1. Einstellmutter anziehen mit  $30 \text{ Nm} \pm 10 \%$   
用  $30 \text{ Nm} \pm 10 \%$  的力矩上紧调整螺母
2. Einstellmutter komplett lösen  
然后完全松开调整螺母
3. Einstellmutter anziehen mit  $15 \text{ Nm} \pm 10 \%$   
再将调整螺母用  $15 \text{ Nm} \pm 10 \%$  上紧
4. Einstellmutter **2,00 Umdrehungen**  $\pm 2 \%$  lösen  
松开调整螺母并回转两圈  $\pm 2 \%$
5. Einstellmutter stellungsgebunden mittels Kontermutter mit  $80 \text{ Nm} \pm 10 \%$  fixieren – **SR-Merkmal nach VA 04027009**  
用  $80 \text{ Nm} \pm 10 \%$  的扭力上紧调整螺母上的锁紧螺母– 相关安全问题按照 **VA 04027009**

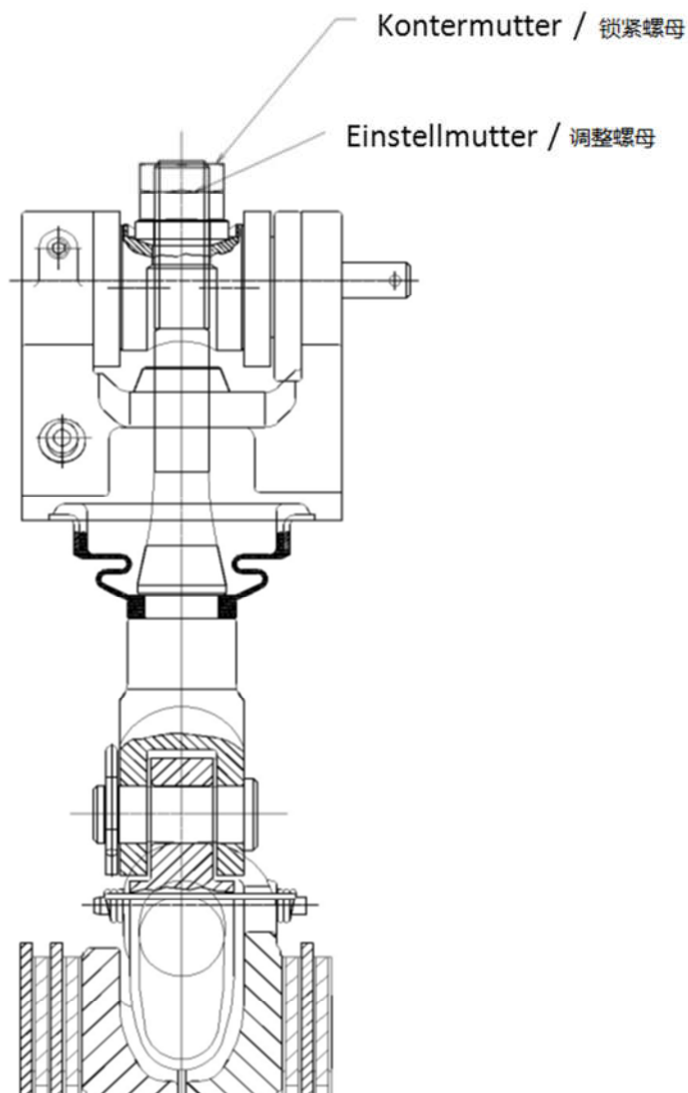


Bild 1: Schematische Darstellung Bremse  
示意图 1: 制动器概述